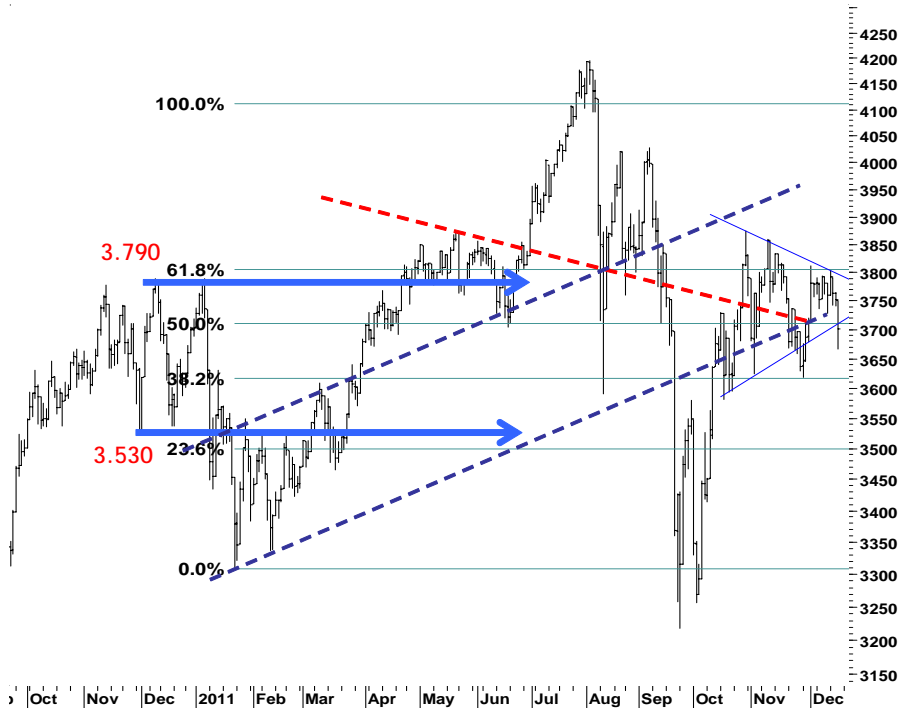


IHSG **3.701,5** **-50,1** **-1,33%**

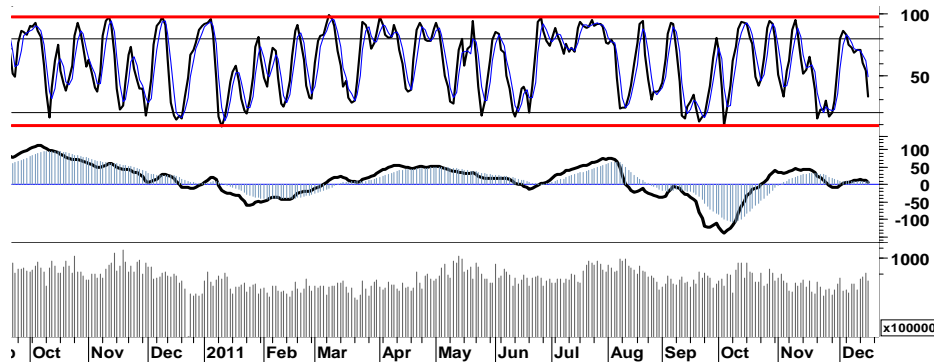
Ulasan Pasar



Masih cukup derasnya sentimen negatif seputar Krisis Utang di Uni Eropa para pelaku pasar serta merta merespon dengan melakukan aksi jual, yang mengakibatkan IHSG pada perdagangan kemarin mengalami tekanan sehingga terpuruk sedalam 50,1 poin dan ditutup di level 3.702. Mayoritas saham unggulan seperti ASII, BBKA, BBRI, ITMG dan UNTR terkoreksi cukup dalam, dengan rata-rata penurunan sebesar 3%. Perputaran saham yang terjadi pada perdagangan kemarin cukup ramai, dengan total kejadian tercatat kurang lebih 118kali. IHSG bergerak mengayun (swing) cukup lebar, sebesar 2% dengan menembus support basis 50% Fibonacci Retracement di level 3.705.

Minimnya sentimen positif di Eropa, aktifitas perdagangan di bursa-bursa utama negara tersebut cenderung datar dengan ditutup positif DAX 1,0%, 0,8%. Sementara data ekonomi yang positif mencoba mendorong pergerakan DJI, S&P500 dan Nasdaq menguat masing-masing sebesar 0,4%, 0,3% dan 0,1%.

Derasnya tekanan jual kemarin mengakibatkan IHSG menyentuh teritori negatif, serta terjadi penyempitan area pada bollinger band. Diharapkan sentimen positif domestik meningkatnya peringkat Indonesia ke dalam Investment Grade, mampu menahan laju tekanan jual dan melakukan technical rebound untuk kembali bergerak di atas basis support 3.680/3.720. Beberapa saham pilihan dari TRIM-Desk di bawah, kami perkirakan akan menjadi penentu pembalikan arah (technical rebound dan sekaligus menahan laju gempuran tekanan jual pada saham-saham small-cap.



S1	S2	R1	R2
3,662	3,622	3,747	3,792

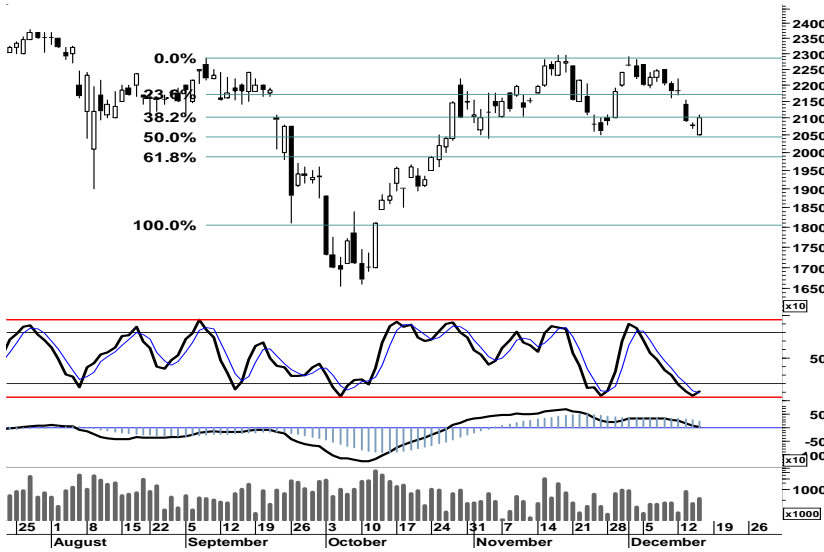
Saham Pilihan

Saham	Harga (Rp)	Rekomendasi	Stochastic	RSI	BB Top	BB Bottom	S1	S2	R1	R2
AALI	21,000	StrongBuy	10.78	46.07	22,000	20,200	20,650	20,300	21,500	21,850
ASII	69,050	OverSold	31.30	44.36	76,500	67,700	67,700	66,350	73,050	74,400
BBKA	7,800	OverSold	29.41	46.08	8,050	7,750	7,750	7,650	7,950	8,050
BMRI	6,450	OverSold	33.33	42.46	6,650	6,400	6,300	6,150	6,650	6,800
TLKM	7,150	OverSold	27.78	42.66	7,300	7,100	7,050	6,950	7,250	7,350
UNTR	24,050	OverSold	25.00	44.21	25,100	23,950	23,850	23,650	24,550	24,750

AALI

21,000

StrongBuy



Perlawanan aksi akumulasi kemarin, berhasil mengembalikan AALI kedalam teritori positif dengan melakukan pembalikan arah pada basis 50% Fibonacci Retracement.

Signal positif yang muncul pada stochastic, diharapkan mampu mendorong kembali AALI menguji resistensi 21.500.

S1	S2	R1	R2
20,650	20,300	21,500	21,850

ASII

69,050

OverSold



Secara umum ASII masih mencoba bertahan dalam uptrend channel, dengan basis trend support 67.700 - 67.800.

Munculnya celah resistensi dan sentimen positif peningkatan peringkat Indonesia kedalam Investment Grade, diharapkan ASII mampu melakukan technical rebound dan menguji celah resistensi pada level 72.000.

S1	S2	R1	R2
67,700	66,350	73,050	74,400

BBCA

7,800

OverSold



Sebagaimana ASII, BBCA masih bertahan dalam up-trend channel dengan basis trend support 7.650.

Terbatasnya ruang pelemahan yang tercermin pada leading indicator, membuka peluang BBCA untuk melakukan pembalikan arah dan menguji penetrasi resistensi harga di 7.950.

S1	S2	R1	R2
7,750	7,650	7,950	8,050

BMRI

6,450

OverSold



Aksi akumulasi yang terjadi menjelang akhir sesi perdagangan kemarin, telah membuka peluang bagi BMRI untuk bertahan dalam uptrend channel dengan basis 38,2% Fibonacci Retracement sebagai support.

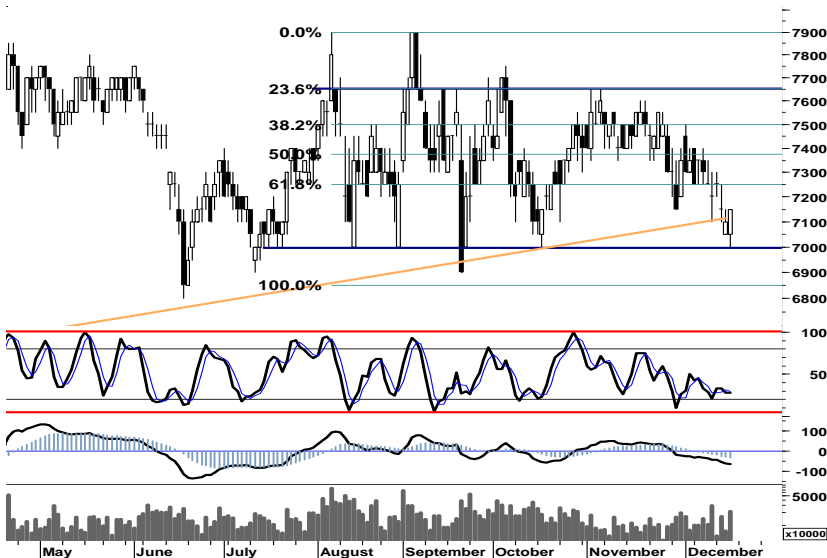
Indikasi signal positif yang tercermin pada stochastic (5d), memberikan peluang BMRI melanjutkan penguatan menguji resistensi 6.650.

S1	S2	R1	R2
6,300	6,150	6,650	6,800

TLKM

7,150

OverSold



Support harga 7.000 pada TLKM, telah membatasi ruang pelemahan dan mengembalikan TLKM pada area hijau perdagangan.

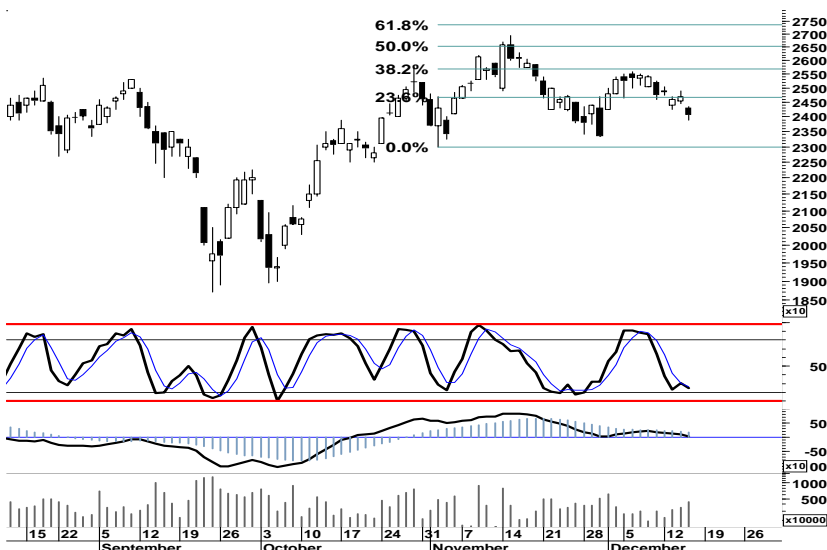
Pada perdagangan hari ini, TLKM memiliki peluang untuk menguji penetrasi resistensi 7.250.

S1	S2	R1	R2
7,050	6,950	7,250	7,350

UNTR

24,050

OverSold



Sebagaimana ASII, anak usaha emiten tersebut juga mengalami tekanan dengan meninggalkan celah resistensi 23,6% Fibonacci Retracement di level 24.450.

Untuk dapat kembali pada area positif trading, UNTR diharapkan mampu menutup celah resistensi sekaligus menguji 24.550.

S1	S2	R1	R2
23,850	23,650	24,550	24,750

TRADE DATA

JCI (IHSG) 3,701.5 -50.1 -1.33%

YTD (Rp)	-0.1%	Volume (m) :	3,824
YTD (USD)	-1.3%	Nilai (Rpbn) :	3,328
Moving Avg 20day	3,734	Mkt Cap (Rpbn) :	3,439
Moving Avg 50day	3,723	Market P/E (x) :	16.2
Moving Avg 200day	3,766	Market Div. Yield (%) :	2.4

Indonesia & Sectors +/- (%) YTD (%)

MSCI Indonesia	4,592.5	-82.0	-1.76	1.01
JII	514.4	-9.8	-1.87	-3.47
LQ45	650.1	-10.7	-1.61	-1.71
JAKFIN Index	479.0	-5.2	-0.01	2.64
JAKINFR Index	685.5	-3.9	-0.01	-16.32
JAKMINE Index	2,492.0	-26.7	-0.01	-23.89
JAKCONS Index	1,265.4	-14.1	-0.01	15.60
JAKTRAD Index	559.0	-11.2	-0.02	17.92
JAKMIND Index	1,229.3	-46.8	-0.04	27.12
JAKBIND Index	391.0	-6.8	-0.02	0.96
JAKPROP Index	224.7	-0.6	-0.00	10.65
JAKAGRI Index	2,121.4	16.7	0.01	-7.13

Commodities +/- (%) YTD (%)

CRB Index	294.45	-0.8	-0.28	-11.52
Oil & Gas				
Crude Oil	93.87	-1.1	-1.14	2.72
Natural Gas	3.13	-0.0	-0.29	-29.01
COAL (Rotterdam)	109.85	-0.7	-0.63	-16.40
COAL (Amsterdam)	111.05	0.3	0.27	-11.83
COAL (Australia,wk)	109.55	0.0	0.00	-10.50
Industrial Metals				
Alumunium	1,968.00	13.0	0.66	-19.98
Nickel	17,895	495	2.84	-27.70
Tin	18,600	75	0.40	-30.86
Precious Metal				
Gold	1,577.20	-9.7	-0.61	10.96
Silver	29.23	0.3	1.20	-5.43
Soft Commodities				
CPO (Malaysia)	2,972.00	-76.0	-2.49	-22.08
CPO (Netherlands)	997.50	-30.0	-2.92	-22.37
Rubber	3,243.00	-120.6	-3.59	-35.06
Corn	579.00	-1.8	-0.30	-7.95
Wheat	579.25	-1.5	-0.26	-27.07
Soybeans	1,111.75	11.8	1.07	-20.23
Rice (Indonesia)	8,000.00	0.0	0.00	12.68

Winners

Stock	Price	(%)	Stock	Price	(%)
DILD	260	23.81	LPPF	2,300	-23.33
JRPT	2,025	19.12	SMGR	10,300	-4.19
BIPI	196	9.50	ASII	69,050	-4.10
RMBA	810	5.19	UNTR	24,050	-2.63
SMAR	6,900	2.99	PGAS	3,050	-2.40
BORN	830	1.22	GGRM	60,600	-2.26
AALI	21,000	1.20	ADRO	1,820	-2.15
BUMI	2,250	1.12	BBNI	3,775	-1.95
ISAT	5,300	0.95	BBRI	6,500	-1.52
TLKM	7,150	0.70	BBCA	7,800	-1.27

Losers

Stock	Price	(%)	Stock	Price	(%)
LPPF	2,300	-23.33	SMGR	10,300	-4.19
SMGR	10,300	-4.19	UNTR	24,050	-2.63
ASII	69,050	-4.10	PGAS	3,050	-2.40
UNTR	24,050	-2.63	GGRM	60,600	-2.26
PGAS	3,050	-2.40	ADRO	1,820	-2.15
GGRM	60,600	-2.26	BBNI	3,775	-1.95
ADRO	1,820	-2.15	BBRI	6,500	-1.52
BBNI	3,775	-1.95	BBCA	7,800	-1.27
BBRI	6,500	-1.52			
BBCA	7,800	-1.27			

Regional Indices +/- (%) YTD (%)

MXWO	MSCI Word	1,142.9	3.8	0.33	-10.72
SPX	S&P 500	1,215.8	3.9	0.32	-3.33
US					
Dow Jones Industrial		11,868.8	45.3	0.38	2.52
Nasdaq	US	2,541.0	1.7	0.07	-4.22
Europe					
EURO 50	Europe	234.7	2.3	0.99	-14.89
FTSE	London	5,400.9	34.1	0.63	-8.46
DAX	German	5,730.6	55.5	0.98	-17.12
CAC	France	2,998.7	22.6	0.76	-21.19
SMI	Swiss	5,784.1	65.1	1.14	-10.13
BRIC					
BOVESPA	Brazil	56,331.1	-315.7	-0.56	-18.72
MICEX	Russia	1,393.6	21.2	1.54	-17.44
SENSEX	India	15,836.5	-44.7	-0.28	-22.78
NIFTY	India	4,746.4	-16.9	-0.35	-22.63
SHCOMP	China	2,180.9	-47.6	-2.14	-22.33
SZCOMP	China	886.0	-20.4	-2.26	-31.36

Developed ASIA

Nikkei	Japan	8,377.4	-141.8	-1.66	-18.10
TPX	Japan	725.0	-12.0	-1.62	-19.33
HIS	Hong kong	18,026.8	-327.6	-1.78	-21.74
KOSPI	S.Korea	1,819.1	-38.6	-2.08	-11.31
TAIEX	Taiwan	6,764.6	-158.0	-2.28	-24.61
FSSTI	Singapore	2,635.3	-37.1	-1.39	-17.39

ASEAN

SET	Thailand	1,024.2	0.7	0.07	-0.83
PCOMP	Philippines	4,282.7	-3.3	-0.08	1.94
KLCI	Malaysia	1,464.1	1.0	0.07	-3.61
VNINDEX	Vietnam	364.5	-3.1	-0.84	-24.80

Currency +/- (%) YTD (%)

EURUSD	Euro	1.302	0.003	0.25	-2.75
GBPUSD	United Kingdom	1.551	0.005	0.31	-0.63
USDCHF	Switzerland	0.940	-0.014	-1.43	0.51
USDCAD	Canada	1.035	-0.005	-0.44	3.72
AUDUSD	Australia	0.992	0.001	0.12	-3.04
NZDUSD	New Zealand	0.753	0.003	0.39	-3.44
USDJPY	Japan	77.9	-0.210	-0.27	-4.02
USDCNY	China	6.373	0.002	0.03	-3.54
USDHKD	Hongkong	7.781	-0.001	-0.02	0.10
USDSGD	Singapore	1.308	-0.002	-0.16	1.89
Rupiah	Indonesia	9,091.0	2.000	0.02	1.06

Value (Rpbn) Volume (Lot) Freq (x)

ASII	432,006	ELTY	1,397,771	INPC	4,854
BMRI	239,654	ENRG	606,735	ASII	4,628
BUMI	219,121	BIPI	297,338	SMRU	4,095
BBRI	191,090	BNBR	202,248	ADRO	4,009
ADRO	174,900	BUMI	199,663	ELTY	3,105
TLKM	150,167	ADRO	193,892	BMRI	3,043
ITMG	135,154	ASRI	147,423	EKAD	2,968
BBNI	111,482	KIJA	118,124	MNCN	2,822
SMGR	100,354	BORN	112,460	BIPI	2,658
INTP	98,309	SSIA	107,563	GTBO	2,475

Code	Last	Ytd Chg(%)	H-5 Chg (%)	Rekomendasi	STO	RSI	MACD	Bollinger Band		Support			Resistance			H-5	
								Top	Bottom	1	2	3	1	2	3	Highest	Lowest
AALI	21,000	-21.64	-4.76	StrongBuy	10.8	46.1	27.4	22,000	20,200	20,650	20,300	20,050	21,250	21,500	21,850	22,500	20,500
ACES	3,900	36.84	0.65	StrongSell	100.0	60.7	78.2	3,900	3,900	3,900	3,900	3,900	3,900	3,900	3,900	3,900	3,800
ADRO	1,820	-31.96	-8.54	StrongBuy	11.9	36.1	(24.3)	1,950	1,790	1,800	1,780	1,770	1,830	1,840	1,860	2,000	1,790
AISA	560	-28.21	0.00	Trading	40.0	35.9	(14.7)	575	555	550	540	530	570	580	590	580	550
ANTM	1,600	-35.35	-3.61	Accumulate	25.0	39.3	(13.1)	1,650	1,590	1,590	1,570	1,560	1,620	1,630	1,650	1,660	1,580
ASII	69,050	26.93	-4.96	OverSold	31.3	44.4	851.9	76,500	67,700	67,700	66,350	64,350	71,050	73,050	74,400	75,000	68,300
ASRI	450	47.54	2.27	Trading	52.4	54.2	3.9	458	450	444	437	434	454	457	464	470	435
BBCA	7,800	20.93	-1.89	OverSold	29.4	46.1	(8.8)	8,050	7,750	7,750	7,650	7,600	7,900	7,950	8,050	8,050	7,700
BBNI	3,775	-0.66	-2.58	OverSold	24.2	46.2	(0.2)	4,000	3,700	3,700	3,625	3,575	3,825	3,875	3,950	4,025	3,675
BBRI	6,500	25.60	-3.70	OverSold	36.4	43.3	(21.0)	6,750	6,450	6,400	6,300	6,200	6,600	6,700	6,800	6,800	6,350
BDMN	4,175	-24.09	-5.65	Accumulate	30.0	28.7	(123.3)	4,425	4,125	4,125	4,075	4,025	4,225	4,275	4,325	4,425	4,100
BISI	900	-51.87	1.12	Trading	54.5	48.0	(12.5)	925	885	885	870	855	915	930	945	940	870
BKSL	260	140.74	0.00	OverBought	60.0	52.4	1.9	271	259	254	247	244	264	267	274	275	250
BMRI	6,450	0.00	-3.01	OverSold	33.3	42.5	(86.7)	6,650	6,400	6,300	6,150	6,050	6,550	6,650	6,800	6,700	6,200
BSDE	930	5.68	4.49	OverBought	76.7	53.3	1.2	995	885	920	910	900	940	950	960	970	870
BTEL	260	10.64	0.00	Trading	45.5	41.4	(2.7)	272	255	254	247	244	264	267	274	270	250
BUMI	2,250	-28.00	3.45	OverBought	78.6	56.6	3.1	2,300	2,150	2,200	2,125	2,100	2,300	2,325	2,400	2,250	2,125
BWPT	1,150	-12.21	-4.96	OverSold	21.1	46.6	3.9	1,200	1,130	1,140	1,120	1,110	1,170	1,180	1,200	1,210	1,130
CPIN	2,250	25.70	-4.26	Trading	41.2	36.3	(70.1)	2,350	2,250	2,200	2,150	2,100	2,300	2,350	2,400	2,375	2,175
ELTY	124	-22.98	16.98	StrongSell	98.1	68.4	0.8	135	102	121	118	116	126	128	131	125	103
EXCL	4,375	-16.67	-4.37	Accumulate	26.1	32.7	(129.9)	4,625	4,350	4,350	4,300	4,250	4,450	4,500	4,550	4,625	4,350
GGRM	60,600	47.62	-4.34	OverSold	30.6	44.2	433.9	63,250	60,150	59,600	58,600	57,500	61,700	62,800	63,800	63,750	59,700
HEXA	8,600	18.62	0.00	StrongSell	83.3	62.2	134.6	8,750	8,550	8,550	8,500	8,450	8,650	8,700	8,750	8,650	8,450
HRUM	6,850	-27.51	-5.52	Accumulate	21.9	36.9	(175.0)	7,350	6,750	6,800	6,700	6,650	6,950	7,000	7,100	7,400	6,750
INCO	3,050	-38.69	-3.17	OverSold	38.9	41.2	(50.3)	3,200	3,025	3,000	2,950	2,925	3,075	3,100	3,150	3,175	2,975
INDF	4,550	-8.08	-5.70	StrongBuy	15.2	30.3	(107.3)	4,775	4,475	4,525	4,500	4,475	4,575	4,600	4,625	4,825	4,500
INDY	2,100	-58.82	-4.55	Accumulate	22.2	37.3	(70.6)	2,200	2,075	2,075	2,050	2,025	2,125	2,150	2,175	2,225	2,050
INTP	16,050	0.00	3.55	StrongSell	80.6	59.6	192.5	16,700	15,250	15,950	15,800	15,650	16,250	16,400	16,550	16,450	15,100
ISAT	5,300	-2.75	-1.85	OverSold	20.8	49.2	49.6	5,600	5,100	5,250	5,150	5,100	5,400	5,450	5,550	5,600	5,200
ITMG	36,000	-33.70	-6.13	StrongBuy	16.6	30.3	(1,308.6)	38,700	35,350	35,150	34,300	33,650	36,650	37,300	38,150	39,100	34,950
JPFA	4,075	28.35	-2.98	Accumulate	38.5	29.0	(148.0)	4,225	4,075	4,025	3,975	3,925	4,125	4,175	4,225	4,275	4,025
JSMR	4,225	19.01	5.62	StrongSell	88.4	69.4	89.5	4,325	4,150	4,175	4,125	4,075	4,275	4,325	4,375	4,275	3,925
KLBF	3,325	0.00	-2.92	Accumulate	25.0	35.9	(11.8)	3,475	3,325	3,275	3,225	3,150	3,400	3,475	3,525	3,500	3,300
LSIP	2,175	-14.37	-5.43	OverSold	28.0	42.0	(4.2)	2,325	2,075	2,100	2,025	1,975	2,225	2,275	2,350	2,325	2,075
MAIN	900	-70.97	-1.10	Trading	46.2	34.2	(19.7)	930	895	895	890	885	905	910	915	930	890
MAPI	5,000	80.18	-6.54	StrongBuy	10.2	38.7	(18.6)	5,275	4,875	4,975	4,950	4,925	5,025	5,050	5,075	5,350	4,950
MBAI	12,750	-18.79	2.00	StrongSell	100.0	52.5	(76.3)	12,750	12,750	12,750	12,750	12,750	12,750	12,750	12,750	12,750	12,500
PGAS	3,050	-31.84	-4.69	Trading	41.2	48.6	36.4	3,200	3,050	3,025	2,975	2,950	3,100	3,125	3,175	3,200	3,000
PTBA	16,600	-30.69	-2.64	Trading	46.5	40.4	(160.5)	17,300	16,500	16,400	16,150	15,950	16,850	17,050	17,300	17,200	16,350
RALS	600	-97.13	3.45	OverBought	77.8	49.6	(10.0)	610	580	575	550	525	625	650	675	620	570
SGRO	2,975	-8.46	-1.65	OverSold	33.3	47.7	(7.0)	3,025	2,950	2,950	2,925	2,900	3,000	3,025	3,050	3,050	2,925
SIPD	54	-27.03	0.00	Trading	58.3	45.3	(0.9)	56	54	54	53	53	55	55	56	56	52
SMCB	2,175	-2.25	3.57	StrongSell	95.0	77.4	72.3	2,200	2,150	2,125	2,075	2,050	2,200	2,225	2,275	2,175	2,000
SMGR	10,300	4.57	6.19	TakeProfit	78.7	63.2	287.0	11,150	9,500	10,150	10,000	9,750	10,550	10,800	10,950	10,800	9,450
SMRA	1,160	7.41	3.57	OverBought	76.2	58.2	12.0	1,220	1,130	1,130	1,100	1,070	1,190	1,220	1,250	1,220	1,060
SSIA	630	-30.00	27.27	StrongSell	90.9	84.3	50.7	675	505	605	580	565	645	660	685	630	480
TINS	1,710	-40.00	-0.58	OverBought	62.5	39.3	(34.2)	1,730	1,700	1,690	1,670	1,650	1,730	1,750	1,770	1,730	1,680
TLKM	7,150	-10.63	-1.38	OverSold	27.8	42.7	(57.0)	7,300	7,100	7,050	6,950	6,900	7,200	7,250	7,350	7,350	7,000
UNTR	24,050	-1.03	-5.31	OverSold	25.0	44.2	(1.7)	25,100	23,950	23,850	23,650	23,400	24,300	24,550	24,750	25,450	23,900
UNVR	17,500	9.03	-1.69	OverSold	36.0	55.6	313.7	17,750	17,300	17,250	17,000	16,850	17,650	17,800	18,050	18,000	17,100

S1 = Support 1 S2 = Support 2 S3 = Support 3
 R1 = Resisten 1 R2 = Resisten 2 R2 = Resisten 2
 STO = Stochastic Oscillator
 RSI = Relative Strength Index
 MACD = Moving Average Convergence Divergence
 H-5 = 5 hari sebelumnya

RESEARCH TEAM

Michele Gabriela	Equity Analyst	(michele.gabriela@trimegah.com)
T Heldy Arifien	Technical Analyst	(heldy@trimegah.com)
Rovandi	Research Assistant	(rovandi@trimegah.com)

EQUITY CAPITAL MARKET TEAM

Nathanael Benny Prasetyo	Head of Retail ECM	(benny.prasetyo@trimegah.com)
Windra Djulnaily	Pluit, Jakarta	(windra.djulnaily@trimegah.com)
Ariawan Anwar	Artha Graha, Jakarta	(ariawan.anwar@trimegah.com)
Ferry Zabur	Kelapa Gading, Jakarta	(ferry.zabur@trimegah.com)
Wirjawan Joesoef	Mangga Dua, Jakarta	(iwan@trimegah.com)
Lukman Abdul Azis	Kebon Jeruk, Jakarta	(lukman@trimegah.com)
Untung Wijaya	Semarang, Jawa Tengah	(untung.wijaya@trimegah.com)
Sonny Muljadi	Surabaya, Jawa Timur	(sonny.muljadi@trimegah.com)
Ni Made Dwi Hapsari Wijayanti	Denpasar, Bali	(dwihapsari.wijayanti@trimegah.com)
Philip Fernando Suwandi	Makassar, Sulawesi Selatan	(philip.fs@trimegah.com)
agus.jatmiko	Balikpapan, Kalimantan Timur	(agus.jatmiko@trimegah.com)
Asep Saepudin	Bandung, Jawa Barat	(asep.saepudin@trimegah.com)
Ariffianto	Cirebon, Jawa Barat	(ariffianto@trimegah.com)
Very Wijaya	Medan, Sumatera Utara	(very.wijaya@trimegah.com)
Tantie Rivi Watie	Pekanbaru, Riau	(tantierw@trimegah.com)
Agus Bambang Suseno	Solo, Jawa Tengah	(agus.suseno@trimegah.com)
Untung Wijaya	Yogyakarta, Jawa Tengah	(untung.wijaya@trimegah.com)
Donny Kristanto Setiadi	Palembang, Sumatra Selatan	(donny.kristanto@trimegah.com)
Rr. Putri Ayu Erikusuma	Malang, Jawa Timur	(putri.ayu@trimegah.com)

PT Trimegah Securities Tbk
18th Fl, Artha Graha Building
Jl. Jend. Sudirman Kav. 52-53
Jakarta 12190, INDONESIA
Tel : (6221) 2924 9088 Fax : (6221) 2924 9163

DISCLAIMER

This report has been prepared by PT Trimegah Securities Tbk on behalf of itself and its affiliated companies and is provided for information purposes only. Under no circumstances is it to be used or considered as an offer to sell, or a solicitation of any offer to buy. This report has been produced independently and the forecasts, opinions and expectations contained herein are entirely those of Trimegah Securities.

While all reasonable care has been taken to ensure that information contained herein is not untrue or misleading at the time of publication, Trimegah Securities makes no representation as to its accuracy or completeness and it should not be relied upon as such. This report is provided solely for the information of clients of Trimegah Securities who are expected to make their own investment decisions without reliance on this report. Neither Trimegah Securities nor any officer or employee of Trimegah Securities accept any liability whatsoever for any direct or consequential loss arising from any use of this report or its contents. Trimegah Securities and/or persons connected with it may have acted upon or used the information herein contained, or the research or analysis on which it is based, before publication. Trimegah Securities may in future participate in an offering of the company's equity securities.