

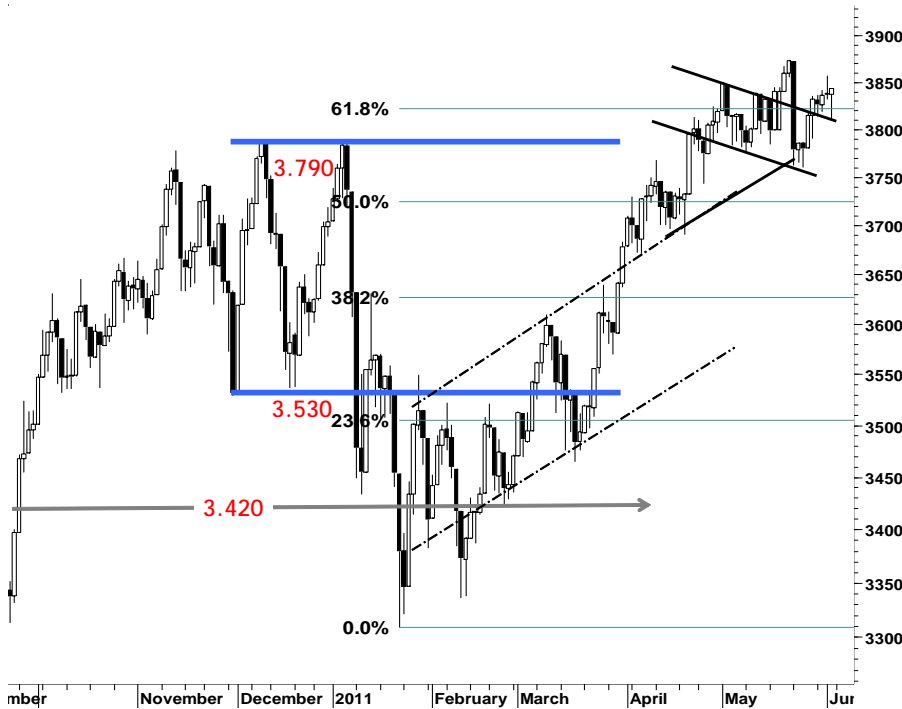
IHSG

3.844,0

6,3

0,16%

Ulisan Pasar



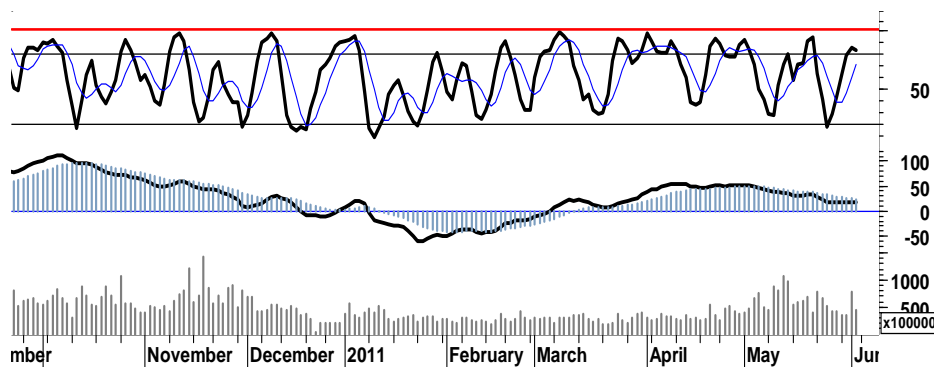
Berbeda dengan kondisi perdagangan hari sebelumnya, di penghujung akhir pekan lalu akumulasi pembelian terhadap sejumlah saham favorit maupun saham unggulan berhasil menahan laju tekanan yang menyeret IHSG menguji support harga 3.810 sebelum akhirnya bergerak memasuki area positif dengan membukukan nilai positif 0,2% ditutup pada level 3.844.

Penguatan IHSG pada akhir pekan lalu mendorong leading indicator memasuki area overbought, tanpa disertai pertumbuhan rasio volume perdagangan yang baik. Hal ini mengindikasikan bahwa, penguatan IHSG tersebut cenderung bergerak moderat.

Leading Indicator yang juga cenderung menggambarkan indikasi signal negatif dead-cross di penghujung perjalanan melanjutkan rally penguatannya menguji resistensi harga 3.850, mencerminkan bahwa IHSG di awal pekan ini rawan akan aksi lanjutan profit taking dan jual.

Waspada sentimen negatif pelemahan indeks bursa-bursa global kemarin dengan memperketat stop loss level harga 3.780, apabila pada perdagangan hari ini IHSG gagal melakukan penetrasi resistensi kuat 3.850.

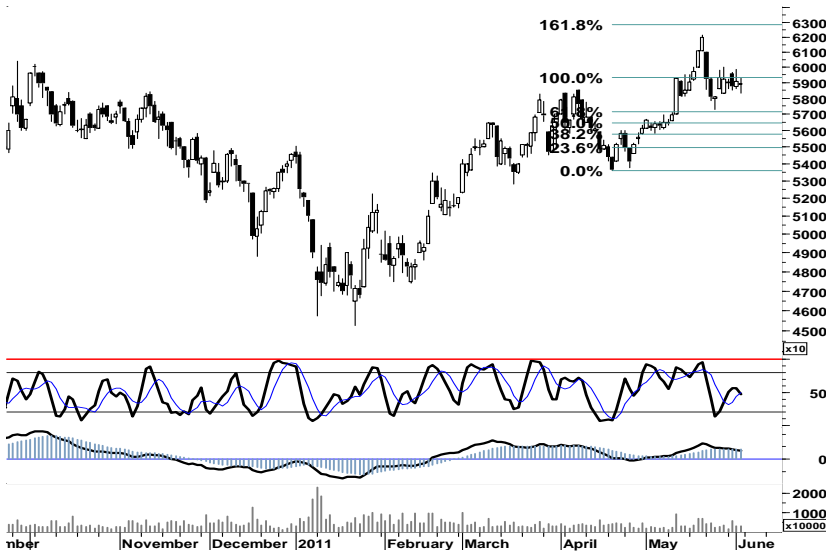
IHSG pada perdagangan hari ini akan kembali mencoba bergerak dalam interval harga 3.810 - 3.850.



S1	S2	R1	R2
3,820	3,800	3,855	3,865

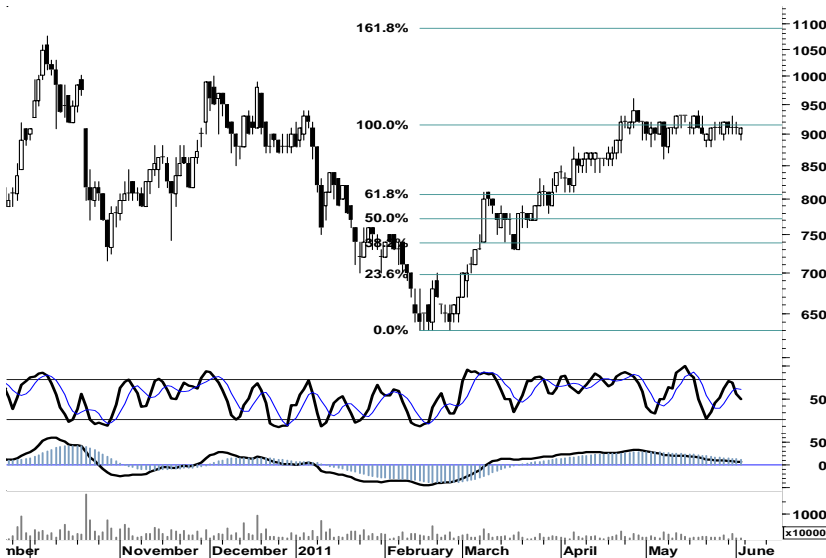
Saham Pilihan

Saham	Harga (Rp)	Rekomendasi	Stochastic	RSI	BB Top	BB Bottom	S1	S2	R1	R2
ASII	58,950	Trading	47.54	54.21	59,300	58,700	58,450	57,900	59,800	60,350
BSDE	910	Trading	50.00	53.79	920	905	900	885	925	940
BUMI	3,350	OverSold	28.57	43.83	3,400	3,300	3,325	3,300	3,400	3,425
EXCL	5,950	StrongBuy	18.60	39.13	6,450	5,650	5,850	5,700	6,200	6,350
INCO	4,775	Trading	18.75	44.52	4,875	4,750	4,725	4,675	4,875	4,925
UNVR	14,950	Trading	46.67	49.67	15,050	14,700	14,850	14,700	15,100	15,250



Ditutup sedikit di atas pivot support harga, menempatkan ASII pada kondisi berimbang. Dimana untuk dapat keluar dari area konsolidasi, ASII diharapkan mampu bergerak menembus resistensi harga 59.300.

S1	S2	R1	R2
58,450	57,900	59,800	60,350



Secara umum BSDE berada pada area konsolidasi 890-940.

Dead-cross serta negative-sloop merupakan signal negatif yang memiliki peluang untuk menekan BSDE menguji support area 880-890.

Diharapkan BSDE di awal pekan ini, mampu bergerak positif menguji penetrasi resistensi 910.

S1	S2	R1	R2
900	885	925	940



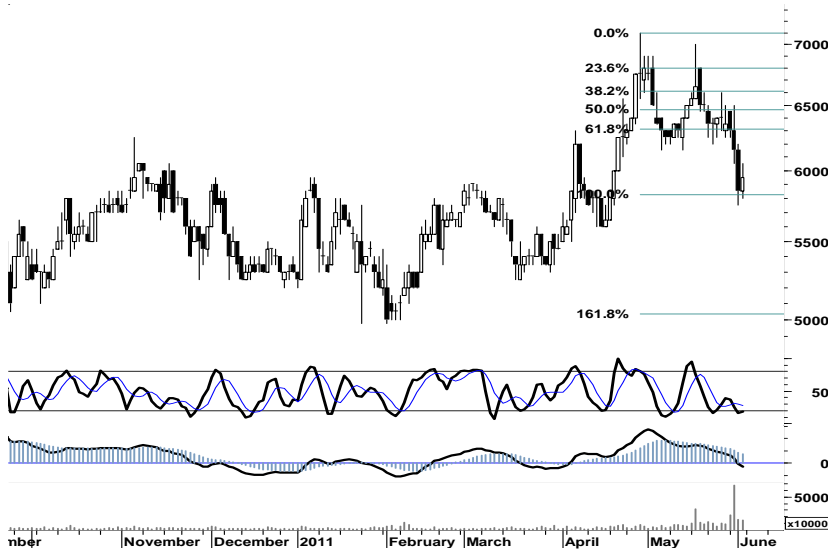
Ditengah minimnya signal positif, BUMI memiliki peluang untuk bergerak mix dalam interval 3.300-3.400.

S1	S2	R1	R2
3,325	3,300	3,400	3,425

EXCL

5,950

StrongBuy



Signal positif stochastic serta indikasi golden-cross pada leading indicator, membuka peluang bagi EXCL untuk bertahan pada basis support terendah 5.800.

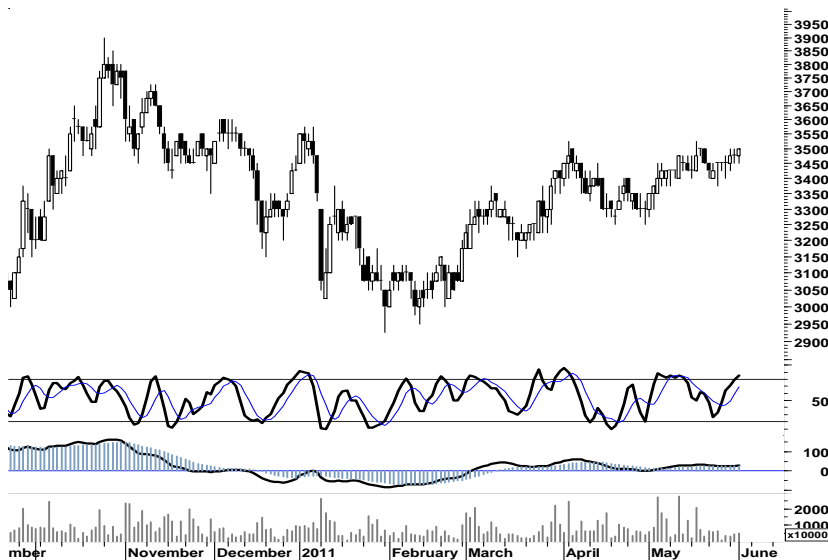
EXCL memiliki peluang untuk bergerak mix-positif, selanjutnya mencoba berada dalam interval 5.900 - 6.200.

S1	S2	R1	R2
5,850	5,700	6,200	6,350

INCO

4,775

Trading



Ditutup dalam area pivot support 4.775, menempatkan INCO pada kondisi berimbang.

Akumulasi pembelian dapat dilakukan, apabila INCO mampu bergerak di atas support 4.775.

S1	S2	R1	R2
4,725	4,675	4,875	4,925

UNVR

14,950

Trading



Signal positif stochastic, diharapkan mampu mendorong UNVR untuk bergerak positif menguji penetrasi 15.100.

S1	S2	R1	R2
14,850	14,700	15,100	15,250

TRADE DATA

JCI (IHSG) 3,844.0 6.3 0.16%

YTD (Rp)	3.8%	Volume (m) :	12,555
YTD (USD)	9.5%	Nilai (Rpbn) :	4,561
Moving Avg 20day	3,819	Mkt Cap (Rpbn) :	3,426
Moving Avg 50day	3,763	Market P/E (x) :	16.5
Moving Avg 200day	3,566	Market Div. Yield (%) :	2.4

Indonesia & Sectors +/- (%) YTD (%)

MSCI Indonesia	4,763.8	20.5	0.43	4.78
JII	532.2	-0.3	-0.05	-0.13
LQ45	684.5	2.2	0.32	3.50
JAKFIN Index	502.5	3.8	0.01	7.67
JAKINFR Index	786.6	-3.4	-0.00	-3.98
JAKMINE Index	3,265.6	6.5	0.00	-0.26
JAKCONS Index	1,132.3	2.8	0.00	3.44
JAKTRAD Index	511.6	-0.5	-0.00	7.92
JAKMIND Index	1,067.2	-3.7	-0.00	10.36
JAKBIND Index	404.8	1.3	0.00	4.53
JAKPROP Index	211.3	-0.2	-0.00	4.04
JAKAGRI Index	2,400.5	-6.9	-0.00	5.09

Commodities +/- (%) YTD (%)

CRB Index	348.61	0.7	0.20	4.75
Oil & Gas				
Crude Oil	100.22	-0.2	-0.18	9.67
Natural Gas	4.71	-0.1	-1.81	6.86
COAL (Rotterdam)	122.80	1.0	0.78	-6.54
COAL (Amsterdam)	123.01	-0.7	-0.60	-2.33
COAL (Australia,wk)	118.40	0.0	0.00	-3.27
Industrial Metals				
Aluminium	2,627.8	22.0	0.84	6.85
Nickel	22,800	225	1.00	-7.88
Tin	26,400	-200	-0.75	-1.86
Precious Metal				
Gold	1,542.40	9.7	0.63	8.51
Silver	36.19	-0.0	-0.03	17.09
Soft Commodities				
CPO (Malaysia)	3,448.00	18.0	0.52	-9.60
CPO (Netherland)	1,180.00	-7.5	-0.63	-8.17
Rubber	5,260.14	129.1	2.52	5.33
Corn	754.00	-12.5	-1.63	19.87
Wheat	773.75	4.0	0.52	-2.58
Soybeans	1,414.50	7.5	0.53	1.49
Rice (Indonesia)	6,750.00	0.0	0.00	-4.93

Winners

Stock	Price	(%)	Stock	Price	(%)
MEGA	3,700	4.23	SMMA	2,650	-3.64
BBRI	6,500	4.00	ICBP	5,050	-2.88
BYAN	18,150	2.54	SMAR	7,700	-2.53
INTP	17,200	2.38	JSMR	3,425	-2.14
EXCL	5,950	1.71	BRAU	540	-1.82
ADRO	2,450	1.03	INDY	4,150	-1.78
UNVR	14,950	1.01	TLKM	7,650	-1.29
BBCA	7,150	0.70	PTBA	21,250	-0.70
BBNI	3,850	0.65	BMRI	7,100	-0.70
PGAS	4,075	0.62	ASII	58,950	-0.25

Losers

Stock	Price	(%)	Stock	Price	(%)
SMMA	2,650	-3.64	ICBP	5,050	-2.88
ICBP	5,050	-2.88	SMAR	7,700	-2.53
SMAR	7,700	-2.53	JSMR	3,425	-2.14
JSMR	3,425	-2.14	BRAU	540	-1.82
BRAU	540	-1.82	INDY	4,150	-1.78
INDY	4,150	-1.78	TLKM	7,650	-1.29
TLKM	7,650	-1.29	PTBA	21,250	-0.70
PTBA	21,250	-0.70	BMRI	7,100	-0.70
BMRI	7,100	-0.70	ASII	58,950	-0.25
ASII	58,950	-0.25			

Regional Indices +/- (%) YTD (%)

MXWO	MSCI World	1,320.1	-5.3	-0.40	3.13
SPX	S&P 500	1,300.2	-12.8	-0.97	3.38
US					
Dow Jones Industrial		12,151.3	-97.3	-0.79	4.96
Nasdaq	US	2,732.8	-40.5	-1.46	3.01
Europe					
EURO 50	Europe	273.7	-1.0	-0.36	-0.78
FTSE	London	5,855.0	7.1	0.12	-0.76
DAX	German	7,109.0	34.9	0.49	2.82
CAC	France	3,890.7	0.8	0.02	2.26
SMI	Swiss	6,407.4	-89.1	-1.37	-0.45
BRIC					
BOVESPA	Brazil	64,340.5	122.4	0.19	-7.16
MICEX	Russia	1,633.0	-25.4	-1.53	-3.26
SENSEX	India	18,376.5	-117.7	-0.64	-10.40
NIFTY	India	5,516.8	-33.6	-0.61	-10.07
SHCOMP	China	2,728.0	22.8	0.84	-2.85
SZCOMP	China	1,124.3	18.4	1.66	-12.90

Developed ASIA

Nikkei	Japan	9,492.2	-62.8	-0.66	-7.20
TPX	Japan	816.6	-9.2	-1.11	-9.15
HIS	Hong kong	22,949.6	-304.3	-1.31	-0.37
KOSPI	S.Korea	2,113.5	-0.7	-0.03	3.05
TAIEX	Taiwan	9,046.3	54.9	0.61	0.82
FSSTI	Singapore	3,145.7	-14.9	-0.47	-1.39

ASEAN

SET	Thailand	1,057.9	-2.0	-0.18	2.43
PCOMP	Philippines	4,297.6	-27.4	-0.63	2.30
KLCI	Malaysia	1,559.9	1.8	0.12	2.70
VNINDEX	Vietnam	443.4	-7.2	-1.59	-8.51

Currency +/- (%) YTD (%)

EURUSD	Euro	1.464	0.014	0.99	9.35
GBPUSD	United Kingdom	1.643	0.005	0.34	5.21
USDCHF	Switzerland	0.834	-0.009	-1.07	-10.87
USDCAD	Canada	0.978	0.002	0.19	-2.02
AUDUSD	Australia	1.072	0.005	0.43	4.72
NZDUSD	New Zealand	0.816	0.000	0.02	4.55
USDJPY	Japan	80.3	-0.560	-0.69	-0.96
USDCNY	China	6.480	-0.003	-0.05	-1.93
USDHKD	Hongkong	7.778	-0.001	-0.01	0.06
USDSGD	Singapore	1.229	-0.004	-0.30	-4.22
Rupiah	Indonesia	8,528.0	-15.000	-0.18	-5.20

Value

Value	(Rpbn)	Volume	(Lot)	Freq	(x)
BMRI	265,099	DEWA	1,067,217	JPRS	11,063
BBRI	264,265	ENRG	800,050	ENRG	3,242
BUMI	182,054	BNBR	507,141	BHIT	2,984
ASII	160,433	BULL	449,990	BBRI	2,625
ADRO	140,238	ELTY	425,242	BULL	2,585
TLKM	120,912	TRUB	194,040	PKPK	2,464
EXCL	84,011	BHIT	190,584	EXCL	2,305
ENRG	81,848	MIRA	178,435	INPC	2,066
BORN	66,782	MDLN	156,137	DEWA	2,063
BBCA	63,208	JPRS	139,273	BMRI	2,043

Code	Last	Ytd Chg(%)	H-5 Chg (%)	Rekomendasi	STO	RSI	MACD	Bollinger Band		Support			Resistance			H-5	
								Top	Bottom	1	2	3	1	2	3	Highest	Lowest
AALI	23,850	-11.01	3.47	StrongSell	86.2	56.9	66.9	24,200	23,050	23,650	23,450	23,300	24,000	24,150	24,350	23,950	22,850
ACES	2,600	-8.77	-3.70	StrongBuy	-	41.7	7.5	2,750	2,550	2,600	2,600	2,575	2,625	2,650	2,650	2,700	2,600
ADRO	2,450	-8.41	3.16	TakeProfit	76.5	63.8	41.3	2,500	2,375	2,400	2,350	2,325	2,475	2,500	2,550	2,475	2,350
AKRA	1,810	6.47	7.74	StrongSell	87.9	69.7	51.7	1,880	1,750	1,800	1,790	1,770	1,830	1,850	1,860	1,850	1,660
ANTM	2,150	-13.13	0.00	OverBought	66.7	39.3	(32.1)	2,150	2,150	2,125	2,100	2,075	2,175	2,200	2,225	2,175	2,100
ASII	58,950	8.36	-0.59	Trading	47.5	54.2	616.5	59,300	58,700	58,450	57,900	57,500	59,400	59,800	60,350	60,000	58,300
BBCA	7,150	10.85	-1.38	OverSold	38.5	49.0	(30.6)	7,200	7,100	7,100	7,000	6,950	7,250	7,300	7,400	7,250	7,050
BBNI	3,850	1.32	1.32	OverBought	62.5	45.6	(33.0)	3,900	3,825	3,825	3,775	3,750	3,900	3,925	3,975	3,900	3,775
BBRI	6,500	25.60	4.00	OverBought	60.0	59.3	42.5	6,600	6,200	6,350	6,200	6,100	6,600	6,700	6,850	6,500	6,200
BBTN	1,630	-2.40	1.24	OverBought	68.4	45.1	(14.6)	1,670	1,620	1,630	1,630	1,620	1,640	1,650	1,650	1,670	1,610
BDMN	6,200	12.73	4.20	StrongSell	94.7	54.6	(36.1)	6,300	6,050	6,150	6,100	6,050	6,250	6,300	6,350	6,200	5,850
BISI	1,580	-15.51	1.94	OverBought	66.7	43.1	(31.9)	1,600	1,550	1,570	1,560	1,540	1,600	1,620	1,630	1,610	1,530
BMRI	7,100	10.08	1.43	OverBought	71.4	52.1	42.1	7,250	7,100	7,050	7,000	6,950	7,150	7,200	7,250	7,250	6,900
BSDE	910	3.41	0.00	Trading	50.0	53.8	5.6	920	905	900	885	880	920	925	940	930	890
BTEL	365	55.32	-2.67	OverBought	63.6	39.4	(2.4)	376	361	360	355	350	370	375	380	375	355
BUMI	3,350	7.20	0.00	OverSold	28.6	43.8	(21.4)	3,400	3,300	3,325	3,300	3,275	3,375	3,400	3,425	3,425	3,300
CTRA	420	20.00	1.20	Trading	56.3	59.4	7.7	423	415	415	410	405	425	430	435	430	410
ELTY	163	1.24	0.00	OverBought	78.3	55.3	4.0	167	159	161	159	157	165	167	169	166	151
EXCL	5,950	13.33	-7.03	StrongBuy	18.6	39.1	(25.9)	6,450	5,650	5,850	5,700	5,600	6,100	6,200	6,350	6,600	5,750
GGRM	44,600	8.65	2.53	TakeProfit	74.3	68.4	696.6	45,100	43,250	44,200	43,800	43,400	45,000	45,400	45,800	45,000	43,300
HEXA	6,550	-9.66	0.77	OverBought	63.2	57.3	128.7	6,650	6,350	6,450	6,350	6,200	6,700	6,850	6,950	6,700	6,300
INCO	4,775	-4.02	-2.55	Trading	18.8	44.5	(15.5)	4,875	4,750	4,725	4,675	4,625	4,825	4,875	4,925	4,900	4,725
INDF	5,500	11.11	0.92	OverBought	76.9	50.6	(24.2)	5,550	5,350	5,450	5,400	5,350	5,550	5,600	5,650	5,500	5,300
INDY	4,150	-18.63	-2.92	Trading	50.0	49.6	40.8	4,400	4,100	4,125	4,100	4,075	4,175	4,200	4,225	4,375	4,125
INTP	17,200	7.17	0.88	OverSold	39.5	55.9	58.7	17,400	16,700	16,900	16,600	16,400	17,400	17,600	17,900	17,400	16,650
ISAT	5,250	-3.67	0.96	OverBought	66.7	47.9	(18.3)	5,300	5,250	5,200	5,150	5,100	5,300	5,350	5,400	5,300	5,150
ITMG	46,700	-14.00	-0.85	OverSold	32.9	48.4	(71.8)	47,800	46,250	46,400	46,050	45,800	47,000	47,250	47,600	47,800	46,300
JSMR	3,425	-3.52	-0.72	OverBought	69.2	48.3	18.2	3,525	3,425	3,400	3,350	3,300	3,500	3,550	3,600	3,500	3,400
KLBF	3,450	3.76	2.99	OverBought	63.0	50.7	(15.8)	3,600	3,350	3,425	3,400	3,375	3,475	3,500	3,525	3,575	3,350
LSIP	2,425	-4.53	0.00	OverBought	66.7	53.0	2.1	2,450	2,400	2,400	2,350	2,325	2,475	2,500	2,550	2,450	2,350
MYOR	12,900	19.44	1.98	StrongSell	92.7	73.7	389.4	13,150	12,700	12,850	12,800	12,750	12,950	13,000	13,050	13,000	12,200
PGAS	4,075	-8.94	1.24	OverBought	68.8	55.8	8.1	4,100	4,050	4,025	3,950	3,925	4,125	4,150	4,225	4,100	3,975
PTBA	21,250	-11.27	-1.62	Trading	44.4	45.1	(147.1)	21,650	21,100	21,050	20,850	20,650	21,450	21,650	21,850	21,650	21,000
RALS	820	-4.65	6.49	Trading Sell	66.7	61.2	14.3	865	770	20,870	20,870	20,870	20,870	20,870	20,870	860	760
SGRO	3,450	6.15	0.73	OverBought	60.0	55.2	25.8	3,475	3,425	3,425	3,400	3,375	3,475	3,500	3,525	3,525	3,375
SMCB	2,250	1.12	5.88	OverBought	75.0	59.2	16.5	2,325	2,150	2,225	2,200	2,175	2,275	2,300	2,325	2,300	2,100
SMGR	9,650	-2.03	-1.03	Trading	55.6	57.2	65.2	9,750	9,650	9,600	9,500	9,450	9,750	9,800	9,900	9,800	9,500
SMRA	1,160	7.41	5.45	StrongSell	87.5	57.2	(5.1)	1,180	1,130	1,150	1,130	1,120	1,180	1,190	1,210	1,170	1,080
TINS	2,600	-8.77	-0.95	Trading	44.4	41.0	(40.9)	2,650	2,600	2,600	2,575	2,575	2,625	2,625	2,650	2,650	2,575
TLKM	7,650	-4.38	-0.65	StrongSell	81.8	52.0	48.2	7,800	7,600	7,600	7,550	7,500	7,700	7,750	7,800	7,750	7,550
UNTR	23,000	-5.35	3.37	StrongSell	93.5	60.4	198.4	23,300	22,650	22,700	22,350	22,200	23,200	23,350	23,700	23,050	22,000
UNVR	14,950	-6.85	0.67	Trading	46.7	49.7	(73.1)	15,050	14,700	14,850	14,700	14,650	15,050	15,100	15,250	14,950	14,700

S1 = Support 1 S2 = Support 2 S3 = Support 3
 R1 = Resisten 1 R2 = Resisten 2 R2 = Resisten 2
 STO = Stochastic Oscillator
 RSI = Relative Strength Index
 MACD = Moving Average Convergence Divergence
 H-5 = 5 hari sebelumnya

RESEARCH TEAM

Andrian Tanuwijaya	Equity Analyst	(andrian.tanuwijaya@trimegah.com)
Hanel Topada Era Tania	Equity Analyst	(hanel.tania@trimegah.com)
T Heldy Arifien	Technical Analyst	(heldy@trimegah.com)
Rovandi	Research Assistant	(rovandi@trimegah.com)

EQUITY CAPITAL MARKET TEAM

Nathanael Benny Prasetyo	Head of Retail ECM	(benny.prasetyo@trimegah.com)
Windra Djulnaily	Pluit, Jakarta	(windra.djulnaily@trimegah.com)
Ariawan Anwar	Artha Graha, Jakarta	(ariawan.anwar@trimegah.com)
Ferry Zabur	Kelapa Gading, Jakarta	(ferry.zabur@trimegah.com)
Wirjawan Joesoef	Mangga Dua, Jakarta	(iwan@trimegah.com)
Lukman Abdul Azis	Kebon Jeruk, Jakarta	(lukman@trimegah.com)
Tutik Suciati	Semarang, Jawa Tengah	(tuty.s@trimegah.com)
Sonny Muljadi	Surabaya, Jawa Timur	(sonny.muljadi@trimegah.com)
Ni Luh Ketut Sri Agustini	Denpasar, Bali	(sri.agustini@trimegah.com)
Philip Fernando Suwandi	Makassar, Sulawesi Selatan	(philip.fs@trimegah.com)
agus.jatmiko	Balikpapan, Kalimantan Timur	(agus.jatmiko@trimegah.com)
Asep Saepudin	Bandung, Jawa Barat	(asep.saepudin@trimegah.com)
Asep Saepudin	Cirebon, Jawa Barat	(asep.saepudin@trimegah.com)
Very Wijaya	Medan, Sumatera Utara	(very.wijaya@trimegah.com)
Tantie Rivi Watie	Pekanbaru, Riau	(tantierw@trimegah.com)
Agus Bambang Suseno	Solo, Jawa Tengah	(agus.suseno@trimegah.com)
Agus Bambang Suseno	Yogyakarta, Jawa Tengah	(agus.suseno@trimegah.com)
Donny Kristanto Setiadi	Palembang, Sumatra Selatan	(donny.kristanto@trimegah.com)
Sonny Muljadi	Malang, Jawa Timur	(sonny.muljadi@trimegah.com)

PT Trimegah Securities Tbk
18th Fl, Artha Graha Building
Jl. Jend. Sudirman Kav. 52-53
Jakarta 12190, INDONESIA
Tel : (6221) 2924 9088 Fax : (6221) 2924 9163

DISCLAIMER

This report has been prepared by PT Trimegah Securities Tbk on behalf of itself and its affiliated companies and is provided for information purposes only. Under no circumstances is it to be used or considered as an offer to sell, or a solicitation of any offer to buy. This report has been produced independently and the forecasts, opinions and expectations contained herein are entirely those of Trimegah Securities.

While all reasonable care has been taken to ensure that information contained herein is not untrue or misleading at the time of publication, Trimegah Securities makes no representation as to its accuracy or completeness and it should not be relied upon as such. This report is provided solely for the information of clients of Trimegah Securities who are expected to make their own investment decisions without reliance on this report. Neither Trimegah Securities nor any officer or employee of Trimegah Securities accept any liability whatsoever for any direct or consequential loss arising from any use of this report or its contents. Trimegah Securities and/or persons connected with it may have acted upon or used the information herein contained, or the research or analysis on which it is based, before publication. Trimegah Securities may in future participate in an offering of the company's equity securities.