

IHSG

3.269,5

-79,3

-2,37%

Ulisan Pasar



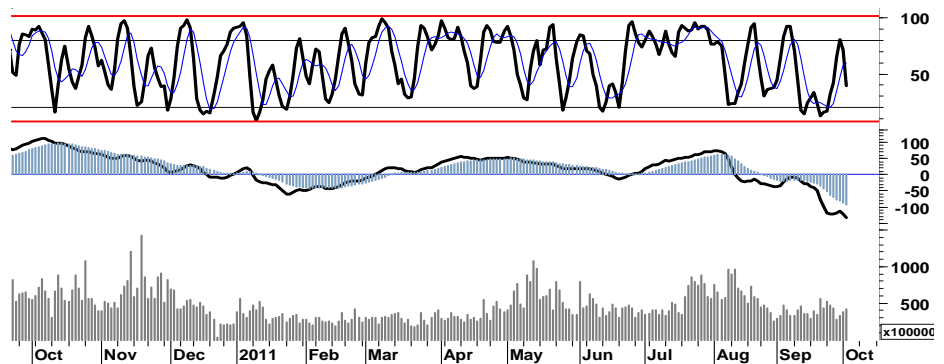
Rentetan aksi jual pada sejumlah saham unggulan, kembali mengakibatkan terpuruknya IHSG (-79,3point) menguji basis support harian 3.270 serta mendekati posisi terendah selama 2011 yang pernah dicapai pada bulan September di level 3.217.

Sejumlah saham unggulan pada sektor perbankan serta beberapa emiten pada sektor pertambangan seperti BMRI, BBNI, BBCA, BUMI, PTBA, dan UNTR merupakan kontributor terbesar terhadap pelemahan IHSG. Pada saat yang bersamaan, para pelaku asing mencatatkan nilai penjualan bersih sebesar Rp459,7miliar.

Sementara kekhawatiran akan kondisi krisis utang di Eropa, masih mewarnai pergerakan indeks bursa-bursa utama Eropa yang bergerak tertahan pada teritori negatif meskipun masih mencoba untuk menguat di menjelang akhir sesi perdagangan DAX -3,0%, CAC -2,6%. Dilain sisi indeks bursa di Amerika justru menguji teritori

positif dan bergerak menguat sejak awal sesi perdagangan DJI 2,4%, Nasdaq 3,0%, dan S&P500 2,3%.

Ditengah minimnya dorongan sentimen positif serta belum terlihatnya signal kuat yang dapat memberikan indikasi pembalikan arah, IHSG pada perdagangan hari ini masih akan dibayang-bayangi aksi jual. Adanya tendensi peningkatan volume transaksi ditengah derasnya tekanan harga selama 3 hari terakhir, diharapkan mampu memberikan angin segar bagi IHSG untuk melakukan 'technical rebound' serta melakukan penetrasi resistensi 3.310 agar dapat kembali pada siklus positif 3.310-3.610.



S1	S2	R1	R2
3,235	3,195	3,330	3,390

Saham Pilihan

Saham	Harga (Rp)	Rekomendasi	Stochastic	RSI	BB Top	BB Bottom	S1	S2	R1	R2
ASII	58,700	Sp.Buy	37.88	37.11	65,300	56,150	57,850	57,000	60,700	61,550
BBCA	7,200	Trading	43.90	37.83	7,800	7,050	7,100	6,950	7,450	7,600
BBRI	5,300	Sp.Buy	32.73	35.81	6,150	5,000	5,150	5,000	5,600	5,750
ITMG	34,600	Sp.Buy	10.92	27.44	41,850	32,200	34,050	33,500	36,700	37,250
SMGR	7,900	Trading	36.36	37.53	8,600	7,650	7,800	7,650	8,150	8,300
TLKM	7,450	Trading	56.67	51.79	7,650	7,300	7,350	7,250	7,750	7,850



Berada pada area trading positif serta mulai terbatasnya ruang tekanan, membuka peluang untuk melakukan spekulasi akumulasi dengan memperhatikan support-support area 57,850 - 58.850.

S1	S2	R1	R2
57,850	57,000	60,700	61,550



Ditutup pada area pivot support 7.200, memberikan peluang bagi BBCA untuk melakukan swing positif serta bertahan pada area konsolidasi positif dengan basis support 7.100.

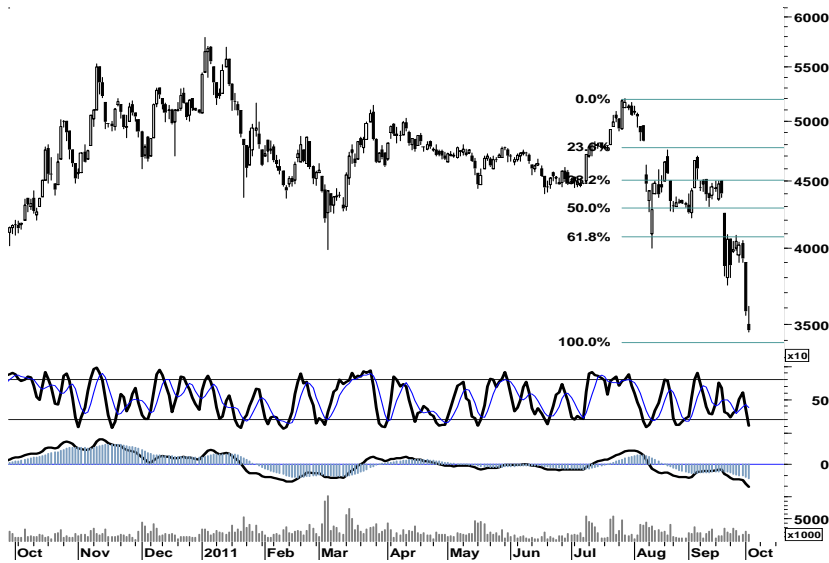
Kami perkirakan BBCA akan mencoba bergerak dalam rentang harga 7.100 - 7.450.

S1	S2	R1	R2
7,100	6,950	7,450	7,600



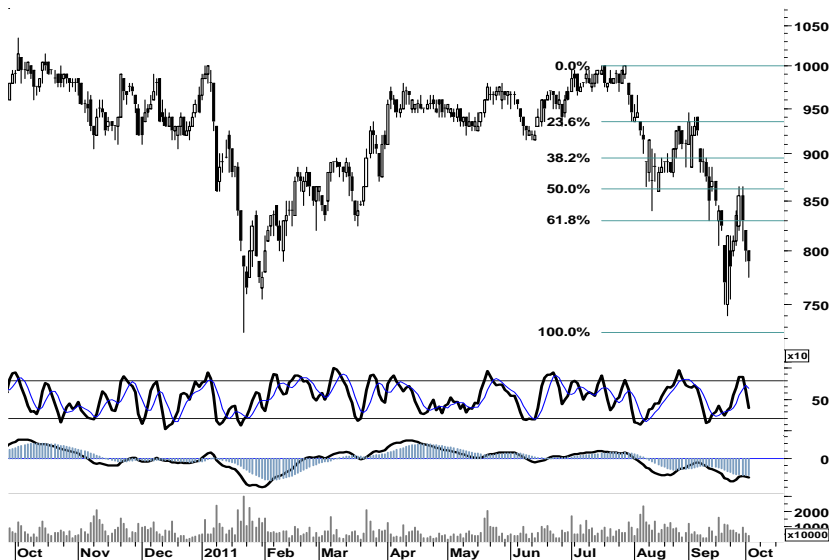
Dengan mulai terbatasnya ruang tekanan serta perlawanan aksi beli yang mencoba mendorong BBRI melakukan penetrasi retracement 38% di level 5.300, didukung pula adanya peningkatan volume perdagangan membuka peluang bagi BBRI untuk kembali menguji pergerakan positif menuju resistensi 5.600.

S1	S2	R1	R2
5,150	5,000	5,600	5,750



Berada pada area oversold dan indikasi terbatasnya ruang pelemahan, membuka peluang bagi ITMG untuk melakukan technical rebound pada support-support 34.050, 33.800.

S1	S2	R1	R2
34,050	33,500	36,700	37,250



Kondisi berimbang pada pivot support, membuka peluang yang sama besarnya bagi SMGR untuk bergerak positif dengan basis support 7.800, untuk selanjutnya menguji interval harga 7.800-8.200

Waspada pula potensi berlanjutnya tekanan menguji kekuatan support 7.650.

S1	S2	R1	R2
7,800	7,650	8,150	8,300



Untuk dapat bertahan pada area positif MA200, TLKM diharapkan mampu bertahan pada support 7.350 dan bergerak menguji resistensi 7.750.

S1	S2	R1	R2
7,350	7,250	7,750	7,850

TRADE DATA

JCI (IHSG) 3,269.5 -79.3 -2.37%

YTD (Rp)	-11.7%	Volume (m) :	4,222
YTD (USD)	-9.2%	Nilai (Rpbn) :	3,328
Moving Avg 20day	3,660	Mkt Cap (Rpbn) :	3,439
Moving Avg 50day	3,853	Market P/E (x) :	16.2
Moving Avg 200day	3,724	Market Div. Yield (%) :	2.4

Indonesia & Sectors +/- (%) YTD (%)

MSCI Indonesia	4,007.1	-96.8	-2.36	-11.86
JII	452.5	-9.5	-2.06	-15.09
LQ45	569.5	-14.8	-2.53	-13.90
JAKFIN Index	421.5	-13.5	-0.03	-9.69
JAKINFR Index	660.3	-6.0	-0.01	-19.40
JAKMINE Index	2,221.2	-117.0	-0.05	-32.16
JAKCONS Index	1,148.7	-24.3	-0.02	4.94
JAKTRAD Index	460.6	-9.0	-0.02	-2.85
JAKMIND Index	1,060.0	-3.2	-0.00	9.61
JAKBIND Index	333.6	-5.3	-0.02	-13.86
JAKPROP Index	186.2	-6.5	-0.03	-8.33
JAKAGRI Index	1,828.2	-41.3	-0.02	-19.97

Commodities +/- (%) YTD (%)

CRB Index	293.28	-3.1	-1.05	-11.88
Oil & Gas				
Crude Oil	75.67	-1.9	-2.50	-17.19
Natural Gas	3.64	0.0	0.58	-17.41
COAL (Rotterdam)	117.95	-2.1	-1.71	-10.24
COAL (Amsterdam)	117.24	-2.8	-2.30	-6.92
COAL (Australia,wk)	122.25	0.0	0.00	-0.12
Industrial Metals				
Alumunium	2,155.75	-29.5	-1.35	-12.34
Nickel	18,750	-275	-1.45	-24.24
Tin	20,995	495	2.41	-21.95
Precious Metal				
Gold	1,616.00	-41.7	-2.52	13.69
Silver	29.84	-1.0	-3.10	-3.46
Soft Commodities				
CPO (Malaysia)	2,825.00	-35.0	-1.22	-25.93
CPO (Netherlands)	975.00	-25.0	-2.50	-24.12
Rubber	3,854.97	5.3	0.14	-22.81
Corn	587.75	-4.8	-0.80	-6.56
Wheat	604.00	-15.5	-2.50	-23.95
Soybeans	1,160.00	-17.5	-1.49	-16.77
Rice (Indonesia)	7,700.00	0.0	0.00	8.45

Winners

Stock	Price	(%)	Stock	Price	(%)
TPIA	3,500	7.69	SMMA	4,000	-11.11
IMAS	10,600	5.47	BUMI	1,610	-10.06
FAST	9,250	5.11	PTBA	14,400	-8.28
TRIO	800	3.90	BBNI	3,175	-7.30
TBIG	1,980	2.59	BDMN	3,975	-7.02
CPIN	2,225	2.30	UNTR	19,350	-3.97
KLBF	3,100	1.64	BMRI	5,550	-3.48
BMTR	770	1.32	GGRM	51,100	-2.67
MYOR	12,150	1.25	UNVR	15,750	-2.17
TLKM	7,450	0.68	BBCA	7,200	-2.04

Losers

Stock	Price	(%)	Stock	Price	(%)
SMMA	4,000	-11.11	BUMI	1,610	-10.06
BUMI	1,610	-10.06	PTBA	14,400	-8.28
PTBA	14,400	-8.28	BBNI	3,175	-7.30
BBNI	3,175	-7.30	BDMN	3,975	-7.02
BDMN	3,975	-7.02	UNTR	19,350	-3.97
UNTR	19,350	-3.97	BMRI	5,550	-3.48
BMRI	5,550	-3.48	GGRM	51,100	-2.67
GGRM	51,100	-2.67	UNVR	15,750	-2.17
UNVR	15,750	-2.17	BBCA	7,200	-2.04
BBCA	7,200	-2.04			

Regional Indices +/- (%) YTD (%)

MXWO	MSCI Word	1,074.5	-0.3	-0.03	-16.06
SPX	S&P 500	1,124.0	24.7	2.25	-10.63
US					
Dow Jones Industrial		10,808.7	153.4	1.44	-6.64
Nasdaq	US	2,404.8	69.0	2.95	-9.35
Europe					
EURO 50	Europe	217.5	-6.2	-2.75	-21.16
FTSE	London	4,944.4	-131.1	-2.58	-16.20
DAX	German	5,216.7	-160.0	-2.98	-24.55
CAC	France	2,850.6	-76.3	-2.61	-25.08
SMI	Swiss	5,444.6	-51.1	-0.93	-15.41
BRIC					
BOVESPA	Brazil	50,686.3	-105.2	-0.21	-26.86
MICEX	Russia	1,267.8	-76.9	-5.72	-24.89
SENSEX	India	15,864.9	-286.6	-1.77	-22.64
NIFTY	India	4,772.2	-77.4	-1.60	-22.21
SHCOMP	China	2,359.2	0.0	0.00	-15.98
SZCOMP	China	1,004.5	0.0	0.00	-22.18

Developed ASIA

Nikkei	Japan	8,456.1	-89.4	-1.05	-17.33
TPX	Japan	736.2	-10.9	-1.46	-18.09
HIS	Hong kong	16,250.3	-571.9	-3.40	-29.46
KOSPI	S.Korea	1,706.2	-63.5	-3.59	-16.81
TAIEX	Taiwan	7,047.9	33.9	0.48	-21.45
FSSTI	Singapore	2,531.0	-90.4	-3.45	-20.66

ASEAN

SET	Thailand	855.5	-13.9	-1.59	-17.17
PCOMP	Philippines	3,829.9	-35.9	-0.93	-8.84
KLCI	Malaysia	1,361.4	-6.1	-0.45	-10.37
VNINDEX	Vietnam	418.2	-3.9	-0.93	-13.72

Currency +/- (%) YTD (%)

EURUSD	Euro	1.335	0.017	1.31	-0.26
GBPUSD	United Kingdom	1.549	0.006	0.36	-0.79
USDCHF	Switzerland	0.917	-0.005	-0.55	-2.00
USDCAD	Canada	1.051	-0.003	-0.32	5.34
AUDUSD	Australia	0.957	0.005	0.47	-6.46
NZDUSD	New Zealand	0.760	0.007	0.98	-2.58
USDJPY	Japan	76.8	0.180	0.23	-5.31
USDCNY	China	6.364	0.004	0.06	-3.68
USDHKD	Hongkong	7.786	-0.002	-0.03	0.17
USDSGD	Singapore	1.308	-0.012	-0.87	1.92
Rupiah	Indonesia	9,004.0	101.000	1.13	0.09

Value (Rpbn) Volume (Lot) Freq (x)

BUMI	456,825	BNBR	1,320,663	BUMI	8,162
BBRI	412,708	ENRG	639,299	BBNI	4,866
BMRI	323,119	ELTY	588,027	BBRI	4,640
ASII	287,071	BUMI	542,979	BMRI	3,945
TLKM	285,676	KIJA	288,309	ANTM	3,599
BBNI	259,938	DEWA	268,627	ASII	3,323
HRUM	152,961	LPKR	182,509	ADRO	3,095
PGAS	112,179	BBNI	160,314	CPIN	3,089
ADRO	103,412	BBRI	155,539	INDF	2,731
BBCA	100,375	ASRI	137,000	PGAS	2,555

Code	Last	Ytd Chg(%)	H-5 Chg (%)	Rekomendasi	STO	RSI	MACD	Bollinger Band		Support			Resistance			H-5	
								Top	Bottom	1	2	3	1	2	3	Highest	Lowest
AALI	17,000	-36.57	-12.37	Sp.Buy	15.7	19.9	(1,031.8)	20,150	15,900	16,750	16,500	16,000	17,500	18,000	18,250	19,700	17,000
ACES	3,100	8.77	-3.13	Trading	58.3	37.8	(22.9)	3,425	3,075	3,075	3,025	2,950	3,200	3,275	3,325	3,350	3,025
ADRO	1,530	-42.80	-6.13	Trading	42.9	28.1	(156.8)	1,780	1,480	1,480	1,430	1,360	1,600	1,670	1,720	1,780	1,500
AISA	600	-23.08	-11.76	Trading	20.0	25.3	(26.2)	700	575	580	560	540	620	640	660	700	580
ANTM	1,420	-42.63	-3.40	Trading	29.8	26.0	(127.4)	1,510	1,380	1,390	1,350	1,320	1,460	1,490	1,530	1,540	1,380
ASII	58,700	7.90	-3.06	Sp.Buy	37.9	37.1	(2,142.8)	65,300	56,150	57,850	57,000	56,000	59,700	60,700	61,550	65,600	58,000
BBCA	7,200	11.63	-4.00	Trading	43.9	37.8	(177.4)	7,800	7,050	7,100	6,950	6,850	7,350	7,450	7,600	7,800	7,050
BBNI	3,175	-16.45	-10.56	Trading	48.6	32.6	(169.4)	3,875	3,050	3,050	2,925	2,700	3,400	3,625	3,750	3,750	3,125
BBRI	5,300	2.42	-7.83	Sp.Buy	32.7	35.8	(269.6)	6,150	5,000	5,150	5,000	4,850	5,450	5,600	5,750	6,100	5,150
BDMN	3,975	-27.73	-13.11	Sp.Buy	23.3	28.6	(220.5)	4,775	3,825	3,875	3,775	3,550	4,200	4,425	4,525	4,650	3,975
BISI	880	-52.94	-16.19	Trading	23.9	21.4	(83.2)	1,050	850	850	820	770	930	980	1,010	1,060	870
BMRI	5,550	-13.95	-6.72	Sp.Buy	34.9	36.8	(313.1)	6,650	5,250	5,450	5,350	5,150	5,750	5,950	6,050	6,550	5,500
BSDE	780	-11.36	-2.50	Trading	51.2	35.3	(47.7)	885	760	760	740	720	800	820	840	890	750
BTEL	295	25.53	-10.61	Trading	47.8	22.8	(9.4)	343	289	282	269	252	312	329	342	335	285
BUMI	1,610	-48.48	-24.24	Sp.Buy	11.8	19.6	(243.2)	2,110	1,500	1,550	1,490	1,370	1,730	1,850	1,910	2,150	1,600
BWPT	990	-24.43	-7.48	Trading	37.5	26.2	(42.3)	1,085	980	980	965	940	1,020	1,045	1,060	1,080	990
ELTY	99	-38.51	-16.10	Trading	32.8	24.0	(10.9)	118	94	95	90	87	103	106	111	119	93
EXCL	4,525	-13.81	-8.59	Trading	41.7	34.9	(147.2)	5,150	4,425	4,450	4,375	4,250	4,650	4,775	4,850	5,050	4,500
GGRM	51,100	24.48	-0.97	Trading	59.2	42.1	(838.7)	53,300	50,150	50,450	49,800	48,450	52,450	53,800	54,450	54,000	49,700
HEXA	7,000	-3.45	-4.11	OverBought	69.6	40.1	(222.0)	7,450	6,900	6,900	6,800	6,600	7,200	7,400	7,500	7,450	6,750
HRUM	6,050	-35.98	-15.38	Sp.Buy	29.4	26.2	(524.3)	7,550	5,750	5,800	5,500	5,100	6,500	6,900	7,200	7,400	5,900
INCO	2,600	-47.74	-13.33	Sp.Buy	23.3	22.6	(269.5)	3,150	2,500	2,475	2,350	2,175	2,775	2,950	3,075	3,075	2,525
INDF	4,625	-6.57	-1.60	Trading	60.0	35.8	(335.0)	5,125	4,550	4,525	4,400	4,225	4,825	5,000	5,125	5,100	4,550
INDY	2,200	-56.86	-8.33	Sp.Buy	28.2	21.1	(274.4)	2,375	2,125	2,175	2,150	2,100	2,250	2,300	2,325	2,450	2,150
INTP	12,000	-25.23	-6.61	Trading	39.6	37.2	(570.9)	14,450	11,450	11,750	11,500	10,950	12,550	13,100	13,350	14,250	12,000
ISAT	4,775	-12.39	-10.75	Sp.Buy	10.5	32.5	(118.6)	5,575	4,575	4,650	4,525	4,350	4,950	5,125	5,250	5,750	4,700
ITMG	34,600	-36.28	-13.28	Sp.Buy	10.9	27.4	(2,168.0)	41,850	32,200	34,050	33,500	32,450	35,650	36,700	37,250	40,900	34,500
JSMR	3,650	2.82	-3.31	Trading	47.7	40.6	(54.2)	4,100	3,500	3,575	3,475	3,400	3,750	3,825	3,925	4,050	3,550
KLBF	3,100	-6.77	0.00	Trading	53.6	41.9	(85.6)	3,350	2,975	3,025	2,925	2,875	3,175	3,225	3,325	3,350	2,975
LSIP	1,740	-31.50	-8.90	Sp.Buy	34.9	29.8	(120.0)	2,120	1,640	1,710	1,680	1,620	1,800	1,860	1,890	2,100	1,730
MAPI	4,000	44.14	-10.61	Trading	26.4	40.0	(68.5)	4,550	3,825	3,900	3,800	3,675	4,125	4,250	4,350	4,575	3,900
PGAS	2,525	-43.58	-4.72	Trading	43.1	37.6	(162.5)	2,850	2,400	2,450	2,375	2,300	2,600	2,675	2,750	2,850	2,425
PTBA	14,400	-39.87	-6.80	Trading	52.1	29.2	(1,022.4)	17,250	14,000	13,850	13,300	12,350	15,350	16,300	16,850	16,800	14,200
RALS	640	-25.58	-8.57	Trading Sell	15.8	19.7	(33.0)	705	615	20,870	20,870	20,870	20,870	20,870	20,870	710	620
SGRO	2,600	-20.00	-8.77	Trading	41.9	27.2	(196.3)	2,975	2,550	2,500	2,400	2,275	2,725	2,850	2,950	2,950	2,525
SMCB	1,700	-23.60	-1.73	Trading	47.2	32.1	(73.5)	1,790	1,680	1,680	1,660	1,630	1,730	1,760	1,780	1,800	1,690
SMGR	7,900	-19.80	-2.47	Trading	36.4	37.5	(266.7)	8,600	7,650	7,800	7,650	7,550	8,050	8,150	8,300	8,650	7,750
SMRA	880	-18.52	-14.56	Sp.Buy	20.0	24.0	(75.9)	1,060	830	865	850	825	905	930	945	1,050	870
TINS	1,630	-42.81	-9.94	Trading	21.5	24.7	(143.5)	1,850	1,560	1,590	1,550	1,490	1,690	1,750	1,790	1,860	1,610
TLKM	7,450	-6.88	2.76	Trading	56.7	51.8	4.2	7,650	7,300	7,350	7,250	7,100	7,600	7,750	7,850	7,700	7,250
UNTR	19,350	-20.37	-8.29	Trading	40.3	31.7	(996.0)	22,850	18,400	18,550	17,750	16,550	20,550	21,750	22,550	22,250	18,950
UNVR	15,750	-1.87	0.96	OverBought	72.9	46.8	(127.2)	16,650	15,350	15,600	15,400	15,300	15,900	16,000	16,200	16,500	15,300

S1 = Support 1 S2 = Support 2 S3 = Support 3
 R1 = Resisten 1 R2 = Resisten 2 R2 = Resisten 2
 STO = Stochastic Oscillator
 RSI = Relative Strength Index
 MACD = Moving Average Convergence Divergence
 H-5 = 5 hari sebelumnya

RESEARCH TEAM

Andrian Tanuwijaya	Equity Analyst	(andrian.tanuwijaya@trimegah.com)
Hanel Topada Era Tania	Equity Analyst	(hanel.tania@trimegah.com)
Paul Raymond Widjaja	Equity Analyst	(paul.widjaja@trimegah.com)
Michele Gabriela	Equity Analyst	(michele.gabriela@trimegah.com)
T Hedy Arifien	Technical Analyst	(hedy@trimegah.com)
Rovandi	Research Assistant	(rovandi@trimegah.com)

EQUITY CAPITAL MARKET TEAM

Nathanael Benny Prasetyo	Head of Retail ECM	(benny.prasetyo@trimegah.com)
Windra Djulnaily	Pluit, Jakarta	(windra.djulnaily@trimegah.com)
Ariawan Anwar	Artha Graha, Jakarta	(ariawan.anwar@trimegah.com)
Ferry Zabur	Kelapa Gading, Jakarta	(ferry.zabur@trimegah.com)
Wirjawan Joesoef	Mangga Dua, Jakarta	(iwan@trimegah.com)
Lukman Abdul Azis	Kebon Jeruk, Jakarta	(lukman@trimegah.com)
Untung Wijaya	Semarang, Jawa Tengah	(untung.wijaya@trimegah.com)
Sonny Muljadi	Surabaya, Jawa Timur	(sonny.muljadi@trimegah.com)
Ni luh Ketut Sri Agustini	Denpasar, Bali	(sri.agustini@trimegah.com)
Philip Fernando Suwandi	Makassar, Sulawesi Selatan	(philip.fs@trimegah.com)
agus.jatmiko	Balikpapan, Kalimantan Timur	(agus.jatmiko@trimegah.com)
Asep Saepudin	Bandung, Jawa Barat	(asep.saepudin@trimegah.com)
Ariffianto	Cirebon, Jawa Barat	(ariffianto@trimegah.com)
Very Wijaya	Medan, Sumatera Utara	(very.wijaya@trimegah.com)
Tantie Rivi Watie	Pekanbaru, Riau	(tantierw@trimegah.com)
Agus Bambang Suseno	Solo, Jawa Tengah	(agus.suseno@trimegah.com)
Untung Wijaya	Yogyakarta, Jawa Tengah	(untung.wijaya@trimegah.com)
Donny Kristanto Setiadi	Palembang, Sumatra Selatan	(donny.kristanto@trimegah.com)
Rr. Putri Ayu Erikusuma	Malang, Jawa Timur	(putri.ayu@trimegah.com)

PT Trimegah Securities Tbk
18th Fl, Artha Graha Building
Jl. Jend. Sudirman Kav. 52-53
Jakarta 12190, INDONESIA
Tel : (6221) 2924 9088 Fax : (6221) 2924 9163

DISCLAIMER

This report has been prepared by PT Trimegah Securities Tbk on behalf of itself and its affiliated companies and is provided for information purposes only. Under no circumstances is it to be used or considered as an offer to sell, or a solicitation of any offer to buy. This report has been produced independently and the forecasts, opinions and expectations contained herein are entirely those of Trimegah Securities.

While all reasonable care has been taken to ensure that information contained herein is not untrue or misleading at the time of publication, Trimegah Securities makes no representation as to its accuracy or completeness and it should not be relied upon as such. This report is provided solely for the information of clients of Trimegah Securities who are expected to make their own investment decisions without reliance on this report. Neither Trimegah Securities nor any officer or employee of Trimegah Securities accept any liability whatsoever for any direct or consequential loss arising from any use of this report or its contents. Trimegah Securities and/or persons connected with it may have acted upon or used the information herein contained, or the research or analysis on which it is based, before publication. Trimegah Securities may in future participate in an offering of the company's equity securities.