

IHSG 3.451,1 25,4 0,74%

Ulisan Pasar



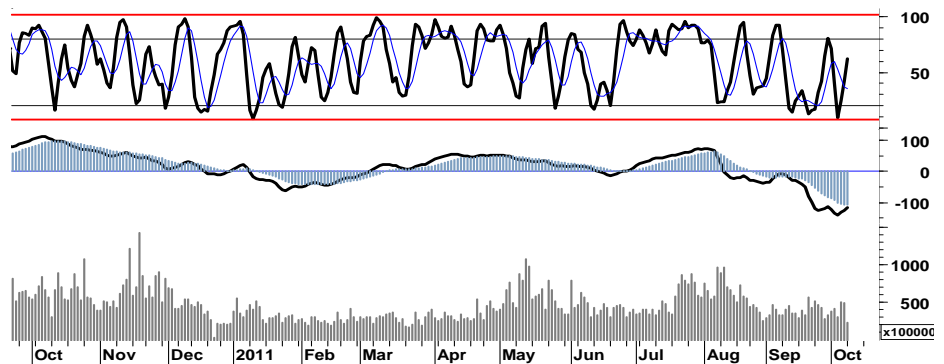
Perdagangan pada Indeks Harga Saham Gabungan di awal pekan kemarin diakhiri dengan membukukan penguatan tipis sebesar 0,74%, ditengah minimnya sentimen positif serta para investor yang masih cenderung mewaspadaai dan juga mencermati perkembangan krisis utang yang terjadi di Eropa.

Aksi beli selektif pada sejumlah saham unggulan seperti BBRI, BMRI, BBNI, ASII, BBCA, dan GGRM merupakan kontributor terhadap penguatan 25 poin pada IHSG. Pada saat yang bersamaan, para pelaku asing mencatatkan nilai penjualan bersih sebesar Rp5,1 miliar.

Ekspektasi indikasi positif dari rencana regulator Jerman dan Perancis dalam upaya meredam gejolak dari krisis utang di Eropa, berhasil memberikan warna cerah terhadap pergerakan indeks pada bursa-bursa utama Eropa yang di akhir perdagangan kemarin ditutup menguat DAX 3,0%, CAC 2,1%. Sentimen positif tersebut juga mewarnai pergerakan

indeks bursa di Amerika yang turut bergerak menguat DJI 3,0%, Nasdaq 3,5%, dan S&P500 3,4%.

Walaupun tidak menutup kemungkinan adanya lanjutan pelemahan dari IHSG sebagaimana tercermin pada sloping negatif MA 50 dan MA200, yang mengindikasikan belum terkonfirmasi signal pemulihan indikator jangka menengah/panjang. Diharapkan sentimen positif yang ada, dapat memberikan angin segar terhadap IHSG pada perdagangan hari ini. Setidaknya IHSG memiliki peluang untuk menguji penetrasi resistensi 3.490, serta menguji beberapa area resistensi di level-level 3.520 dan 3.550.



Dalam kondisi tersebut, ditambah pula dengan akan dimulainya musim publikasi laporan keuangan para emiten. Pembelian selektif pada sektor perbankan serta saham-saham dari para emiten yang memiliki orientasi domestik, menjadi sorotan dan pantauan para analis kami.

S1	S2	R1	R2
3,425	3,400	3,465	3,480

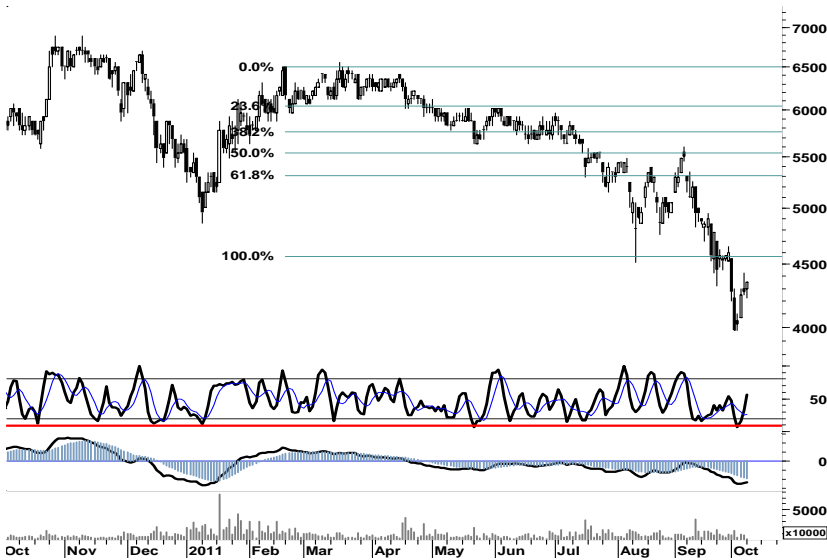
## Saham Pilihan

Saham	Harga (Rp)	Rekomendasi	Stochastic	RSI	BB Top	BB Bottom	S1	S2	R1	R2
BBNI	3,450	Trading	55.74	42.18	3,625	3,150	3,375	3,300	3,550	3,625
BDMN	4,350	Trading	55.88	41.32	4,550	3,950	4,275	4,200	4,450	4,525
BWPT	970	StrongBuy	19.35	24.99	990	955	955	940	1,020	1,035
HEXA	7,250	Trading	58.33	44.82	7,750	6,900	7,100	6,950	7,750	7,900
INTP	12,900	Trading	59.84	45.39	13,850	11,700	12,650	12,400	13,400	13,650
PGAS	2,525	Trading	48.65	38.65	2,600	2,500	2,500	2,450	2,600	2,650



Indikasi signal positif leading maupun lagging indicator diharapkan mampu mendorong BBNI melanjutkan penguatan untuk menembus resistensi 3.475 pada retracement 24%, selanjutnya menguji resistensi 3.550.

S1	S2	R1	R2
3,375	3,300	3,550	3,625



Meskipun masih tertahan pada resistensi 4.550, indikasi signal positif leading indicator serta arus distribusi volume perdagangan yang mulai tumbuh, membuka peluang bagi BDMN untuk kembali pada area positif trading dan melakukan penetrasi 4.550 di perdagangan hari ini.

S1	S2	R1	R2
4,275	4,200	4,450	4,525



Support kuat harga 950, indikasi positif stochastic yang mencoba memasuki area trading positif harga 1.020 - 1.100 yang merupakan target pertumbuhan harga selanjutnya.

S1	S2	R1	R2
955	940	1,020	1,035

HEXA

7,250

Trading



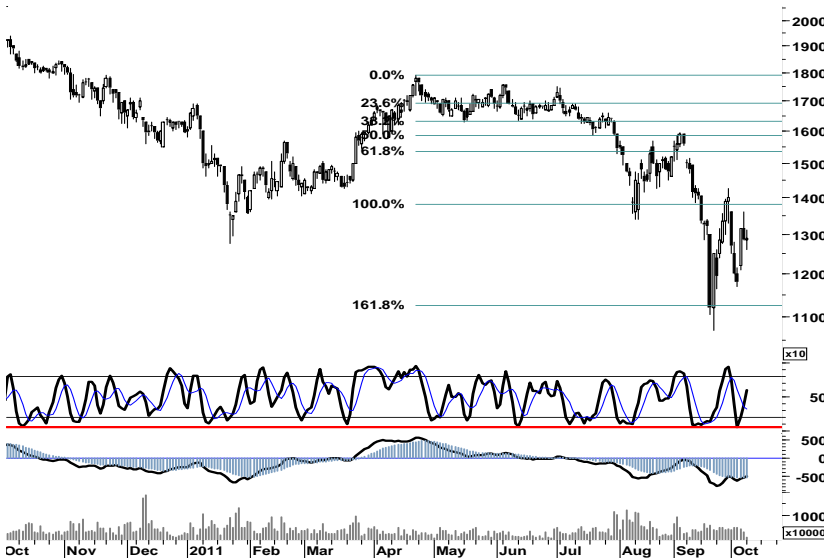
Sentimen positif regional, diharapkan mampu memberikan warna positif bagi HEXA untuk kembali menguji resistensi pada celah 7.750.

S1	S2	R1	R2
7,100	6,950	7,750	7,900

INTP

12,900

Trading



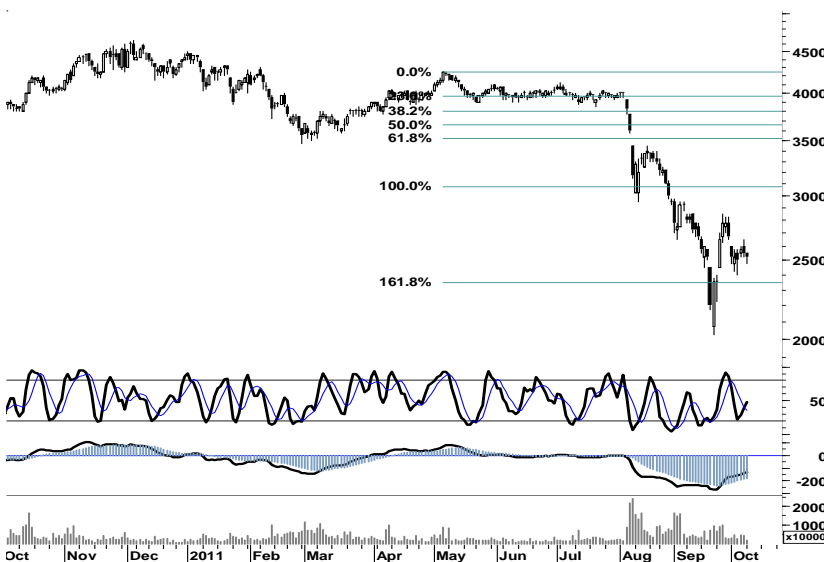
Kondisi berimbang pada pivot support, membuka peluang yang sama besarnya bagi INTP untuk menguji resistensi harga pada level 13.800. Setidaknya momentum positif hari ini, dapat memberikan ruang bagi INTP melakukan penetrasi 13.400.

S1	S2	R1	R2
12,650	12,400	13,400	13,650

PGAS

2,525

Trading



PGAS diharapkan mampu bertumpu pada support 2.450, untuk dapat bertahan pada area positif perdagangan.

Setidaknya perdagangan hari ini, PGAS memiliki peluang untuk bergerak menguji resistensi 2.600.

S1	S2	R1	R2
2,500	2,450	2,600	2,650

## TRADE DATA

### JCI (IHSG) 3,451.1 25.4 0.74%

YTD (Rp)	-6.8%	Volume (m) :	2,298
YTD (USD)	-5.8%	Nilai (Rpbn) :	3,328
Moving Avg 20day	3,545	Mkt Cap (Rpbn) :	3,439
Moving Avg 50day	3,800	Market P/E (x) :	16.2
Moving Avg 200day	3,717	Market Div. Yield (%) :	2.4

### Indonesia & Sectors +/- (%) YTD (%)

MSCI Indonesia	4,272.4	47.3	1.12	-6.03
JII	473.7	1.5	0.31	-11.12
LQ45	606.0	5.7	0.96	-8.38
JAKFIN Index	459.8	9.6	0.02	-1.47
JAKINFR Index	660.3	-0.2	-0.00	-19.40
JAKMINE Index	2,367.2	-2.2	-0.00	-27.70
JAKCONS Index	1,198.9	-3.9	-0.00	9.52
JAKTRAD Index	484.0	1.6	0.00	2.10
JAKMIND Index	1,143.6	15.6	0.01	18.26
JAKBIND Index	344.4	2.8	0.01	-11.08
JAKPROP Index	197.9	1.5	0.01	-2.57
JAKAGRI Index	1,861.2	-11.9	-0.01	-18.52

### Commodities +/- (%) YTD (%)

CRB Index	308.66	5.1	1.69	-7.25
<b>Oil &amp; Gas</b>				
Crude Oil	85.41	2.4	2.93	-6.53
Natural Gas	3.54	0.1	1.72	-19.61
COAL (Rotterdam)	119.40	0.5	0.42	-9.13
COAL (Amsterdam)	119.30	0.3	0.27	-5.28
COAL (Australia,wk)	120.55	-1.7	-1.39	-1.51
<b>Industrial Metals</b>				
Aluminium	2,237.75	29.3	1.32	-9.01
Nickel	19,380	475	2.51	-21.70
Tin	23,050	100	0.44	-14.31
<b>Precious Metal</b>				
Gold	1,670.80	35.0	2.14	17.55
Silver	31.98	1.0	3.18	3.46
<b>Soft Commodities</b>				
CPO (Malaysia)	2,798.00	20.0	0.72	-26.64
CPO (Netherlands)	1,000.00	42.5	4.44	-22.18
Rubber	4,041.47	2.6	0.07	-19.07
Corn	605.00	5.0	0.83	-3.82
Wheat	611.50	4.0	0.66	-23.01
Soybeans	1,177.50	19.3	1.66	-15.52
Rice (Indonesia)	7,700.00	0.0	0.00	8.45

### Winners

Stock	Price	(%)	Stock	Price	(%)
TOWR	10,250	19.88	TSPC	2,550	-3.77
BORN	910	5.81	TPIA	3,375	-3.57
BBRI	6,050	4.31	AMRT	3,800	-2.56
BMRI	6,250	4.17	SMAR	5,900	-2.48
CPIN	2,375	3.26	AALI	16,700	-2.34
BBNI	3,450	2.99	UNVR	15,600	-1.89
BDMN	4,350	1.75	BYAN	19,550	-1.76
ASII	64,150	1.42	PTBA	13,850	-1.07
GGRM	55,600	1.09	PGAS	2,525	-0.98
BBCA	7,500	0.67	TLKM	7,200	-0.69

### Losers

Stock	Price	(%)	Stock	Price	(%)
TSPC	2,550	-3.77	TPIA	3,375	-3.57
TPIA	3,375	-3.57	AMRT	3,800	-2.56
AMRT	3,800	-2.56	SMAR	5,900	-2.48
SMAR	5,900	-2.48	AALI	16,700	-2.34
AALI	16,700	-2.34	UNVR	15,600	-1.89
UNVR	15,600	-1.89	BYAN	19,550	-1.76
BYAN	19,550	-1.76	PTBA	13,850	-1.07
PTBA	13,850	-1.07	PGAS	2,525	-0.98
PGAS	2,525	-0.98	TLKM	7,200	-0.69
TLKM	7,200	-0.69			

### Regional Indices +/- (%) YTD (%)

MXWO	MSCI World	1,156.5	30.4	2.70	-9.65
SPX	S&P 500	1,194.9	39.4	3.41	-4.99
<b>US</b>					
Dow Jones Industrial		11,433.2	330.1	2.97	-1.25
Nasdaq	US	2,566.1	86.7	3.50	-3.27
<b>Europe</b>					
EURO 50	Europe	235.9	3.9	1.70	-14.46
FTSE	London	5,399.0	95.6	1.80	-8.49
DAX	Germany	5,847.3	171.6	3.02	-15.43
CAC	France	3,161.5	65.9	2.13	-16.91
SMI	Swiss	5,718.6	66.3	1.17	-11.15
<b>BRIC</b>					
BOVESPA	Brazil	53,273.1	2,029.5	3.96	-23.13
MICEX	Russia	1,380.9	29.4	2.18	-18.20
SENSEX	India	16,557.2	324.7	2.00	-19.27
NIFTY	India	4,979.6	91.6	1.87	-18.83
SHCOMP	China	2,344.8	-14.4	-0.61	-16.50
SZCOMP	China	997.8	-6.7	-0.66	-22.70

### Developed ASIA

Nikkei	Japan	8,605.6	0.0	0.00	-15.87
TPX	Japan	741.6	0.0	0.00	-17.50
HIS	Hong kong	17,711.1	4.1	0.02	-23.11
KOSPI	S.Korea	1,766.4	6.7	0.38	-13.87
TAIEX	Taiwan	7,212.0	0.0	0.00	-19.62
FSSTI	Singapore	2,668.3	28.0	1.06	-16.36

### ASEAN

SET	Thailand	923.2	14.0	1.54	-10.61
PCOMP	Philippines	4,040.6	31.3	0.78	-3.82
KLCI	Malaysia	1,397.0	-3.0	-0.21	-8.02
VNINDEX	Vietnam	419.7	1.7	0.41	-13.41

### Currency +/- (%) YTD (%)

EURUSD	Euro	1.364	0.026	1.97	1.93
GBPUSD	United Kingdom	1.567	0.011	0.68	0.36
USDCHF	Switzerland	0.904	-0.024	-2.53	-3.37
USDCAD	Canada	1.026	-0.014	-1.32	2.79
AUDUSD	Australia	0.999	0.022	2.25	-2.39
NZDUSD	New Zealand	0.784	0.014	1.79	0.47
USDJPY	Japan	76.7	-0.050	-0.07	-5.47
USDCNY	China	6.348	-0.012	-0.19	-3.92
USDHKD	Hongkong	7.781	-0.001	-0.02	0.10
USDSGD	Singapore	1.275	-0.022	-1.72	-0.65
Rupiah	Indonesia	8,950.0	-15.000	-0.17	-0.51

### Value

Value (Rpbn)	Volume (Lot)	Freq (x)
ASII 250,865	KIJA 670,505	KIJA 3,693
BUMI 178,478	ENRG 354,681	STAR 3,664
BMRI 162,308	BNBR 337,167	TMPI 3,614
BBRI 122,959	BUMI 185,152	BUMI 3,221
TLKM 119,793	STAR 159,982	APIC 2,975
BBCA 58,122	DEWA 154,827	BMRI 2,357
TRAM 57,358	LPKR 154,306	MNCN 2,128
PTBA 52,102	TRAM 152,442	ASII 2,004
KIJA 50,879	ELTY 145,572	BBRI 1,869
LPKR 47,513	APIC 142,853	TLKM 1,576

Code	Last	Ytd Chg(%)	H-5 Chg (%)	Rekomendasi	STO	RSI	MACD	Bollinger Band		Support			Resistance			H-5	
								Top	Bottom	1	2	3	1	2	3	Highest	Lowest
AALI	16,700	-37.69	-3.47	Accumulate	25.2	24.3	(1,261.8)	17,700	16,450	16,400	16,100	15,550	17,250	17,800	18,100	18,800	16,550
ACES	3,400	19.30	3.82	OverBought	76.0	55.2	7.7	3,650	3,050	3,400	3,400	3,400	3,400	3,400	3,400	3,525	3,050
ADRO	1,670	-37.57	3.73	OverBought	66.3	38.2	(132.8)	1,800	1,510	1,650	1,620	1,600	1,700	1,720	1,750	1,760	1,500
AISA	660	-15.38	6.45	OverBought	74.3	44.3	(23.9)	725	585	655	650	645	665	670	675	700	580
ANTM	1,500	-39.39	6.38	OverBought	66.0	36.0	(107.6)	1,550	1,410	1,490	1,470	1,460	1,520	1,530	1,550	1,550	1,380
ASII	64,150	17.92	8.82	OverBought	71.2	51.0	(1,479.2)	67,200	56,750	62,750	61,350	60,150	65,350	66,550	67,950	65,100	57,300
BBCA	7,500	16.28	2.04	OverBought	60.5	45.8	(149.5)	7,700	7,200	7,350	7,200	7,100	7,600	7,700	7,850	7,750	7,050
BBNI	3,450	-9.21	0.73	Trading	55.7	42.2	(183.7)	3,625	3,150	3,375	3,300	3,250	3,500	3,550	3,625	3,600	3,125
BBRI	6,050	16.91	14.15	OverBought	74.6	50.8	(183.1)	6,450	5,250	5,900	5,750	5,650	6,150	6,250	6,400	6,300	5,150
BDMN	4,350	-20.91	1.75	Trading	55.9	41.3	(222.8)	4,550	3,950	4,275	4,200	4,150	4,400	4,450	4,525	4,550	3,975
BISI	880	-52.94	-7.37	Accumulate	31.4	28.6	(87.1)	950	850	870	860	840	900	920	930	970	870
BMRI	6,250	-3.10	8.70	OverBought	67.9	48.7	(237.4)	6,550	5,500	6,050	5,850	5,750	6,350	6,450	6,650	6,300	5,500
BSDE	810	-7.95	0.00	Trading	51.5	41.6	(42.4)	850	770	800	790	780	820	830	840	860	760
BTEL	295	25.53	-7.81	OverBought	70.5	26.4	(13.3)	311	292	290	285	280	300	305	310	325	250
BUMI	1,920	-38.56	7.26	OverBought	73.5	37.0	(214.9)	2,160	1,620	1,890	1,860	1,820	1,960	2,000	2,030	2,075	1,600
BWPT	970	-25.95	-6.73	StrongBuy	19.4	25.0	(55.2)	990	955	955	940	915	995	1,020	1,035	1,060	950
ELTY	102	-36.65	-0.97	Trading	52.7	28.5	(11.1)	106	98	101	100	98	104	106	107	109	93
EXCL	4,825	-8.10	1.05	OverBought	66.1	45.4	(132.4)	5,000	4,475	4,775	4,725	4,700	4,850	4,875	4,925	4,900	4,425
GGRM	55,600	35.44	5.90	OverBought	77.0	58.1	(39.7)	58,000	51,050	55,000	54,350	53,950	56,050	56,450	57,100	56,950	51,000
HEXA	7,250	0.00	2.11	Trading	58.3	44.8	(186.4)	7,750	6,900	7,100	6,950	6,700	7,500	7,750	7,900	7,850	6,800
HRUM	6,850	-27.51	3.01	OverBought	73.2	40.7	(441.2)	7,550	6,000	6,750	6,650	6,550	6,950	7,050	7,150	7,250	5,900
INCO	2,950	-40.70	5.36	OverBought	71.2	39.2	(242.0)	3,150	2,550	2,900	2,850	2,800	3,000	3,050	3,100	3,000	2,525
INDF	4,950	0.00	1.54	OverBought	64.2	43.8	(264.0)	5,175	4,600	4,875	4,775	4,725	5,025	5,075	5,175	5,150	4,575
INDY	2,325	-54.41	5.68	OverBought	66.7	32.6	(222.8)	2,500	2,200	2,275	2,200	2,175	2,375	2,400	2,475	2,475	2,150
INTP	12,900	-19.63	1.57	Trading	59.8	45.4	(479.9)	13,850	11,700	12,650	12,400	12,150	13,150	13,400	13,650	13,600	11,700
ISAT	4,750	-12.84	-5.00	Accumulate	23.2	34.3	(198.7)	4,825	4,700	4,725	4,700	4,650	4,800	4,850	4,875	5,150	4,625
ITMG	37,800	-30.39	5.59	OverBought	65.7	39.7	(2,047.2)	40,200	34,500	37,150	36,500	36,150	38,150	38,500	39,150	39,400	34,300
JSMR	3,750	5.63	2.04	OverBought	60.9	45.4	(50.7)	3,900	3,650	3,700	3,625	3,600	3,800	3,825	3,900	3,925	3,550
KLBF	3,375	1.50	10.66	StrongSell	81.8	53.2	(33.5)	3,525	3,125	3,325	3,275	3,225	3,425	3,475	3,525	3,450	2,975
LSIP	1,890	-25.59	3.85	Trading	45.2	41.0	(115.9)	1,960	1,730	1,850	1,810	1,790	1,910	1,930	1,970	2,000	1,730
MAPI	4,250	53.15	3.66	OverBought	68.9	45.8	(88.2)	4,450	4,000	4,225	4,200	4,150	4,300	4,350	4,375	4,375	3,900
PGAS	2,525	-43.58	0.00	Trading	48.6	38.7	(133.7)	2,600	2,500	2,500	2,450	2,425	2,575	2,600	2,650	2,650	2,400
PTBA	13,850	-42.17	-11.78	StrongBuy	13.0	29.0	(1,217.4)	14,550	13,600	13,550	13,250	12,850	14,250	14,650	14,950	16,800	13,600
RALS	660	-96.84	3.13	Trading Sell	45.5	31.3	(31.2)	700	640	20,870	20,870	20,870	20,870	20,870	20,870	730	620
SGRO	2,625	-19.23	-3.67	Accumulate	36.4	32.6	(208.3)	2,725	2,525	2,575	2,525	2,475	2,675	2,725	2,775	2,900	2,500
SMCB	1,690	-24.04	-2.31	Accumulate	25.7	35.5	(65.9)	1,800	1,650	1,690	1,690	1,680	1,700	1,710	1,710	1,810	1,690
SMGR	7,800	-20.81	-2.50	StrongBuy	19.6	38.6	(272.4)	8,150	7,600	7,700	7,600	7,450	7,950	8,100	8,200	8,400	7,700
SMRA	1,000	-7.41	8.70	OverBought	76.1	39.5	(73.8)	1,075	870	990	975	960	1,020	1,035	1,050	1,020	870
TINS	1,650	-42.11	-1.20	Trading	45.9	31.9	(145.8)	1,700	1,580	1,620	1,590	1,570	1,670	1,690	1,720	1,730	1,550
TLKM	7,200	-10.00	-2.70	OverSold	25.0	45.2	2.3	7,800	7,000	7,100	7,000	6,900	7,300	7,400	7,500	7,750	7,100
UNTR	20,750	-14.61	2.98	OverBought	64.3	41.0	(946.3)	21,650	19,200	20,450	20,150	19,950	20,950	21,150	21,450	21,300	18,950
UNVR	15,600	-2.80	-3.11	Trading	40.9	44.8	(140.7)	16,150	15,550	15,500	15,400	15,200	15,800	16,000	16,100	16,500	15,350

S1 = Support 1      S2 = Support 2      S3 = Support 3  
 R1 = Resisten 1      R2 = Resisten 2      R2 = Resisten 2  
 STO = Stochastic Oscillator  
 RSI = Relative Strength Index  
 MACD = Moving Average Convergence Divergence  
 H-5 = 5 hari sebelumnya

## RESEARCH TEAM

---

<b>Andrian Tanuwijaya</b>	Equity Analyst	(andrian.tanuwijaya@trimegah.com)
<b>Hanel Topada Era Tania</b>	Equity Analyst	(hanel.tania@trimegah.com)
<b>Paul Raymond Widjaja</b>	Equity Analyst	(paul.widjaja@trimegah.com)
<b>Michele Gabriela</b>	Equity Analyst	(michele.gabriela@trimegah.com)
<b>T Hedy Arifien</b>	Technical Analyst	(hedy@trimegah.com)
<b>Rovandi</b>	Research Assistant	(rovandi@trimegah.com)

## EQUITY CAPITAL MARKET TEAM

---

<b>Nathanael Benny Prasetyo</b>	Head of Retail ECM	(benny.prasetyo@trimegah.com)
<b>Windra Djulnaily</b>	Pluit, Jakarta	(windra.djulnaily@trimegah.com)
<b>Ariawan Anwar</b>	Artha Graha, Jakarta	(ariawan.anwar@trimegah.com)
<b>Ferry Zabur</b>	Kelapa Gading, Jakarta	(ferry.zabur@trimegah.com)
<b>Wirjawan Joesoef</b>	Mangga Dua, Jakarta	(iwan@trimegah.com)
<b>Lukman Abdul Azis</b>	Kebon Jeruk, Jakarta	(lukman@trimegah.com)
<b>Untung Wijaya</b>	Semarang, Jawa Tengah	(untung.wijaya@trimegah.com)
<b>Sonny Muljadi</b>	Surabaya, Jawa Timur	(sonny.muljadi@trimegah.com)
<b>Ni luh Ketut Sri Agustini</b>	Denpasar, Bali	(sri.agustini@trimegah.com)
<b>Philip Fernando Suwandi</b>	Makassar, Sulawesi Selatan	(philip.fs@trimegah.com)
<b>agus.jatmiko</b>	Balikpapan, Kalimantan Timur	(agus.jatmiko@trimegah.com)
<b>Asep Saepudin</b>	Bandung, Jawa Barat	(asep.saepudin@trimegah.com)
<b>Ariffianto</b>	Cirebon, Jawa Barat	(ariffianto@trimegah.com)
<b>Very Wijaya</b>	Medan, Sumatera Utara	(very.wijaya@trimegah.com)
<b>Tantie Rivi Watie</b>	Pekanbaru, Riau	(tantierw@trimegah.com)
<b>Agus Bambang Suseno</b>	Solo, Jawa Tengah	(agus.suseno@trimegah.com)
<b>Untung Wijaya</b>	Yogyakarta, Jawa Tengah	(untung.wijaya@trimegah.com)
<b>Donny Kristanto Setiadi</b>	Palembang, Sumatra Selatan	(donny.kristanto@trimegah.com)
<b>Rr. Putri Ayu Erikusuma</b>	Malang, Jawa Timur	(putri.ayu@trimegah.com)

**PT Trimegah Securities Tbk**  
18<sup>th</sup> Fl, Artha Graha Building  
Jl. Jend. Sudirman Kav. 52-53  
Jakarta 12190, INDONESIA  
Tel : (6221) 2924 9088 Fax : (6221) 2924 9163

## DISCLAIMER

This report has been prepared by PT Trimegah Securities Tbk on behalf of itself and its affiliated companies and is provided for information purposes only. Under no circumstances is it to be used or considered as an offer to sell, or a solicitation of any offer to buy. This report has been produced independently and the forecasts, opinions and expectations contained herein are entirely those of Trimegah Securities.

While all reasonable care has been taken to ensure that information contained herein is not untrue or misleading at the time of publication, Trimegah Securities makes no representation as to its accuracy or completeness and it should not be relied upon as such. This report is provided solely for the information of clients of Trimegah Securities who are expected to make their own investment decisions without reliance on this report. Neither Trimegah Securities nor any officer or employee of Trimegah Securities accept any liability whatsoever for any direct or consequential loss arising from any use of this report or its contents. Trimegah Securities and/or persons connected with it may have acted upon or used the information herein contained, or the research or analysis on which it is based, before publication. Trimegah Securities may in future participate in an offering of the company's equity securities.