

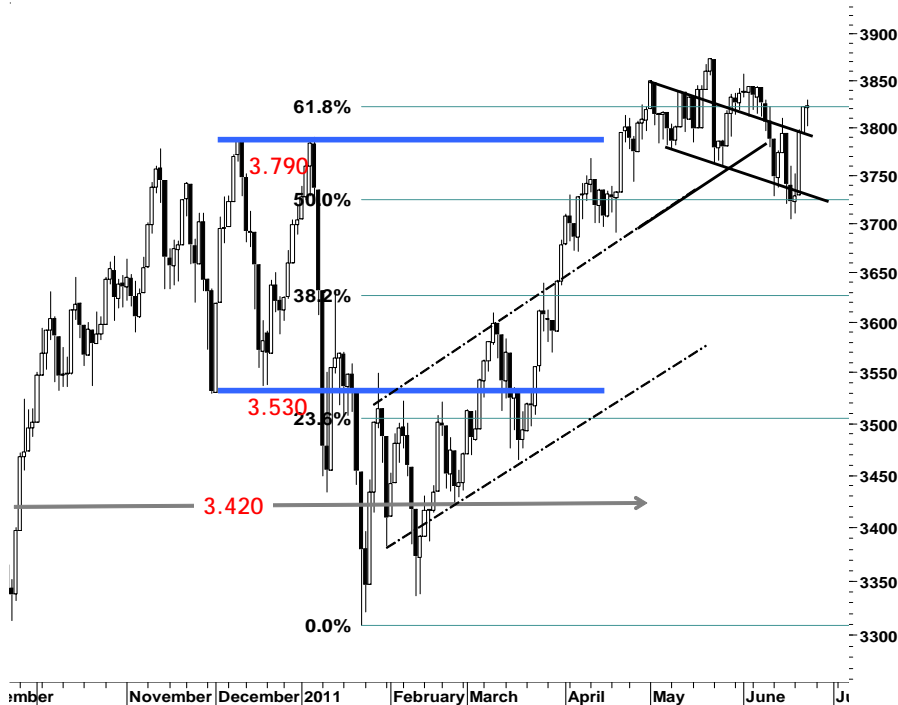
IHSG

3.823,6

1,8

0,05%

Ulisan Pasar



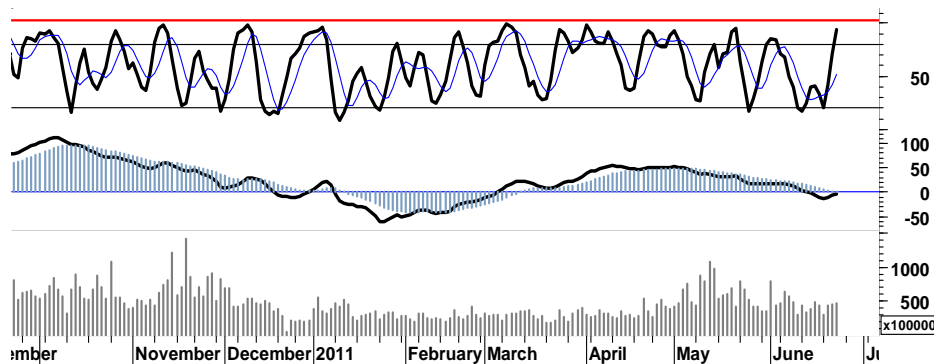
Ditengah situasi kondisi pertumbuhan perekonomian dunia yang masih belum memberikan titik terang, rata-rata pergerakan indeks di beberapa bursa utama Asia cenderung beragam. Sementara IHSG cenderung bergerak moderat dengan total transaksi sebanyak 105rb dalam rentang pergerakan sebesar 0,8%, mengakhiri sesi perdagangan kemarin dengan membukukan kenaikan tipis sebesar 1,8poin dan ditutup di level 3.823. Mencoba bertahan mempergunakan support 3.820 pada area overbought.

Bargain hunting yang dilakukan oleh para pelaku asing terhadap sejumlah saham unggulan, kembali mencatatkan nilai pembelian bersih sebesar Rp670miliar.

Beberapa catatan penting yang harus dicermati adalah, 1. dominasi sentimen regional, yang merupakan salah satu katalis penentu arah selanjutnya IHSG bergerak; 2. semakin sempit ruang bagi IHSG untuk melanjutkan rally

penguatan, pasca kenaikan yang cukup fantastis di 2 hari sebelumnya; 3. terbentuknya signal bearish candle stick. Ketiga katalis negatif tersebut dikhawatirkan akan mematahkan trend-reversal yang telah terbentuk sejak awal pekan ini, apabila titik support 3.780 gagal menahan gempuran aksi jual yang diperkirakan akan mewarnai perdagangan di akhir pekan ini.

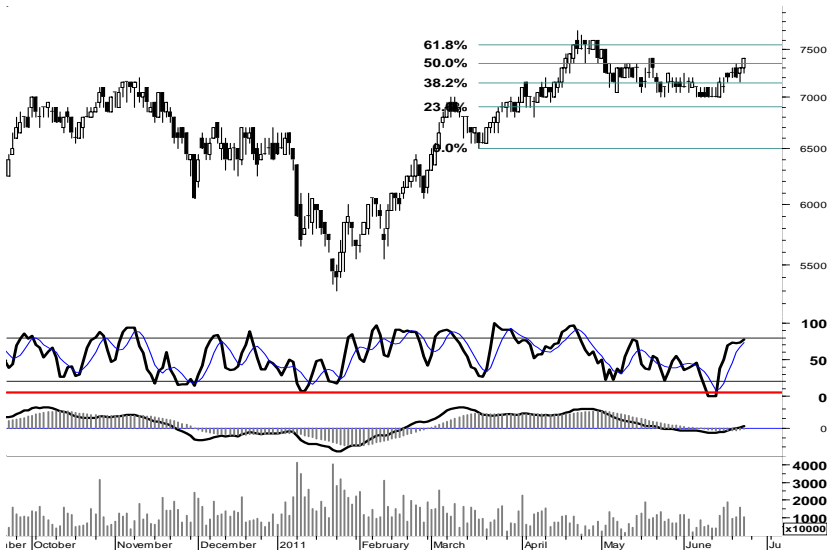
Untuk selanjutnya, diharapkan indikasi signal positif dari leading indicator yang tersisa dapat memberikan kesempatan bagi IHSG untuk bergerak positif menguji resistensi 3.840 sebelum serangkaian aksi profit taking maupun tekanan jual membawa IHSG merosot serta menguji support 3.790.



S1	S2	R1	R2
3,810	3,790	3,835	3,845

## Saham Pilihan

Saham	Harga (Rp)	Rekomendasi	Stochastic	RSI	BB Top	BB Bottom	S1	S2	R1	R2
BBCA	7,400	TakeProfit	77.78	61.56	7,450	7,200	7,300	7,200	7,500	7,600
GGRM	47,000	StrongSell	97.63	64.98	48,650	44,400	46,900	46,800	47,200	47,300
HEXA	6,450	Trading Sell	83.33	55.52	6,750	6,150	6,400	6,350	6,650	6,700
ISAT	5,200	Trading Buy	75.00	49.69	5,250	5,100	5,100	4,950	5,350	5,500
TINS	2,475	Trading	52.17	40.06	2,500	2,350	2,400	2,325	2,575	2,650
TLKM	7,150	Trading Buy	74.07	38.96	7,350	6,900	7,100	7,050	7,250	7,300



Untuk dapat keluar dari zona konsolidasi 7.000-7.350, dibutuhkan dorongan sentimen positif agar BBCA mampu melakukan penetrasi resistensi harga 7.500.

Signal positif leading indicator serta alur distribusi yang mencoba merambah zona hijau, diharapkan mendorong BBCA memanfaatkan sisa ruang untuk melanjutkan rally penguatan menguji pencapaian resistensi 7.700.

S1	S2	R1	R2
7,300	7,200	7,500	7,600



Mencapai peak area stochastic, membuat GGRM rawan akan aksi profit taking.

Melemahnya rasio volume trading kemarin, diperkirakan akan menekan GGRM memasuki zona konsolidasi 46.800-47.200.

S1	S2	R1	R2
46,900	46,800	47,200	47,300



Secara umum HEXA masih berada dalam kondisi bullish, dengan basis support pada retracement 62% di level 6.350.

Untuk selanjutnya di harapkan signal positif dalam sisa ruang penguatan yang ada, dapat memberikan peluang bagi HEXA kembali menguji resistensi harga 6.700.

S1	S2	R1	R2
6,400	6,350	6,650	6,700



Agar dapat keluar dari kondisi bearish serta kembali dalam uptrend channel, dibutuhkan lebih dari sekedar katalis positif untuk membantu ISAT menembus resistensi 5.500.

Dengan memperketat stoploss harga 5.000, ISAT memiliki peluang untuk bergerak positif menembus resistensi 5.200.

S1	S2	R1	R2
5,100	4,950	5,350	5,500



Pertumbuhan rasio volume perdagangan yang cukup signifikan serta indikasi konfirmasi signal positif pada fast moving oscillator, diharapkan memberikan dukungan sentimen yang baik untuk mendorong TINS menembus resistensi 2.550.

Kami perkirakan, pada perdagangan hari ini TINS akan mencoba bergerak dalam rentang harga 2.400-2.575.

S1	S2	R1	R2
2,400	2,325	2,575	2,650



Ditengah kondisi harga yang berimbang pada pivot area 7.150, indikasi signal positif dari beberapa leading indicator yang terlihat, membuka peluang bagi TLKM untuk mencoba pencapaian resistensi harga pada retracement 38% di 7.250-7.300.

Kami perkirakan TLKM pada perdagangan kali ini, mencoba bergerak dalam rentang harga 7.100-7.350.

S1	S2	R1	R2
7,100	7,050	7,250	7,300

## TRADE DATA

### JCI (IHSG) 3,823.7 1.8 0.05%

YTD (Rp)	3.2%	Volume (m) :	5,977
YTD (USD)	7.8%	Nilai (Rpbn) :	3,813
Moving Avg 20day	3,802	Mkt Cap (Rpbn) :	3,433
Moving Avg 50day	3,797	Market P/E (x) :	16.2
Moving Avg 200day	3,615	Market Div. Yield (%) :	2.4

### Indonesia & Sectors +/- (%) YTD (%)

MSCI Indonesia	4,724.6	8.0	0.17	3.92
JII	524.7	0.6	0.11	-1.54
LQ45	676.8	0.9	0.13	2.32
JAKFIN Index	496.3	0.4	0.00	6.36
JAKINFR Index	766.1	-1.7	-0.00	-6.48
JAKMINE Index	3,248.8	-8.2	-0.00	-0.78
JAKCONS Index	1,160.0	2.3	0.00	5.97
JAKTRAD Index	518.3	-0.1	-0.00	9.32
JAKMIND Index	1,100.1	16.8	0.02	13.76
JAKBIND Index	396.7	-1.5	-0.00	2.44
JAKPROP Index	205.7	-1.0	-0.00	1.29
JAKAGRI Index	2,296.5	-10.7	-0.00	0.53

### Commodities +/- (%) YTD (%)

CRB Index	330.21	-7.7	-2.28	-0.78
<b>Oil &amp; Gas</b>				
Crude Oil	91.02	-4.4	-4.60	-0.39
Natural Gas	4.19	-0.1	-2.87	-4.81
COAL (Rotterdam)	120.80	-2.0	-1.59	-8.07
COAL (Amsterdam)	123.00	1.0	0.79	-2.34
COAL (Australia,wk)	118.60	0.0	0.00	-3.10
<b>Industrial Metals</b>				
Aluminium	2,488.5	-42.3	-1.67	1.19
Nickel	22,125	-25	-0.11	-10.61
Tin	25,200	-175	-0.69	-6.32
<b>Precious Metal</b>				
Gold	1,520.50	-32.9	-2.12	6.97
Silver	35.00	-1.7	-4.73	13.24
<b>Soft Commodities</b>				
CPO (Malaysia)	3,169.00	-36.0	-1.12	-16.91
CPO (Netherlands)	1,095.00	-35.0	-3.10	-14.79
Rubber	4,718.67	-143.7	-2.96	-5.51
Corn	680.50	3.0	0.44	8.19
Wheat	649.00	10.8	1.68	-18.29
Soybeans	1,317.75	-12.5	-0.94	-5.45
Rice (Indonesia)	6,850.00	0.0	0.00	-3.52

### Winners

Stock	Price	(%)	Stock	Price	(%)
KAEF	255	24.39	NISP	1,220	-4.69
ADMG	620	21.57	AMRT	3,600	-2.70
BAEK	2,000	5.26	EXCL	6,100	-2.40
TBIG	2,400	4.35	BORN	1,420	-2.07
TINS	2,475	3.13	BNII	560	-1.75
ICBP	5,400	1.89	PTBA	20,500	-1.20
BDMN	6,000	1.69	ADRO	2,350	-1.05
BBCA	7,400	1.37	SMGR	9,550	-1.04
ASII	60,800	1.33	CPIN	1,910	-1.04
ISAT	5,200	0.97	BMRI	7,000	-0.71

### Losers

Stock	Price	(%)	Stock	Price	(%)
NISP	1,220	-4.69	AMRT	3,600	-2.70
AMRT	3,600	-2.70	EXCL	6,100	-2.40
EXCL	6,100	-2.40	BORN	1,420	-2.07
BORN	1,420	-2.07	BNII	560	-1.75
BNII	560	-1.75	PTBA	20,500	-1.20
PTBA	20,500	-1.20	ADRO	2,350	-1.05
ADRO	2,350	-1.05	SMGR	9,550	-1.04
SMGR	9,550	-1.04	CPIN	1,910	-1.04
CPIN	1,910	-1.04	BMRI	7,000	-0.71
BMRI	7,000	-0.71			

### Regional Indices +/- (%) YTD (%)

MXWO	MSCI World	1,281.6	-18.0	-1.38	0.12
SPX	S&P 500	1,283.5	-3.6	-0.28	2.06
<b>US</b>					
Dow Jones Industrial		12,050.0	-59.7	-0.49	4.08
Nasdaq	US	2,686.8	17.6	0.66	1.28
<b>Europe</b>					
EURO 50	Europe	264.3	-3.8	-1.40	-4.17
FTSE	London	5,674.4	-98.6	-1.71	-3.82
DAX	Germany	7,149.4	-128.8	-1.77	3.40
CAC	France	3,787.8	-83.6	-2.16	-0.45
SMI	Swiss	5,991.1	-122.3	-2.00	-6.91
<b>BRIC</b>					
BOVESPA	Brazil	61,194.1	0.0	0.00	-11.70
MICEX	Russia	1,607.9	-32.2	-1.96	-4.74
SENSEX	India	17,727.5	176.9	1.01	-13.56
NIFTY	India	5,320.0	41.7	0.79	-13.28
SHCOMP	China	2,688.2	38.9	1.47	-4.27
SZCOMP	China	1,111.2	22.8	2.10	-13.92

### Developed ASIA

Nikkei	Japan	9,596.7	-32.7	-0.34	-6.18
TPX	Japan	825.5	-3.5	-0.42	-8.15
HIS	Hong kong	21,759.1	-100.8	-0.46	-5.54
KOSPI	S. Korea	2,055.9	-8.0	-0.39	0.24
TAIEX	Taiwan	8,567.3	-53.8	-0.62	-4.52
FSSTI	Singapore	3,044.7	1.9	0.06	-4.56

### ASEAN

SET	Thailand	1,014.1	-9.7	-0.95	-1.80
PCOMP	Philippines	4,241.1	-4.1	-0.10	0.95
KLCI	Malaysia	1,563.2	-4.2	-0.27	2.92
VNINDEX	Vietnam	434.8	-4.9	-1.11	-10.30

### Currency +/- (%) YTD (%)

EURUSD	Euro	1.426	-0.010	-0.70	6.52
GBPUSD	United Kingdom	1.601	-0.006	-0.40	2.52
USDCHE	Switzerland	0.839	-0.000	-0.05	-10.31
USDCAD	Canada	0.979	0.005	0.52	-1.90
AUDUSD	Australia	1.052	-0.005	-0.49	2.83
NZDUSD	New Zealand	0.814	-0.001	-0.09	4.32
USDJPY	Japan	80.5	0.220	0.27	-0.75
USDCNY	China	6.468	0.004	0.06	-2.11
USDHKD	Hongkong	7.790	0.003	0.04	0.22
USDSGD	Singapore	1.236	0.003	0.28	-3.67
Rupiah	Indonesia	8,600.0	7.000	0.08	-4.40

### Value (Rpbn)

Value (Rpbn)	Volume (Lot)	Freq (x)
ASII 267,465	ENRG 1,145,979	JTPE 3,658
BUMI 186,486	BNBR 414,312	IPOL 3,613
BBRI 167,848	ELTY 301,408	INDS 3,377
BMRI 121,908	DEWA 301,067	CLPI 3,259
ENRG 120,472	LPKR 265,764	ADMG 3,126
PTBA 98,391	INAF 233,649	ENRG 2,863
LPKR 86,582	KAEF 205,707	INAF 2,301
BBCA 75,899	IPOL 192,986	EKAD 2,231
TINS 65,301	ADMG 187,783	BHIT 2,150
AKRA 56,768	TRAM 160,721	KBLI 2,096

Code	Last	Ytd Chg(%)	H-5 Chg (%)	Rekomendasi	STO	RSI	MACD	Bollinger Band		Support			Resistance			H-5	
								Top	Bottom	1	2	3	1	2	3	Highest	Lowest
AALI	23,150	-13.62	1.98	OverBought	72.0	50.5	(66.5)	23,450	22,850	23,000	22,850	22,750	23,250	23,350	23,500	23,500	22,600
ACES	3,000	5.26	3.45	StrongSell	85.7	61.6	81.5	3,075	2,925	2,950	2,875	2,750	3,150	3,275	3,350	3,200	2,600
ADRO	2,350	-12.15	0.00	OverBought	70.0	48.5	3.8	2,450	2,275	2,350	2,325	2,300	2,400	2,425	2,450	2,400	2,250
AKRA	2,025	19.12	13.13	StrongSell	90.7	82.5	63.1	2,150	1,775	1,975	1,925	1,850	2,100	2,150	2,200	2,075	1,770
ANTM	2,075	-16.16	1.22	Trading	47.4	39.5	(40.9)	2,125	2,000	2,050	2,000	1,975	2,125	2,150	2,200	2,100	1,990
ASII	60,800	11.76	4.56	StrongSell	89.7	63.2	442.4	61,700	57,900	59,700	58,550	57,600	61,800	62,750	63,900	61,600	57,350
BBCA	7,400	14.73	4.23	TakeProfit	77.8	61.6	10.3	7,450	7,200	7,300	7,200	7,150	7,450	7,500	7,600	7,400	7,050
BBNI	3,775	-0.66	2.72	StrongSell	89.3	49.8	(45.2)	3,900	3,600	3,750	3,725	3,700	3,800	3,825	3,850	3,800	3,550
BBRI	6,350	22.71	3.25	OverBought	75.0	52.3	(2.7)	6,500	6,250	6,300	6,250	6,200	6,400	6,450	6,500	6,450	6,100
BBTN	1,640	-1.80	0.61	StrongSell	82.6	47.1	(7.3)	1,690	1,610	1,630	1,620	1,610	1,650	1,660	1,670	1,670	1,590
BDMN	6,000	9.09	1.69	Trading	50.0	48.9	(46.9)	6,050	5,850	5,900	5,800	5,700	6,100	6,200	6,300	6,050	5,800
BISI	1,320	-29.41	0.76	Trading	53.3	29.8	(75.6)	1,410	1,270	1,300	1,280	1,240	1,360	1,400	1,420	1,430	1,270
BMRI	7,000	8.53	3.70	StrongSell	85.7	51.9	(28.2)	7,200	6,800	6,950	6,900	6,850	7,050	7,100	7,150	7,050	6,700
BSDE	890	1.14	2.30	StrongSell	88.5	51.0	(8.2)	935	825	880	865	860	900	905	920	900	810
BTEL	355	51.06	0.00	OverBought	66.7	39.8	(5.5)	360	352	347	339	332	362	369	377	360	345
BUMI	3,200	2.40	1.59	OverBought	68.4	44.1	(74.4)	3,325	2,975	3,175	3,125	3,100	3,250	3,275	3,325	3,225	2,950
CTRA	415	18.57	-1.19	OverSold	35.7	48.5	3.9	425	413	412	409	402	422	429	432	430	410
ELTY	149	-7.45	2.76	OverBought	68.2	45.4	(2.8)	155	139	147	144	143	151	152	155	151	138
EXCL	6,100	16.19	-2.40	Trading	57.1	48.2	(16.7)	6,350	6,100	6,050	6,000	5,900	6,200	6,300	6,350	6,300	6,100
GGRM	47,000	14.49	2.96	StrongSell	97.6	65.0	930.5	48,650	44,400	46,900	46,800	46,700	47,100	47,200	47,300	47,050	44,100
HEXA	6,450	-11.03	4.03	Trading Sell	83.3	55.5	49.6	6,750	6,150	6,400	6,350	6,250	6,550	6,650	6,700	6,600	6,150
INCO	4,500	-9.55	0.56	OverBought	62.5	31.9	(85.2)	4,525	4,500	4,450	4,400	4,350	4,550	4,600	4,650	4,550	4,375
INDF	5,600	13.13	5.66	StrongSell	80.0	59.5	2.1	5,900	5,250	5,550	5,500	5,450	5,650	5,700	5,750	5,700	5,200
INDY	3,825	-25.00	-1.29	OverBought	61.8	39.2	(79.3)	3,925	3,700	3,800	3,775	3,750	3,850	3,875	3,900	3,900	3,650
INTP	16,800	4.67	0.30	OverBought	69.4	48.2	(60.0)	17,050	16,550	16,800	16,750	16,750	16,850	16,850	16,900	17,000	16,400
ISAT	5,200	-4.59	0.00	Trading Buy	75.0	49.7	(33.8)	5,250	5,100	5,100	4,950	4,900	5,300	5,350	5,500	5,200	5,000
ITMG	45,300	-16.57	-0.22	Trading	57.8	40.9	(482.1)	46,000	44,350	44,950	44,600	44,350	45,550	45,800	46,150	46,250	44,000
JSMR	3,500	-1.41	2.19	StrongSell	82.4	59.7	19.5	3,575	3,425	3,475	3,450	3,425	3,525	3,550	3,575	3,550	3,375
KLBF	3,400	2.26	2.26	StrongSell	82.1	49.7	(29.8)	3,550	3,250	3,375	3,350	3,325	3,425	3,450	3,475	3,475	3,225
LSIP	2,275	-10.43	-3.19	Accumulate	31.3	37.9	(30.3)	2,325	2,275	2,250	2,225	2,175	2,325	2,375	2,400	2,375	2,250
MYOR	13,000	20.37	0.39	Trading	56.0	61.6	223.6	13,050	12,900	13,000	12,950	12,950	13,050	13,050	13,100	13,200	12,700
PGAS	4,000	-10.61	1.27	OverBought	69.2	51.4	(5.5)	4,025	4,000	3,975	3,950	3,925	4,025	4,050	4,075	4,050	3,925
PTBA	20,500	-14.41	-1.68	Trading	41.7	35.0	(221.1)	21,000	20,400	20,400	20,300	20,200	20,600	20,700	20,800	21,050	20,400
RALS	790	-8.14	2.60	Trading Sell	62.5	50.6	3.1	820	765	20,870	20,870	20,870	20,870	20,870	20,870	820	760
SGRO	3,400	4.62	3.03	StrongSell	80.0	53.4	(4.3)	3,500	3,300	3,375	3,350	3,325	3,425	3,450	3,475	3,450	3,275
SMCB	2,150	-3.37	-1.15	Trading	47.1	48.7	4.9	2,250	2,125	2,150	2,125	2,100	2,200	2,225	2,250	2,250	2,100
SMGR	9,550	-3.05	-0.52	StrongSell	82.6	51.8	17.6	9,800	9,500	9,500	9,450	9,350	9,650	9,750	9,800	9,700	9,300
SMRA	1,160	7.41	3.57	StrongSell	84.0	54.0	5.0	1,230	1,110	1,140	1,120	1,090	1,190	1,220	1,240	1,200	1,110
TINS	2,475	-13.16	1.02	Trading	52.2	40.1	(69.7)	2,500	2,350	2,400	2,325	2,275	2,525	2,575	2,650	2,500	2,325
TLKM	7,150	-10.63	0.70	Trading Buy	74.1	39.0	(143.7)	7,350	6,900	7,100	7,050	7,000	7,200	7,250	7,300	7,250	6,800
UNTR	23,550	-3.09	3.97	StrongSell	96.5	65.0	218.0	23,900	22,850	23,400	23,250	23,150	23,650	23,750	23,900	23,600	22,500
UNVR	15,000	-6.54	1.35	StrongSell	87.5	56.8	(12.4)	15,150	14,750	14,950	14,900	14,850	15,050	15,100	15,150	15,050	14,600

S1 = Support 1      S2 = Support 2      S3 = Support 3  
 R1 = Resisten 1      R2 = Resisten 2      R2 = Resisten 2  
 STO = Stochastic Oscillator  
 RSI = Relative Strength Index  
 MACD = Moving Average Convergence Divergence  
 H-5 = 5 hari sebelumnya

## RESEARCH TEAM

---

<b>Andrian Tanuwijaya</b>	Equity Analyst	(andrian.tanuwijaya@trimegah.com)
<b>Hanel Topada Era Tania</b>	Equity Analyst	(hanel.tania@trimegah.com)
<b>Paul Raymond Widjaja</b>	Equity Analyst	(paul.widjaja@trimegah.com)
<b>T Hedy Arifien</b>	Technical Analyst	(hedy@trimegah.com)
<b>Rovandi</b>	Research Assistant	(rovandi@trimegah.com)

## EQUITY CAPITAL MARKET TEAM

---

<b>Nathanael Benny Prasetyo</b>	Head of Retail ECM	(benny.prasetyo@trimegah.com)
<b>Windra Djulnaily</b>	Pluit, Jakarta	(windra.djulnaily@trimegah.com)
<b>Ariawan Anwar</b>	Artha Graha, Jakarta	(ariawan.anwar@trimegah.com)
<b>Ferry Zabur</b>	Kelapa Gading, Jakarta	(ferry.zabur@trimegah.com)
<b>Wirjawan Joesoef</b>	Mangga Dua, Jakarta	(iwan@trimegah.com)
<b>Lukman Abdul Azis</b>	Kebon Jeruk, Jakarta	(lukman@trimegah.com)
<b>Tutik Suciati</b>	Semarang, Jawa Tengah	(tuty.s@trimegah.com)
<b>Sonny Muljadi</b>	Surabaya, Jawa Timur	(sonny.muljadi@trimegah.com)
<b>Ni Luh Ketut Sri Agustini</b>	Denpasar, Bali	(sri.agustini@trimegah.com)
<b>Philip Fernando Suwandi</b>	Makassar, Sulawesi Selatan	(philip.fs@trimegah.com)
<b>agus.jatmiko</b>	Balikpapan, Kalimantan Timur	(agus.jatmiko@trimegah.com)
<b>Asep Saepudin</b>	Bandung, Jawa Barat	(asep.saepudin@trimegah.com)
<b>Asep Saepudin</b>	Cirebon, Jawa Barat	(asep.saepudin@trimegah.com)
<b>Very Wijaya</b>	Medan, Sumatera Utara	(very.wijaya@trimegah.com)
<b>Tantie Rivi Watie</b>	Pekanbaru, Riau	(tantierw@trimegah.com)
<b>Agus Bambang Suseno</b>	Solo, Jawa Tengah	(agus.suseno@trimegah.com)
<b>Agus Bambang Suseno</b>	Yogyakarta, Jawa Tengah	(agus.suseno@trimegah.com)
<b>Donny Kristanto Setiadi</b>	Palembang, Sumatra Selatan	(donny.kristanto@trimegah.com)
<b>Sonny Muljadi</b>	Malang, Jawa Timur	(sonny.muljadi@trimegah.com)

**PT Trimegah Securities Tbk**  
18<sup>th</sup> Fl, Artha Graha Building  
Jl. Jend. Sudirman Kav. 52-53  
Jakarta 12190, INDONESIA  
Tel : (6221) 2924 9088 Fax : (6221) 2924 9163

### DISCLAIMER

This report has been prepared by PT Trimegah Securities Tbk on behalf of itself and its affiliated companies and is provided for information purposes only. Under no circumstances is it to be used or considered as an offer to sell, or a solicitation of any offer to buy. This report has been produced independently and the forecasts, opinions and expectations contained herein are entirely those of Trimegah Securities.

While all reasonable care has been taken to ensure that information contained herein is not untrue or misleading at the time of publication, Trimegah Securities makes no representation as to its accuracy or completeness and it should not be relied upon as such. This report is provided solely for the information of clients of Trimegah Securities who are expected to make their own investment decisions without reliance on this report. Neither Trimegah Securities nor any officer or employee of Trimegah Securities accept any liability whatsoever for any direct or consequential loss arising from any use of this report or its contents. Trimegah Securities and/or persons connected with it may have acted upon or used the information herein contained, or the research or analysis on which it is based, before publication. Trimegah Securities may in future participate in an offering of the company's equity securities.