

IHSG

4,033.0

9.8

0.24%

Ulisan Pasar



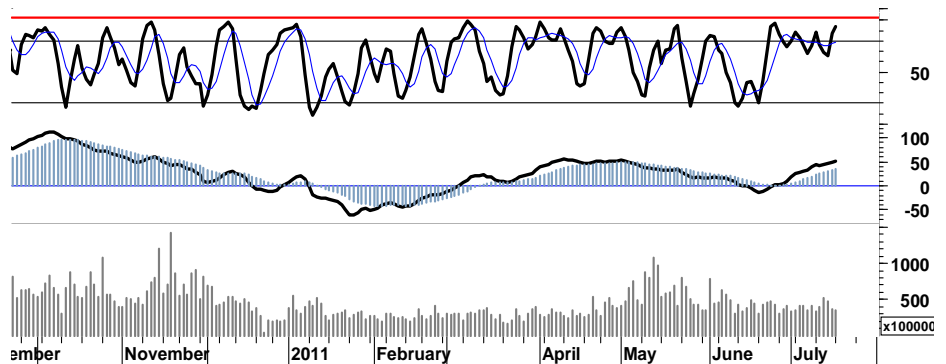
IHSG pada perdagangan kemarin kembali menunjukkan keperkasannya dengan membukukan rekor harga tertinggi intraday 4.043, sebelum akhirnya aksi profit taking menahan laju penguatan dan IHSG ditutup di level 4.023 dengan mencatatkan kenaikan sebesar 0,64%.

Pelaku asing yang membukukan total nilai pembelian bersih sebesar Rp308miliar, telah mendorong IHSG mendekati peak area overbought stochastic.

Terbatasnya ruang penguatan, pelemahan total volume transaksi yang terjadi selama 3 hari terakhir, merupakan katalis negatif yang patut diperhatikan.

Waspada! konfirmasi pola shooting star yang terbentuk kemarin, apabila IHSG pada perdagangan hari ini tidak mampu menahan gempuran tekanan jual yang membayangi dan gagal bertahan pada support harian 4.025.

Perketat stop-loss harga pada level 3.950, apabila IHSG gagal bertahan pada basis support hari ini di level 4.000. Kami perkirakan IHSG akan bergerak dalam rentang harga yang serupa 3.980 - 4.030



S1	S2	R1	R2
4,025	4,010	4,045	4,055

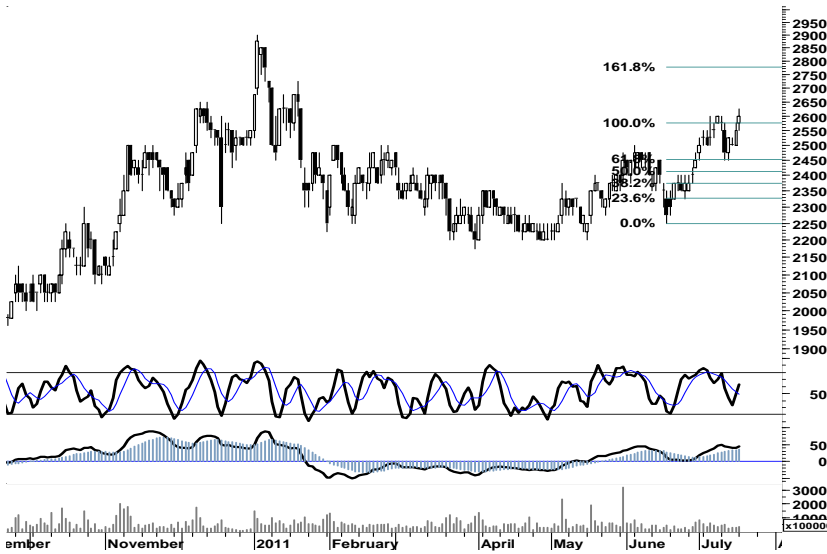
## Saham Pilihan

Saham	Harga (Rp)	Rekomendasi	Stochastic	RSI	BB Top	BB Bottom	S1	S2	R1	R2
ADRO	2,600	TakeProfit	63.16	63.92	2,650	2,475	2,575	2,525	2,675	2,725
BBCA	8,150	TakeProfit	69.23	69.44	8,400	7,850	8,100	8,050	8,450	8,500
BMRI	7,850	StrongSell	82.14	71.36	8,100	7,550	7,800	7,700	8,000	8,100
EXCL	6,050	OverSold	35.29	46.07	6,200	6,050	6,000	5,950	6,250	6,300
INDY	3,725	Trading	57.14	41.25	3,750	3,675	3,700	3,675	3,775	3,800
UNTR	25,000	Trading	48.39	61.82	25,100	24,600	24,800	24,600	25,300	25,500

**ADRO**

**2,600**

**TakeProfit**



Secara umum signal positif leading indicator yang ada, membuka peluang bagi ADRO untuk melanjutkan rally penguatannya.

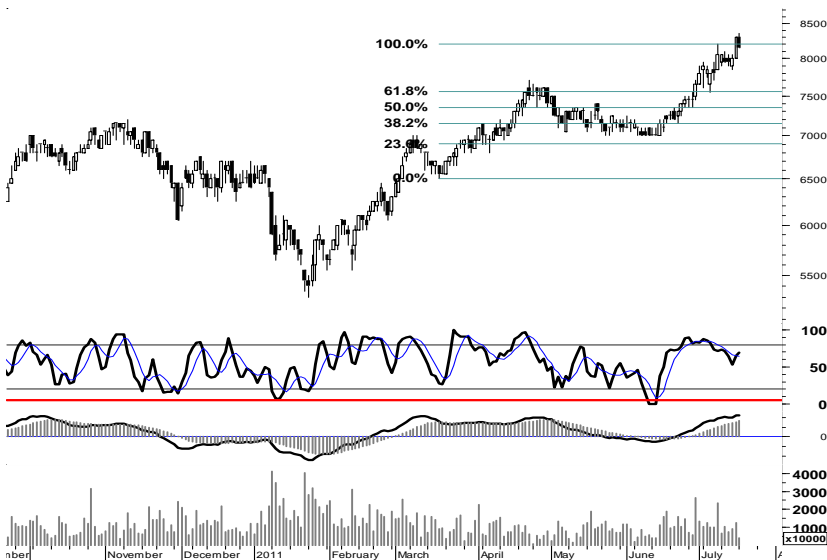
Waspadaai tekanan aksi profit taking yang membayangi ADRO apabila gagal menembus resistensi 2.675.

S1	S2	R1	R2
2,575	2,525	2,675	2,725

**BBCA**

**8,150**

**TakeProfit**



Waspadaai berlanjutnya tekanan pelemahan yang berpeluang menyeret BBCA menguji kekuatan support 8.000/8.050, apabila gagal bertahan pada support 8.150.

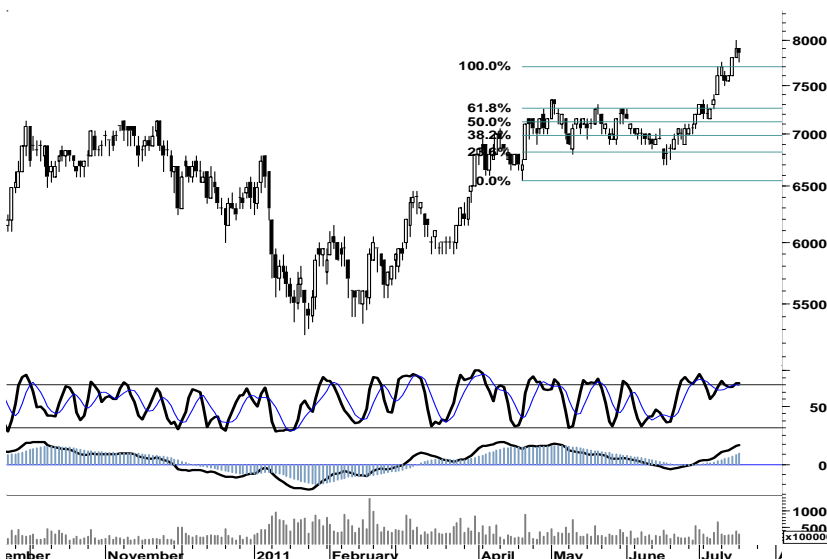
Kami perkirakan BBCA pada hari ini akan mencoba bergerak dalam interval 7.950 - 8.200.

S1	S2	R1	R2
8,100	8,050	8,450	8,500

**BMRI**

**7,850**

**StrongSell**



Ditutup pada area pivot support 7.800/7.850, menempatkan BMRI pada posisi berimbang. Apabila BMRI gagal melanjutkan penguatan dan membentuk rekor harga baru pada resisten 8.100, waspadaai berlanjutnya tekanan menguji support harga 7.600.

S1	S2	R1	R2
7,800	7,700	8,000	8,100

EXCL

6,050

OverSold



Untuk dapat bertahan dalam uptrend channel, diharapkan basis trend support 6.000-6.050 mampu mengkonfirmasi indikasi golden cross stochastic memasuki zona hijau distribusi serta mendorong EXCL melanjutkan rally penguatan menguji resistensi harga 6.250.

S1	S2	R1	R2
6,000	5,950	6,250	6,300

INDY

3,725

Trading



Peningkatan volume selama 3 hari berturut-turut, diharapkan dapat mengkonfirmasi INDY untuk keluar dari area konsolidasi resistensi 3.775.

Indikasi signal positif stochastic, membuka peluang bagi INDY melakukan penetrasi resisten 3.775.

S1	S2	R1	R2
3,700	3,675	3,775	3,800

UNTR

25,000

Trading



Indikasi signal positif golden cross stochastic, membuka peluang bagi UNTR untuk melanjutkan rally penguatan melengkap siklus target 26.000.

Waspada potensi koreksi menguji support 24.800, apabila gagal melakukan penetrasi 25.300.

S1	S2	R1	R2
24,800	24,600	25,300	25,500

## TRADE DATA

### JCI (IHSG) 4,033.0 9.8 0.24%

YTD (Rp)	8.9%	Volume (m) :	3,781
YTD (USD)	14.3%	Nilai (Rpbn) :	3,328
Moving Avg 20day	3,909	Mkt Cap (Rpbn) :	3,439
Moving Avg 50day	3,849	Market P/E (x) :	16.2
Moving Avg 200day	3,668	Market Div. Yield (%) :	2.4

### Indonesia & Sectors +/- (%) YTD (%)

MSCI Indonesia	5,029.7	13.5	0.27	10.63
JII	557.5	3.7	0.66	4.62
LQ45	714.6	1.4	0.20	8.05
JAKFIN Index	528.7	-3.4	-0.01	13.29
JAKINFR Index	765.3	-3.7	-0.00	-6.58
JAKMINE Index	3,306.0	19.1	0.01	0.97
JAKCONS Index	1,221.2	1.3	0.00	11.56
JAKTRAD Index	548.9	4.6	0.01	15.78
JAKMIND Index	1,313.2	34.7	0.03	35.79
JAKBIND Index	417.3	-1.1	-0.00	7.75
JAKPROP Index	212.2	0.8	0.00	4.50
JAKAGRI Index	2,358.3	15.3	0.01	3.24

### Commodities +/- (%) YTD (%)

CRB Index	343.81	-2.5	-0.72	3.31
<b>Oil &amp; Gas</b>				
Crude Oil	95.93	-1.3	-1.35	4.98
Natural Gas	4.55	0.0	0.00	3.20
COAL (Rotterdam)	122.55	-0.7	-0.53	-6.74
COAL (Amsterdam)	123.47	0.5	0.38	-1.97
COAL (Australia,wk)	120.40	-1.1	-0.86	-1.63
<b>Industrial Metals</b>				
Alumunium	2,478.75	3.8	0.15	0.79
Nickel	23,800	-355	-1.47	-3.84
Tin	27,375	175	0.64	1.77
<b>Precious Metal</b>				
Gold	1,602.40	12.3	0.77	12.73
Silver	40.34	1.3	3.25	30.51
<b>Soft Commodities</b>				
CPO (Malaysia)	3,090.00	-31.0	-0.99	-18.98
CPO (Netherlands)	1,075.00	-30.0	-2.71	-16.34
Rubber	4,740.64	5.4	0.11	-5.07
Corn	696.25	-5.0	-0.71	10.69
Wheat	689.50	-5.3	-0.76	-13.19
Soybeans	1,385.50	-0.3	-0.02	-0.59
Rice (Indonesia)	7,300.00	0.0	0.00	2.82

### Winners

Stock	Price	(%)	Stock	Price	(%)
TFCO	900	18.42	KLBF	3,475	-2.11
BFIN	7,150	12.60	ISAT	5,200	-1.89
SIMP	1,280	3.23	BBCA	8,150	-1.81
ASII	72,600	3.13	BNII	550	-1.79
CPIN	2,500	3.09	EXCL	6,050	-1.63
SMAR	7,000	2.94	SMGR	9,800	-1.51
HRUM	10,300	1.98	INTP	16,250	-1.22
ADRO	2,600	1.96	BBRI	6,700	-0.74
BDMN	5,650	1.80	TLKM	7,100	-0.70
UNTR	25,000	0.81	BMRI	7,850	-0.63

### Losers

Stock	Price	(%)	Stock	Price	(%)
KLBF	3,475	-2.11	ISAT	5,200	-1.89
ISAT	5,200	-1.89	BBCA	8,150	-1.81
BBCA	8,150	-1.81	BNII	550	-1.79
BNII	550	-1.79	EXCL	6,050	-1.63
EXCL	6,050	-1.63	SMGR	9,800	-1.51
SMGR	9,800	-1.51	INTP	16,250	-1.22
INTP	16,250	-1.22	BBRI	6,700	-0.74
BBRI	6,700	-0.74	TLKM	7,100	-0.70
TLKM	7,100	-0.70	BMRI	7,850	-0.63
BMRI	7,850	-0.63			

### Regional Indices +/- (%) YTD (%)

MXWO	MSCI Word	1,297.0	-16.1	-1.23	1.33
SPX	S&P 500	1,305.4	-10.7	-0.81	3.80
<b>US</b>					
Dow Jones Industrial		12,385.2	-94.6	-0.76	6.98
Nasdaq	US	2,765.1	-24.7	-0.89	4.23
<b>Europe</b>					
EURO 50	Europe	262.1	-4.8	-1.80	-4.97
FTSE	London	5,752.8	-90.8	-1.55	-2.49
DAX	Jerma	7,107.9	-112.2	-1.55	2.80
CAC	France	3,650.7	-75.9	-2.04	-4.05
SMI	Swiss	5,826.3	-111.8	-1.88	-9.47
<b>BRIC</b>					
BOVESPA	Brazil	58,837.6	-640.4	-1.08	-15.10
MICEX	Russia	1,687.6	-27.0	-1.57	-0.02
SENSEX	India	18,507.0	-54.9	-0.30	-9.76
NIFTY	India	5,567.1	-14.1	-0.25	-9.25
SHCOMP	China	2,816.7	-3.5	-0.12	0.31
SZCOMP	China	1,232.5	-0.3	-0.02	-4.52

### Developed ASIA

Nikkei	Japan	9,974.5	0.0	0.00	-2.49
TPX	Japan	859.4	0.0	0.00	-4.39
HIS	Hong kong	21,804.8	-70.6	-0.32	-5.34
KOSPI	S.Korea	2,130.5	-14.7	-0.69	3.88
TAIEX	Taiwan	8,538.6	-36.3	-0.42	-4.84
FSSTI	Singapore	3,079.0	-5.3	-0.17	-3.48

### ASEAN

SET	Thailand	1,083.9	4.0	0.37	4.96
PCOMP	Philippines	4,476.0	17.3	0.39	6.54
KLCI	Malaysia	1,562.6	-14.7	-0.93	2.88
VNINDEX	Vietnam	415.8	1.0	0.25	-14.21

### Currency +/- (%) YTD (%)

EURUSD	Euro	1.411	-0.004	-0.32	5.44
GBPUSD	United Kingdom	1.606	-0.008	-0.48	2.86
USDCHF	Switzerland	0.818	0.002	0.29	-12.57
USDCAD	Canada	0.960	0.006	0.68	-3.84
AUDUSD	Australia	1.061	-0.005	-0.43	3.65
NZDUSD	New Zealand	0.845	-0.000	-0.05	8.31
USDJPY	Japan	79.0	-0.090	-0.11	-2.56
USDCNY	China	6.469	0.006	0.09	-2.09
USDHKD	Hongkong	7.796	0.002	0.03	0.30
USDSGD	Singapore	1.216	-0.003	-0.24	-5.22
Rupiah	Indonesia	8,559.0	15.000	0.18	-4.86

### Value (Rpbn)

Value (Rpbn)	Volume (Lot)	Freq (x)
ASII 232,296	ELTY 818,055	GDST 4,781
BMRI 220,198	BKSL 432,049	TBLA 2,724
BUMI 156,127	DEWA 352,367	EKAD 2,661
BBRI 140,076	ENRG 243,172	ELTY 2,369
BBNI 113,074	BNBR 240,102	MNCN 2,160
ADRO 97,244	TBLA 169,051	PUDP 2,114
PGAS 95,499	GDST 166,108	INTA 1,828
SMGR 94,311	ASRI 147,205	ASII 1,826
SIMP 78,843	LPKR 145,137	CPIN 1,700
BDMN 76,264	TRAM 145,065	KREN 1,671

Code	Last	Ytd Chg(%)	H-5 Chg (%)	Rekomendasi	STO	RSI	MACD	Bollinger Band		Support			Resistance			H-5	
								Top	Bottom	1	2	3	1	2	3	Highest	Lowest
AALI	22,950	-14.37	-0.22	Trading Sell	28.1	46.3	(71.0)	23,150	22,750	22,900	22,850	22,800	23,000	23,050	23,100	23,350	22,750
ACES	3,150	10.53	5.00	StrongSell	94.4	68.7	59.2	3,250	2,975	3,125	3,100	3,075	3,175	3,200	3,225	3,150	2,850
ADRO	2,600	-2.80	0.97	TakeProfit	63.2	63.9	45.8	2,650	2,475	2,575	2,525	2,500	2,650	2,675	2,725	2,625	2,450
AKRA	2,425	42.65	8.99	OverBought	78.8	85.0	138.1	2,475	2,325	2,375	2,325	2,300	2,450	2,475	2,525	2,450	2,175
ANTM	1,990	-19.60	-2.93	Trading Sell	11.9	34.6	(26.7)	2,060	1,970	1,980	1,970	1,950	2,020	2,040	2,050	2,100	1,990
ASII	72,600	33.46	6.76	StrongSell	95.3	75.9	2,696.5	74,200	66,450	71,000	69,400	68,300	73,700	74,800	76,400	73,200	66,650
BBCA	8,150	26.36	1.24	TakeProfit	69.2	69.4	227.2	8,400	7,850	8,100	8,050	7,900	8,300	8,450	8,500	8,350	7,850
BBNI	3,975	4.61	1.27	StrongSell	93.3	61.6	36.2	4,025	3,850	3,950	3,925	3,900	4,000	4,025	4,050	3,975	3,825
BBRI	6,700	29.47	-2.19	Trading	40.0	56.7	106.0	6,800	6,700	6,650	6,550	6,500	6,800	6,850	6,950	6,900	6,600
BBTN	1,790	7.19	0.56	TakeProfit	73.1	61.4	33.7	1,840	1,750	1,780	1,770	1,750	1,810	1,830	1,840	1,820	1,730
BDMN	5,650	2.73	-5.04	Trading Buy	28.6	38.4	(72.2)	5,950	5,500	5,600	5,550	5,450	5,750	5,850	5,900	6,000	5,450
BISI	1,470	-21.39	7.30	OverBought	73.9	57.0	4.3	1,610	1,350	1,460	1,440	1,420	1,500	1,520	1,540	1,550	1,320
BMRI	7,850	21.71	1.95	StrongSell	82.1	71.4	195.0	8,100	7,550	7,800	7,700	7,650	7,950	8,000	8,100	8,000	7,500
BSDE	900	2.27	2.27	OverBought	76.9	53.7	(0.9)	905	890	890	875	860	920	935	950	920	860
BTEL	345	46.81	-2.82	Trading	50.0	28.2	(3.8)	355	343	340	335	330	350	355	360	355	340
BUMI	2,975	-4.80	-0.83	Trading	53.8	39.6	(81.0)	3,000	2,925	2,950	2,925	2,900	3,000	3,025	3,050	3,025	2,900
CTRA	475	35.71	4.40	StrongSell	84.8	61.1	13.0	507	446	470	465	460	480	485	490	490	435
ELTY	152	-5.59	2.70	OverBought	78.4	52.8	(1.5)	157	143	148	144	140	156	160	164	156	141
EXCL	6,050	15.24	-2.42	OverSold	35.3	46.1	(10.6)	6,200	6,050	6,000	5,950	5,850	6,150	6,250	6,300	6,350	6,000
GGRM	50,950	24.12	2.62	Trading	57.7	64.4	1,484.2	51,900	49,950	50,500	50,000	49,300	51,700	52,400	52,900	52,400	49,000
HEXA	7,600	4.83	-3.80	Trading	11.8	62.8	332.2	7,850	7,600	7,550	7,450	7,300	7,800	7,950	8,050	7,950	7,600
INCO	4,350	-12.56	-2.25	Trading Sell	35.0	35.9	(66.2)	4,475	4,325	4,350	4,350	4,325	4,375	4,400	4,400	4,500	4,325
INDF	6,000	21.21	1.69	StrongSell	86.7	63.3	118.6	6,100	5,800	5,950	5,900	5,850	6,050	6,100	6,150	6,050	5,750
INDY	3,725	-26.96	-0.67	Trading	57.1	41.2	(70.1)	3,750	3,675	3,700	3,675	3,650	3,750	3,775	3,800	3,775	3,650
INTP	16,250	1.25	-2.69	Trading	15.8	40.7	(126.1)	16,500	16,200	16,150	16,050	15,900	16,400	16,550	16,650	16,900	16,200
ISAT	5,200	-4.59	0.00	StrongSell	85.7	52.5	13.5	5,400	5,150	5,200	5,150	5,100	5,300	5,350	5,400	5,300	5,050
ITMG	47,850	-11.88	0.21	TakeProfit	79.0	62.6	440.1	48,200	47,400	47,650	47,450	47,300	48,000	48,150	48,350	48,250	46,900
JSMR	3,675	3.52	-1.34	Trading	40.0	59.9	50.0	3,700	3,600	3,650	3,625	3,600	3,700	3,725	3,750	3,750	3,575
KLBF	3,475	4.51	-2.80	Trading Sell	35.0	49.0	37.0	3,600	3,475	3,450	3,400	3,350	3,550	3,600	3,650	3,625	3,450
LSIP	2,275	-10.43	-1.09	Trading	44.4	43.1	(11.8)	2,350	2,275	2,250	2,225	2,175	2,325	2,375	2,400	2,350	2,250
MYOR	14,900	37.96	6.43	StrongSell	87.9	80.3	474.0	15,400	13,750	14,600	14,250	14,100	15,100	15,250	15,600	14,900	13,700
PGAS	3,975	-11.17	0.00	OverBought	68.8	46.7	(14.2)	4,025	3,925	3,975	3,950	3,925	4,025	4,050	4,075	4,025	3,875
PTBA	20,900	-12.73	-2.34	Trading Buy	17.1	46.2	5.0	21,300	20,750	20,800	20,700	20,600	21,000	21,100	21,200	21,550	20,800
RALS	790	-8.14	1.28	OverBought	68.8	52.0	3.7	810	790	780	765	750	810	825	840	810	760
SGRO	3,600	10.77	0.00	TakeProfit	76.0	61.8	50.0	3,700	3,525	3,575	3,550	3,500	3,650	3,700	3,725	3,650	3,450
SMCB	2,075	-6.74	-2.35	Trading	33.3	41.5	(11.3)	2,200	2,050	2,050	2,025	1,975	2,125	2,175	2,200	2,175	2,050
SMGR	9,800	-0.51	0.00	OverBought	70.6	55.2	96.4	10,050	9,750	9,700	9,600	9,450	9,950	10,100	10,200	10,000	9,700
SMRA	1,100	1.85	-1.79	Trading Sell	23.5	40.1	(7.7)	1,130	1,090	1,080	1,060	1,020	1,140	1,180	1,200	1,150	1,090
TINS	2,600	-8.77	0.97	OverBought	61.1	56.0	13.0	2,650	2,575	2,575	2,550	2,525	2,625	2,650	2,675	2,650	2,500
TLKM	7,100	-11.25	0.71	OverBought	70.6	43.9	(78.7)	7,200	7,000	7,050	7,000	6,900	7,200	7,300	7,350	7,200	6,900
UNTR	25,000	2.88	-1.57	Trading	48.4	61.8	481.4	25,100	24,600	24,800	24,600	24,450	25,150	25,300	25,500	25,400	24,350
UNVR	14,950	-6.85	-0.99	OverBought	63.6	51.8	9.6	15,100	14,750	14,900	14,850	14,800	15,000	15,050	15,100	15,100	14,700

S1 = Support 1      S2 = Support 2      S3 = Support 3  
 R1 = Resisten 1      R2 = Resisten 2      R2 = Resisten 2  
 STO = Stochastic Oscillator  
 RSI = Relative Strength Index  
 MACD = Moving Average Convergence Divergence  
 H-5 = 5 hari sebelumnya

## RESEARCH TEAM

---

<b>Andrian Tanuwijaya</b>	Equity Analyst	(andrian.tanuwijaya@trimegah.com)
<b>Hanel Topada Era Tania</b>	Equity Analyst	(hanel.tania@trimegah.com)
<b>Paul Raymond Widjaja</b>	Equity Analyst	(paul.widjaja@trimegah.com)
<b>T Hedy Arifien</b>	Technical Analyst	(hedy@trimegah.com)
<b>Rovandi</b>	Research Assistant	(rovandi@trimegah.com)

## EQUITY CAPITAL MARKET TEAM

---

<b>Nathanael Benny Prasetyo</b>	Head of Retail ECM	(benny.prasetyo@trimegah.com)
<b>Windra Djulnaily</b>	Pluit, Jakarta	(windra.djulnaily@trimegah.com)
<b>Ariawan Anwar</b>	Artha Graha, Jakarta	(ariawan.anwar@trimegah.com)
<b>Ferry Zabur</b>	Kelapa Gading, Jakarta	(ferry.zabur@trimegah.com)
<b>Wirjawan Joesoef</b>	Mangga Dua, Jakarta	(iwan@trimegah.com)
<b>Lukman Abdul Azis</b>	Kebon Jeruk, Jakarta	(lukman@trimegah.com)
<b>Tutik Suciati</b>	Semarang, Jawa Tengah	(tuty.s@trimegah.com)
<b>Sonny Muljadi</b>	Surabaya, Jawa Timur	(sonny.muljadi@trimegah.com)
<b>Ni Luh Ketut Sri Agustini</b>	Denpasar, Bali	(sri.agustini@trimegah.com)
<b>Philip Fernando Suwandi</b>	Makassar, Sulawesi Selatan	(philip.fs@trimegah.com)
<b>agus.jatmiko</b>	Balikpapan, Kalimantan Timur	(agus.jatmiko@trimegah.com)
<b>Asep Saepudin</b>	Bandung, Jawa Barat	(asep.saepudin@trimegah.com)
<b>Asep Saepudin</b>	Cirebon, Jawa Barat	(asep.saepudin@trimegah.com)
<b>Very Wijaya</b>	Medan, Sumatera Utara	(very.wijaya@trimegah.com)
<b>Tantie Rivi Watie</b>	Pekanbaru, Riau	(tantierw@trimegah.com)
<b>Agus Bambang Suseno</b>	Solo, Jawa Tengah	(agus.suseno@trimegah.com)
<b>Agus Bambang Suseno</b>	Yogyakarta, Jawa Tengah	(agus.suseno@trimegah.com)
<b>Donny Kristanto Setiadi</b>	Palembang, Sumatra Selatan	(donny.kristanto@trimegah.com)
<b>Sonny Muljadi</b>	Malang, Jawa Timur	(sonny.muljadi@trimegah.com)

**PT Trimegah Securities Tbk**  
18<sup>th</sup> Fl, Artha Graha Building  
Jl. Jend. Sudirman Kav. 52-53  
Jakarta 12190, INDONESIA  
Tel : (6221) 2924 9088 Fax : (6221) 2924 9163

### DISCLAIMER

This report has been prepared by PT Trimegah Securities Tbk on behalf of itself and its affiliated companies and is provided for information purposes only. Under no circumstances is it to be used or considered as an offer to sell, or a solicitation of any offer to buy. This report has been produced independently and the forecasts, opinions and expectations contained herein are entirely those of Trimegah Securities.

While all reasonable care has been taken to ensure that information contained herein is not untrue or misleading at the time of publication, Trimegah Securities makes no representation as to its accuracy or completeness and it should not be relied upon as such. This report is provided solely for the information of clients of Trimegah Securities who are expected to make their own investment decisions without reliance on this report. Neither Trimegah Securities nor any officer or employee of Trimegah Securities accept any liability whatsoever for any direct or consequential loss arising from any use of this report or its contents. Trimegah Securities and/or persons connected with it may have acted upon or used the information herein contained, or the research or analysis on which it is based, before publication. Trimegah Securities may in future participate in an offering of the company's equity securities.