

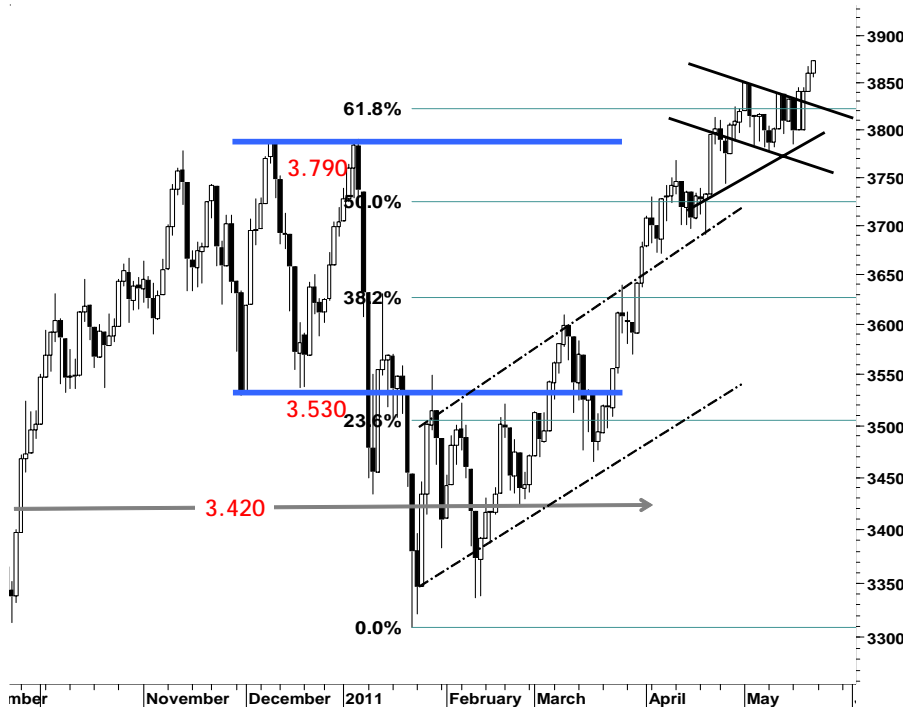
IHSG

3.872,9

13,1

0,34%

Ulisan Pasar



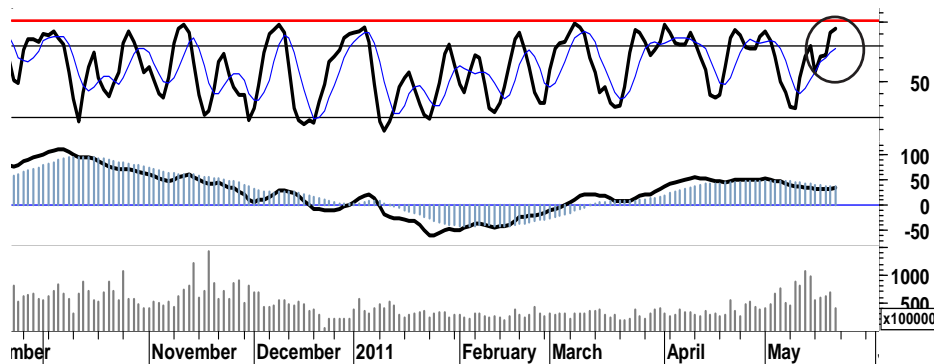
Ditengah minimnya sentimen positif serta kondisi perdagangan di bursa regional yang cukup kondusif, IHSG kembali mencetak rekor harga tertinggi baru dengan di tutup menguat tipis sebesar 0,34% di level 3.873. Dimana para pelaku asing masih mencatatkan nilai pembelian bersih sebesar Rp88miliar yang memberikan kontribusi terhadap penguatan IHSG, sekalipun di awal sesi sempat diwarnai oleh aksi ambil untung pada sejumlah saham unggulan ataupun saham-saham favorit.

Seyogyanya pasca keberhasilan melakukan penetrasi resistensi 3.870 serta bertahan pada basis support 3.850, IHSG menjadi semakin dekat untuk mencoba mencapai target resistensi pada level 3.900 dan 4.100. Dimana beberapa leading indicator masih memberikan signal positif, meskipun nampak terlihat mulai terbatasnya ruang pergerakan bagi IHSG untuk melanjutkan rally penguatannya. Setidaknya peluang untuk tetap bergerak ke utara pada

perdagangan hari selanjutnya, masih cukup terbuka lebar.

Yang menjadi perhatian pada awal pekan perdagangan kali ini adalah, bagaimana sentimen positif deflasi bersama dengan euforia musim pembagian dividen mampu menepis gempuran sentimen negatif akan perhatian dunia terhadap issue yang sedang bergejolak di Yunani saat ini.

Perketat stop-loss harga pada level 3.780 untuk membatasi resiko yang mungkin muncul, apabila IHSG gagal melanjutkan rally penguatannya untuk bergerak menguji resistensi harga terdekat di level 3.880 - 3.889.



S1	S2	R1	R2
3,860	3,850	3,880	3,885

Saham Pilihan

Saham	Harga (Rp)	Rekomendasi	Stochastic	RSI	BB Top	BB Bottom	S1	S2	R1	R2
AALI	24,000	Trading Sell	61.11	63.21	24,150	23,500	23,900	23,800	24,300	24,400
BMRI	7,250	StrongSell	88.24	60.92	7,350	7,050	7,200	7,150	7,350	7,400
BUMI	3,525	Trading	57.89	59.15	3,575	3,475	3,500	3,450	3,600	3,650
INTP	17,200	Trading	54.90	60.00	17,350	16,200	16,850	16,450	17,650	18,050
ISAT	5,350	StrongSell	88.89	52.85	5,450	5,200	5,300	5,250	5,450	5,500
PGAS	4,000	OverSold	20.00	48.94	4,075	3,950	3,950	3,900	4,050	4,100

AALI

23,850

Trading Sell



Aksi ambil untung yang terjadi setelah AALI berhasil melampaui resistensi kuat di level 23.800, dengan ditutup menguat tipis di level 23.850.

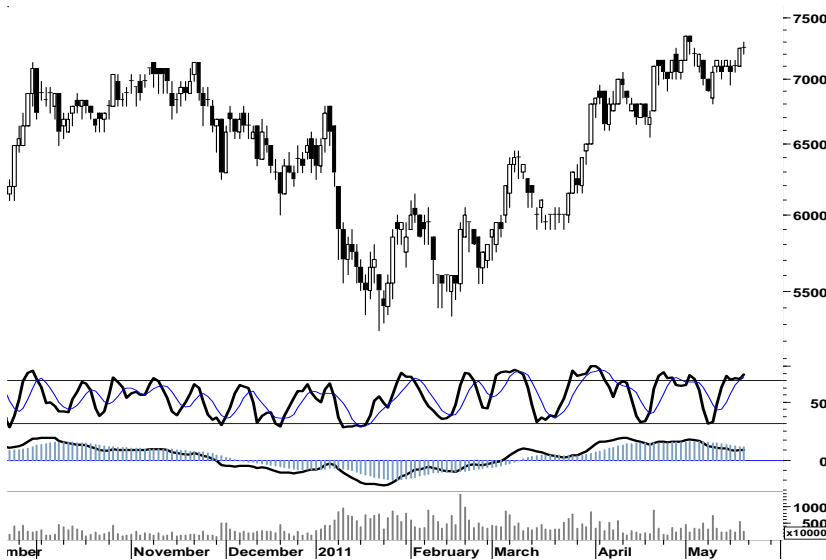
Sekalipun AALI masih memiliki peluang untuk melanjutkan rally penguatannya, namun waspadai tekanan pelemahan menguji kembali support harga 23.800 apabila AALI gagal bergerak ke utara menuju resistensi 24.300.

S1	S2	R1	R2
23,900	23,800	24,300	24,400

BMRI

7,250

StrongSell



Waspadai potensi pelemahan untuk kembali menguji support 7.150, dengan munculnya doji-star serta BMRI yang ditutup di level pivot support 7.250.

Semakin sempitnya ruang penguatan, BMRI pada perdagangan hari ini akan mencoba bergerak dalam interval harga 7.150 - 7.350.

S1	S2	R1	R2
7,200	7,150	7,350	7,400

BUMI

3,525

Trading



Sebagaimana yang tercermin dalam chart, dimana golden cross tercipta serta signal positif leading indicator yang juga tercermin, seyogyanya BUMI masih memiliki peluang untuk kembali menguji resistensi 3.625 - 3.650.

Perketat stop-loss harga di level 3.420, apabila BUMI gagal penetrasi resistensi 3.625 - 3.650.

S1	S2	R1	R2
3,500	3,450	3,600	3,650

INTP

17,200

Trading



Diharapkan indikasi positif golden cross pada stochastic, mampu mendorong INTP untuk melakukan penetrasi resistensi harga pada level 17.575.

S1	S2	R1	R2
16,850	16,450	17,650	18,050

ISAT

5,350

StrongSell



Tampaknya ISAT masih akan bertahan dalam area konsolidasi, apabila kali ini gagal melakukan penetrasi resistensi 5.450.

S1	S2	R1	R2
5,300	5,250	5,450	5,500

PGAS

4,000

OverSold



Munculnya golden cross pada stochastic oscillator, diharapkan mampu mendorong PGAS untuk menguji penetrasi 4.050.

S1	S2	R1	R2
3,950	3,900	4,050	4,100

TRADE DATA

JCI (IHSG) 3,873.0 13.1 0.34%

YTD (Rp)	4.6% Volume (m) :	5,047
YTD (USD)	9.8% Nilai (Rpbn) :	4,828
Moving Avg 20day	3,816 Mkt Cap (Rptr) :	3,448
Moving Avg 50day	3,711 Market P/E (x) :	16.4
Moving Avg 200day	3,531 Market Div. Yield (%) :	2.4

Indonesia & Sectors		+/-	(%)	YTD (%)
MSCI Indonesia	4,833.5	23.1	0.48	6.31
JII	537.5	4.2	0.80	0.87
LQ45	691.8	2.5	0.36	4.61
JAKFIN Index	508.4	0.1	0.00	8.94
JAKINFR Index	795.0	2.0	0.00	-2.96
JAKMINE Index	3,271.4	2.2	0.00	-0.09
JAKCONS Index	1,136.9	-2.3	-0.00	3.86
JAKTRAD Index	502.6	3.9	0.01	6.01
JAKMIND Index	1,118.8	15.2	0.01	15.70
JAKBIND Index	407.6	3.9	0.01	5.25
JAKPROP Index	208.7	-0.6	-0.00	2.74
JAKAGRI Index	2,358.6	36.0	0.02	3.25

Commodities +/- (%) YTD (%)

CRB Index	341.56	2.3	0.67	2.63
Oil & Gas				
Crude Oil	99.49	1.1	1.07	8.88
Natural Gas	4.23	0.1	3.32	-3.97
COAL (Rotterdam)	122.50	0.2	0.16	-6.77
COAL (Amsterdam)	122.86	0.7	0.54	-2.45
COAL (Australia,wk)	117.15	0.0	0.00	-4.29
Industrial Metals				
Aluminium	2,482.5	1.3	0.05	0.95
Nickel	23,540	-15	-0.06	-4.89
Tin	27,750	-500	-1.77	3.16
Precious Metal				
Gold	1,508.90	16.5	1.11	6.16
Silver	35.09	0.2	0.44	13.51
Soft Commodities				
CPO (Malaysia)	3,477.00	24.0	0.70	-8.84
CPO (Netherlands)	1,170.00	25.0	2.18	-8.95
Rubber	4,913.10	-45.9	-0.92	-1.62
Corn	759.50	11.3	1.50	20.75
Wheat	806.50	-5.5	-0.68	1.54
Soybeans	1,380.25	0.8	0.05	-0.97
Rice (Indonesia)	6,750.00	0.0	0.00	-4.93

Winners

Stock	Price	(%)	Stock	Price	(%)
SMAR	6,800	6.25	POLY	375	-24.24
DSSA	19,000	5.56	ENRG	193	-3.02
GJTL	3,225	4.88	MEGA	3,500	-2.78
MNCN	930	4.49	TBIG	2,250	-2.17
INTP	17,200	3.30	TPIA	4,650	-1.59
SMGR	9,750	1.56	JSMR	3,450	-1.43
ASII	62,000	1.47	GGRM	43,700	-1.24
BBCA	7,300	0.69	ANTM	2,200	-1.12
TLKM	7,650	0.66	PNBN	1,080	-0.92
PGAS	4,000	0.63	INDF	5,650	-0.88

Losers

Stock	Price	(%)	Stock	Price	(%)
POLY	375	-24.24	ENRG	193	-3.02
ENRG	193	-3.02	MEGA	3,500	-2.78
MEGA	3,500	-2.78	TBIG	2,250	-2.17
TBIG	2,250	-2.17	TPIA	4,650	-1.59
TPIA	4,650	-1.59	JSMR	3,450	-1.43
JSMR	3,450	-1.43	GGRM	43,700	-1.24
GGRM	43,700	-1.24	ANTM	2,200	-1.12
ANTM	2,200	-1.12	PNBN	1,080	-0.92
PNBN	1,080	-0.92	INDF	5,650	-0.88
INDF	5,650	-0.88			

Regional Indices +/- (%) YTD (%)

MXWO	MSCI World	1,336.7	-9.1	-0.67	4.42
SPX	S&P 500	1,333.3	-10.3	-0.77	6.01
US					
Dow Jones Industrial		12,512.0	-93.3	-0.74	8.07
Nasdaq	US	2,803.3	-20.0	-0.71	5.67
Europe					
EURO 50	Europe	279.7	-0.4	-0.13	1.39
FTSE	London	5,948.5	-7.5	-0.13	0.82
DAX	Germany	7,266.8	-91.4	-1.24	5.10
CAC	France	3,990.9	-36.9	-0.92	4.89
SMI	Swiss	6,530.6	-27.3	-0.42	1.47
BRIC					
BOVESPA	Brazil	62,596.5	229.2	0.37	-9.68
MICEX	Russia	1,604.0	-26.8	-1.64	-4.98
SENSEX	India	18,326.1	184.7	1.02	-10.64
NIFTY	India	5,486.4	58.3	1.07	-10.57
SHCOMP	China	2,858.5	-1.1	-0.04	1.79
SZCOMP	China	1,192.7	-4.7	-0.39	-7.61

Developed ASIA

Nikkei	Japan	9,607.1	-13.7	-0.14	-6.08
TPX	Japan	827.8	-4.1	-0.50	-7.90
HIS	Hong kong	23,199.4	36.0	0.16	0.71
KOSPI	S.Korea	2,111.5	16.0	0.76	2.95
TAIEX	Taiwan	8,837.0	-55.8	-0.63	-1.51
FSSTI	Singapore	3,168.5	-4.0	-0.13	-0.67

ASEAN

SET	Thailand	1,072.9	-4.6	-0.42	3.89
PCOMP	Philippines	4,285.2	-12.8	-0.30	2.00
KLCI	Malaysia	1,541.0	-3.0	-0.19	1.46
VNINDEX	Vietnam	432.9	-12.0	-2.69	-10.69

Currency +/- (%) YTD (%)

EURUSD	Euro	1.416	-0.015	-1.03	5.81
GBPUSD	United Kingdom	1.623	-0.001	-0.05	3.95
USDCHE	Switzerland	0.877	-0.003	-0.39	-6.18
USDCAD	Canada	0.974	0.007	0.68	-2.38
AUDUSD	Australia	1.066	-0.001	-0.09	4.17
NZDUSD	New Zealand	0.796	0.005	0.64	2.03
USDJPY	Japan	81.7	0.090	0.11	0.71
USDCNY	China	6.492	-0.013	-0.19	-1.74
USDHKD	Hongkong	7.774	0.000	0.00	0.02
USDSGD	Singapore	1.238	0.001	0.11	-3.51
Rupiah	Indonesia	8,536.0	-17.000	-0.20	-5.11

Value (Rpbn)

Value (Rpbn)	Volume (Lot)	Freq (x)
ASII 410,643	BNBR 1,218,994	ELTY 2,854
SMGR 198,550	ELTY 932,677	ENRG 2,660
BUMI 184,838	ENRG 742,760	PKPK 2,406
BMRI 180,497	DEWA 362,999	POLY 2,251
BBRI 130,498	TRUB 278,264	ASII 2,135
PGAS 109,828	BLTA 166,231	CMNP 1,983
TLKM 104,930	TRAM 160,413	MNCN 1,825
ADRO 98,975	CMNP 133,838	BBRI 1,643
CMNP 84,457	BKSL 130,782	BNBR 1,615
ELTY 79,852	PKPK 124,225	ADRO 1,464

Code	Last	Ytd Chg(%)	H-5 Chg (%)	Rekomendasi	STO	RSI	MACD	Bollinger Band		Support			Resistance			H-5	
								Top	Bottom	1	2	3	1	2	3	Highest	Lowest
AALI	24,000	-10.45	2.13	Trading Sell	61.1	63.2	267.7	24,150	23,500	23,900	23,800	23,650	24,150	24,300	24,400	24,150	23,450
ACES	2,700	-5.26	0.93	OverBought	60.0	57.9	21.5	2,775	2,600	2,650	2,575	2,550	2,750	2,775	2,850	2,700	2,600
ADRO	2,375	-11.21	5.56	StrongSell	90.9	59.2	17.0	2,475	2,250	2,375	2,350	2,350	2,400	2,400	2,425	2,400	2,200
AKRA	1,690	-0.59	5.62	StrongSell	85.7	66.4	28.3	1,740	1,600	1,680	1,660	1,650	1,710	1,720	1,740	1,710	1,580
ANTM	2,200	-11.11	-1.12	Trading	55.6	43.5	(16.3)	2,250	2,200	2,200	2,200	2,175	2,225	2,250	2,250	2,250	2,175
ASII	62,000	13.97	6.62	StrongSell	95.5	73.6	1,258.9	63,300	58,100	61,350	60,700	60,300	62,400	62,800	63,450	62,150	58,150
BBCA	7,300	13.18	1.39	Trading	55.0	53.3	19.6	7,400	7,100	7,200	7,100	7,000	7,400	7,500	7,600	7,400	7,050
BBNI	3,950	3.95	1.28	OverBought	73.3	52.8	0.8	4,000	3,900	3,925	3,900	3,875	3,975	4,000	4,025	3,975	3,850
BBRI	6,550	26.57	5.65	StrongSell	96.3	63.5	99.0	6,800	6,150	6,500	6,450	6,400	6,600	6,650	6,700	6,550	6,050
BBTN	1,660	-0.60	-1.19	Trading	50.0	48.4	(1.7)	1,700	1,650	1,650	1,640	1,620	1,680	1,700	1,710	1,710	1,640
BDMN	6,050	10.00	0.00	Accumulate	20.0	38.5	(89.5)	6,150	6,050	6,050	6,000	5,950	6,150	6,200	6,250	6,200	6,050
BISI	1,590	-14.97	-3.05	OverSold	26.1	44.0	(16.8)	1,660	1,580	1,580	1,570	1,550	1,610	1,630	1,640	1,670	1,590
BMRI	7,250	12.40	2.84	StrongSell	88.2	60.9	108.7	7,350	7,050	7,200	7,150	7,100	7,300	7,350	7,400	7,300	6,950
BSDE	900	2.27	-3.23	OverSold	36.4	52.7	15.1	940	890	890	880	860	920	940	950	940	900
BTEL	375	59.57	-1.32	Trading	44.4	52.4	3.1	382	373	372	369	367	377	379	382	385	370
BUMI	3,525	12.80	-0.70	Trading	57.9	59.1	61.5	3,575	3,475	3,500	3,450	3,425	3,575	3,600	3,650	3,575	3,425
CTRA	410	17.14	-4.65	Trading	53.8	59.1	12.1	437	398	399	387	379	419	427	439	435	395
ELTY	171	6.21	8.23	TakeProfit	76.3	70.5	8.0	182	164	168	164	160	176	180	184	182	154
EXCL	6,500	23.81	1.56	Trading	41.3	59.1	144.0	6,700	6,450	6,450	6,400	6,300	6,600	6,700	6,750	7,000	6,150
GGRM	43,700	6.46	6.98	StrongSell	83.5	66.2	764.8	44,750	43,450	43,500	43,250	42,850	44,150	44,550	44,800	44,900	40,800
HEXA	6,700	-7.59	4.69	TakeProfit	75.6	67.6	190.0	7,000	6,150	6,600	6,450	6,350	6,850	6,950	7,100	6,850	6,000
INCO	4,925	-1.01	1.55	OverBought	61.1	57.4	10.0	4,975	4,775	4,875	4,825	4,775	4,975	5,025	5,075	4,950	4,775
INDF	5,650	14.14	1.80	OverBought	73.3	58.4	75.1	5,750	5,600	5,600	5,550	5,500	5,700	5,750	5,800	5,750	5,500
INDY	4,150	-18.63	1.84	Trading	51.9	57.5	38.4	4,200	4,150	4,125	4,075	4,050	4,200	4,225	4,275	4,275	4,050
INTP	17,200	7.17	2.38	Trading	54.9	60.0	75.0	17,350	16,200	16,850	16,450	16,250	17,450	17,650	18,050	17,250	16,300
ISAT	5,350	-1.83	1.90	StrongSell	88.9	52.9	(1.4)	5,450	5,200	5,300	5,250	5,200	5,400	5,450	5,500	5,350	5,200
ITMG	47,050	-13.35	0.97	OverBought	69.5	50.7	(365.6)	48,050	44,550	46,750	46,450	46,200	47,300	47,550	47,850	47,300	44,400
JSMR	3,450	-2.82	0.00	OverBought	60.0	59.0	34.0	3,525	3,425	3,450	3,425	3,400	3,500	3,525	3,550	3,525	3,400
KLBF	3,500	5.26	2.19	OverBought	63.0	52.4	8.1	3,600	3,425	3,475	3,450	3,425	3,525	3,550	3,575	3,600	3,375
LSIP	2,400	-5.51	0.00	OverSold	38.5	50.8	7.6	2,450	2,375	2,400	2,375	2,375	2,425	2,425	2,450	2,450	2,350
MYOR	11,950	10.65	3.46	TakeProfit	66.7	65.9	193.7	12,100	11,650	11,700	11,450	11,150	12,250	12,550	12,800	12,300	11,500
PGAS	4,000	-10.61	-3.03	OverSold	20.0	48.9	26.0	4,075	3,950	3,950	3,900	3,875	4,025	4,050	4,100	4,150	3,925
PTBA	21,050	-12.11	-2.09	Accumulate	34.8	38.1	(202.1)	21,450	20,650	20,900	20,750	20,650	21,150	21,250	21,400	21,700	20,600
RALS	760	-11.63	4.11	StrongSell	-	100.0	-	780	740	750	735	730	770	775	790	770	720
SGRO	3,475	6.92	2.21	TakeProfit	68.8	61.8	69.1	3,525	3,400	3,450	3,425	3,400	3,500	3,525	3,550	3,525	3,375
SMCB	2,175	-2.25	2.35	StrongSell	85.7	55.4	8.2	2,250	2,050	2,125	2,075	2,050	2,200	2,225	2,275	2,175	2,000
SMGR	9,750	-1.02	4.84	StrongSell	95.5	66.2	55.9	9,900	9,250	9,650	9,550	9,450	9,850	9,950	10,050	9,800	9,250
SMRA	1,120	3.70	0.00	OverSold	33.3	45.6	(5.8)	1,130	1,120	1,120	1,110	1,110	1,130	1,130	1,140	1,160	1,100
TINS	2,700	-5.26	0.00	OverBought	71.4	45.8	(18.4)	2,750	2,650	2,700	2,675	2,675	2,725	2,725	2,750	2,750	2,575
TLKM	7,650	-4.38	-0.65	Trading	50.0	56.8	92.3	7,800	7,600	7,600	7,550	7,500	7,700	7,750	7,800	7,800	7,550
UNTR	22,250	-8.44	-1.33	Trading	56.8	50.4	139.8	22,750	21,750	22,050	21,850	21,650	22,450	22,650	22,850	22,950	21,550
UNVR	15,000	-6.54	0.67	OverBought	64.3	43.4	(115.5)	15,100	14,850	14,950	14,850	14,750	15,150	15,250	15,350	15,150	14,650

S1 = Support 1 S2 = Support 2 S3 = Support 3
 R1 = Resisten 1 R2 = Resisten 2 R2 = Resisten 2
 STO = Stochastic Oscillator
 RSI = Relative Strength Index
 MACD = Moving Average Convergence Divergence
 H-5 = 5 hari sebelumnya

RESEARCH TEAM

Andrian Tanuwijaya	Equity Analyst	(andrian.tanuwijaya@trimegah.com)
Hanel Topada Era Tania	Equity Analyst	(hanel.tania@trimegah.com)
T Heldy Arifien	Technical Analyst	(heldy@trimegah.com)
Rovandi	Research Assistant	(rovandi@trimegah.com)

EQUITY CAPITAL MARKET TEAM

Nathanael Benny Prasetyo	Head of Retail ECM	(benny.prasetyo@trimegah.com)
Windra Djulnaily	Pluit, Jakarta	(windra.djulnaily@trimegah.com)
Ariawan Anwar	Artha Graha, Jakarta	(ariawan.anwar@trimegah.com)
Ferry Zabur	Kelapa Gading, Jakarta	(ferry.zabur@trimegah.com)
Wirjawan Joesoef	Mangga Dua, Jakarta	(iwan@trimegah.com)
Lukman Abdul Azis	Kebon Jeruk, Jakarta	(lukman@trimegah.com)
Tutik Suciati	Semarang, Jawa Tengah	(tuty.s@trimegah.com)
Sonny Muljadi	Surabaya, Jawa Timur	(sonny.muljadi@trimegah.com)
Ni Luh Ketut Sri Agustini	Denpasar, Bali	(sri.agustini@trimegah.com)
Philip Fernando Suwandi	Makassar, Sulawesi Selatan	(philip.fs@trimegah.com)
agus.jatmiko	Balikpapan, Kalimantan Timur	(agus.jatmiko@trimegah.com)
Asep Saepudin	Bandung, Jawa Barat	(asep.saepudin@trimegah.com)
Asep Saepudin	Cirebon, Jawa Barat	(asep.saepudin@trimegah.com)
Very Wijaya	Medan, Sumatera Utara	(very.wijaya@trimegah.com)
Tantie Rivi Watie	Pekanbaru, Riau	(tantierw@trimegah.com)
Agus Bambang Suseno	Solo, Jawa Tengah	(agus.suseno@trimegah.com)
Agus Bambang Suseno	Yogyakarta, Jawa Tengah	(agus.suseno@trimegah.com)
Donny Kristanto Setiadi	Palembang, Sumatra Selatan	(donny.kristanto@trimegah.com)
Sonny Muljadi	Malang, Jawa Timur	(sonny.muljadi@trimegah.com)

PT Trimegah Securities Tbk
18th Fl, Artha Graha Building
Jl. Jend. Sudirman Kav. 52-53
Jakarta 12190, INDONESIA
Tel : (6221) 2924 9088 Fax : (6221) 2924 9163

DISCLAIMER

This report has been prepared by PT Trimegah Securities Tbk on behalf of itself and its affiliated companies and is provided for information purposes only. Under no circumstances is it to be used or considered as an offer to sell, or a solicitation of any offer to buy. This report has been produced independently and the forecasts, opinions and expectations contained herein are entirely those of Trimegah Securities.

While all reasonable care has been taken to ensure that information contained herein is not untrue or misleading at the time of publication, Trimegah Securities makes no representation as to its accuracy or completeness and it should not be relied upon as such. This report is provided solely for the information of clients of Trimegah Securities who are expected to make their own investment decisions without reliance on this report. Neither Trimegah Securities nor any officer or employee of Trimegah Securities accept any liability whatsoever for any direct or consequential loss arising from any use of this report or its contents. Trimegah Securities and/or persons connected with it may have acted upon or used the information herein contained, or the research or analysis on which it is based, before publication. Trimegah Securities may in future participate in an offering of the company's equity securities.