

IHSG

3.763,6

-28,6

-0,75%

Ulisan Pasar



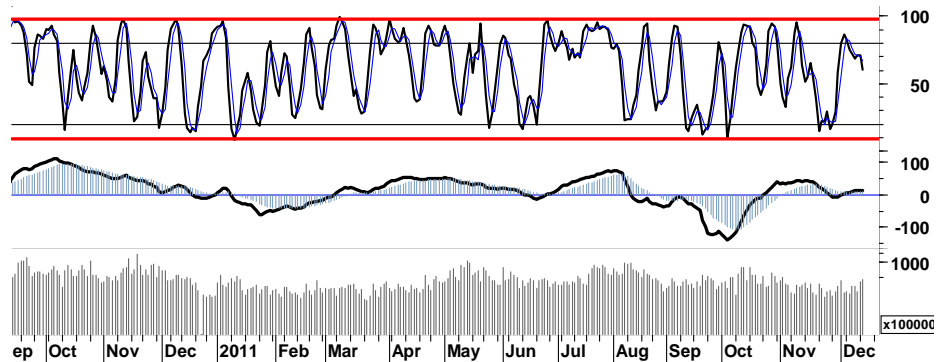
Dampak dari wacana pemangkasan peringkat utang negara-negara di Eropa, kembali menekan pergerakan IHSG yang kembali terpuruk -0,75% ditutup pada level 3.764.

Dominasi sentimen negatif tersebut menekan aktifitas perdagangan bursa Eropa, yang mengakibatkan DAX/CAC kembali terpuruk terpuruk masing-masing sebesar -0,2% dan -0,4%. Sementara hasil keputus The Fed untuk mempertahankan tingkat suku bunga acuan di Amerika telah memberikan ruang terhadap indeks bursa Amerika untuk mencoba bertahan dalam teritori positif, DJI, S&P500 dan Nasdaq ditutup masing-masing sebesar -0,6%, -0,9% dan -1,3%.

IHSG yang sejak sepekan lalu berada dalam area trading overbought stochastic (5d), seringkali terganjal untuk melakukan penetrasi level area 3.800. Secara umum basis support 3.720/3.680, masih cukup mampu untuk menahan laju tekanan jual yang diakibatkan oleh aksi profit taking.

Pada perdagangan hari ini, IHSG diperkirakan akan mencoba berada pada area yang serupa, yaitu dalam rentang harga 3.720 - 3.810.

S1	S2	R1	R2
3,741	3,718	3,790	3,815



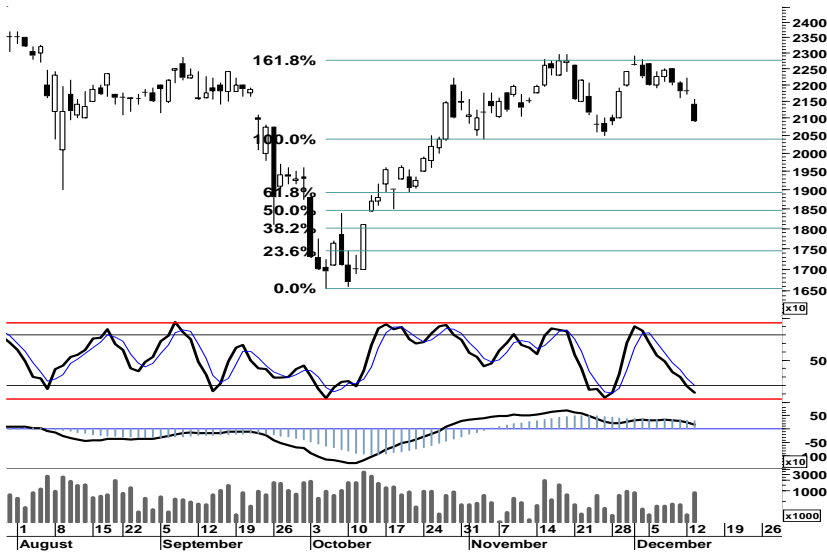
## Saham Pilihan

Saham	Harga (Rp)	Rekomendasi	Stochastic	RSI	BB Top	BB Bottom	S1	S2	R1	R2
AAI	20,900	StrongBuy	11.27	44.94	22,600	20,600	20,700	20,500	21,800	22,000
ADRO	1,880	StrongBuy	5.48	41.83	2,020	1,840	1,860	1,840	1,940	1,960
KLBF	3,425	StrongBuy	17.39	44.40	3,525	3,375	3,400	3,350	3,500	3,550
MAPI	5,050	StrongBuy	13.04	43.61	5,450	5,000	5,000	4,950	5,350	5,400
UNTR	24,600	OverSold	23.08	49.20	25,600	24,200	24,350	24,100	25,000	25,250
UNVR	17,300	StrongBuy	11.90	52.39	18,000	17,150	17,200	17,050	17,650	17,800

**AALI**

**20,900**

**StrongBuy**



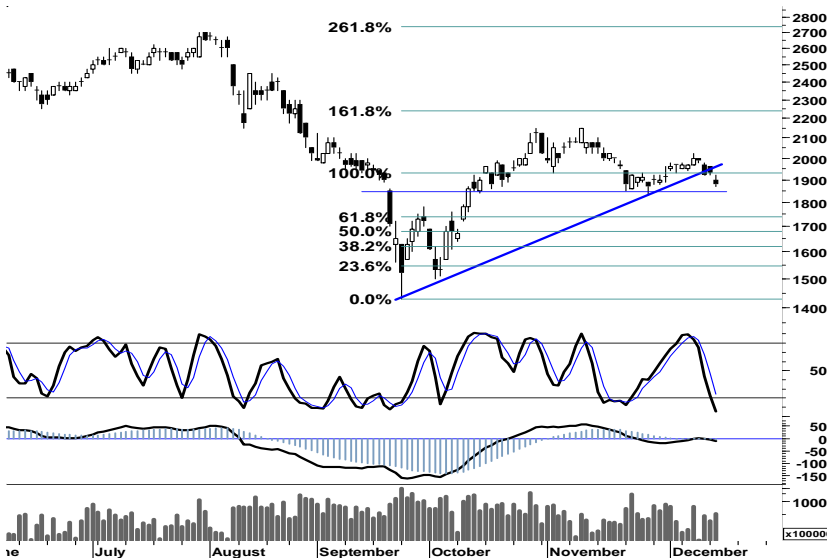
Tekanan jual yang terjadi kemarin, meninggalkn celah resistensi harga 21.700 yang merupakan peluang swing positif bagi AALI apabila berhasil melakukan pembalikan arah pada perdagangan hari ini dengan memanfaatkan ruang sempit pelemahan di support 20.700.

S1	S2	R1	R2
20,700	20,500	21,800	22,000

**ADRO**

**1,880**

**StrongBuy**



Aksi jual yang terjadi pada perdagangan kemarin, telah membawa ADRO mencapai area oversold terendah. Sebagaimana pada chart addict kemarin, area basis support 1.900 merupakan area akumulasi.

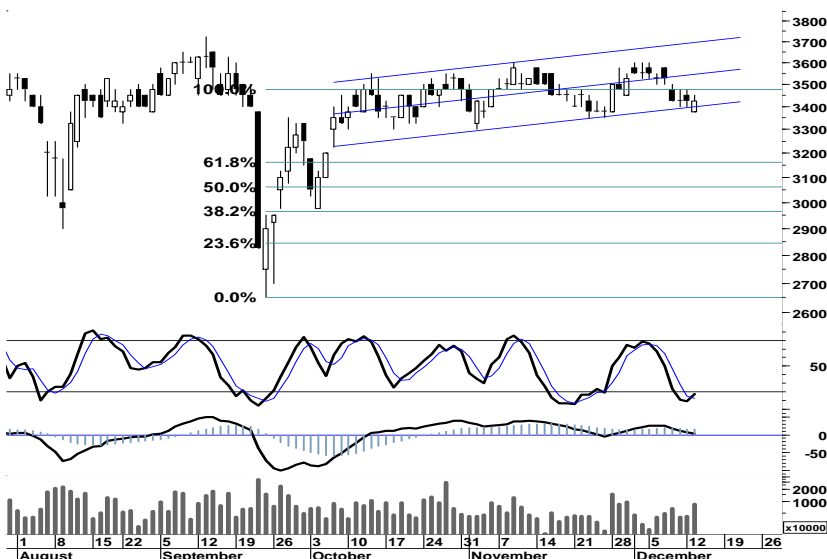
Dengan demikian pada perdagangan hari ini, ADRO memiliki peluang untuk melakukan technical rebound, dan bergerak dalam rentang harga 1.860 - 1.960.

S1	S2	R1	R2
1,860	1,840	1,940	1,960

**KLBF**

**3,425**

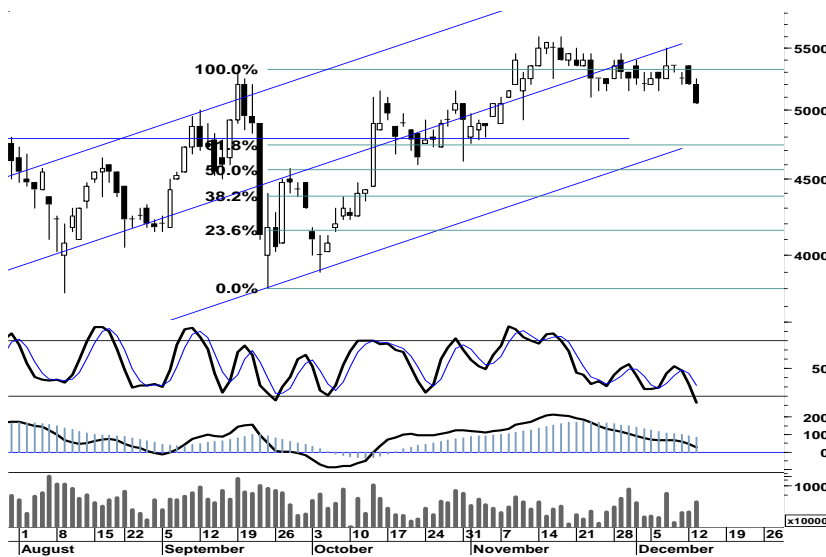
**StrongBuy**



Signal positif yang muncul pada stochastic (5d) akibat perlawanan beli yang terkadi kemarin, membuka peluang bagi KLBF untuk melanjutkan upaya melakukan penetrasi resistensi 3.500.

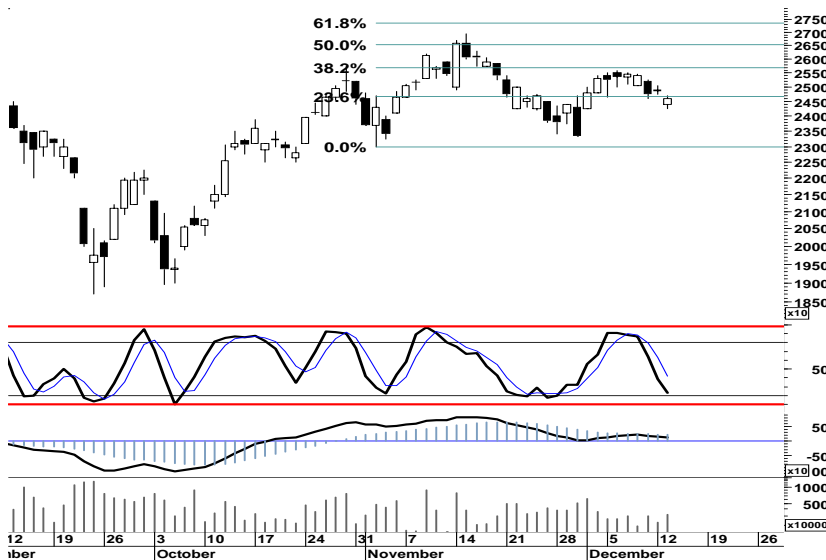
kami perkirakan pada perdagangan hari ini KLBF akan mencoba bergerak dalam rentang harga 3.400 - 3.600.

S1	S2	R1	R2
3,400	3,350	3,500	3,550



Secara umum, MAPI berada dalam kondisi short-term bullish. Support kuat pada area 4.950-5.000 merupakan area bottom fishing bagi MAPI untuk melakukan pembalikan arah pada perdagangan hari ini.

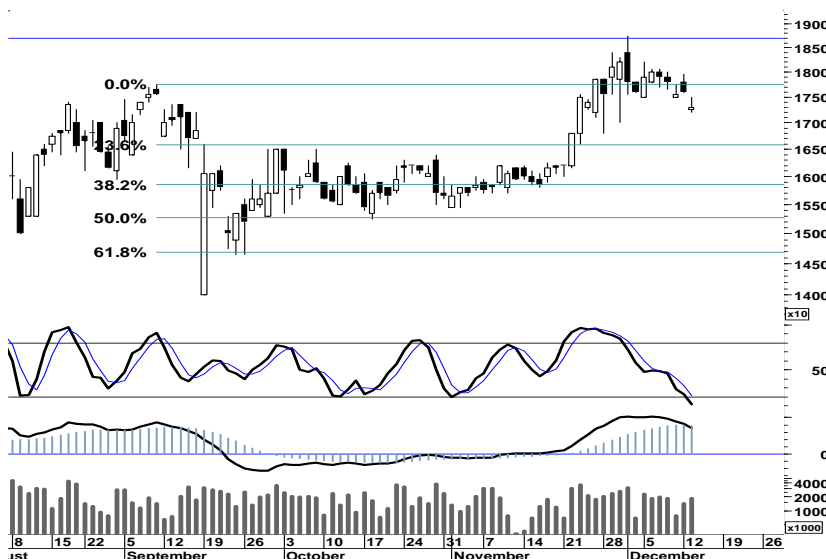
S1	S2	R1	R2
5,000	4,950	5,350	5,400



Celah harga yang terbentuk akibat adanya lonjakan aksi jual kemarin, merupakan peluang bagi UNTR untuk melakukan pembalikan arah pada area oversold seiring terbatasnya ruang tekanan yang tercermin pada stochastic (5d).

Pada perdagangan hari ini, kami perkirakan UNTR akan berada dalam rentang harga 24.500 - 25.000.

S1	S2	R1	R2
24,350	24,100	25,000	25,250



Sebagaimana yang tercermin pada beberapa saham pilihan kami. Terbatasnya ruang tekanan pada stochastic (5d), serta celah resistensi yang terbentuk akibat lonjakan aksi jual kemarin, telah membuka peluang bagi UNVR untuk melakukan pembalikan arah.

Kami perkirakan UNVR pada perdagangan hari ini akan menguji area 17.200 - 17.650.

S1	S2	R1	R2
17,200	17,050	17,650	17,800

## TRADE DATA

### JCI (IHSG) 3,763.6 -28.6 -0.75%

YTD (Rp)	1.6%	Volume (m) :	4,794
YTD (USD)	0.2%	Nilai (Rpbn) :	3,328
Moving Avg 20day	3,742	Mkt Cap (Rpbn) :	3,439
Moving Avg 50day	3,708	Market P/E (x) :	16.2
Moving Avg 200day	3,763	Market Div. Yield (%) :	2.4

### Indonesia & Sectors +/- (%) YTD (%)

MSCI Indonesia	4,692.8	-57.4	-1.21	3.22
JII	527.7	-3.3	-0.62	-0.97
LQ45	662.3	-7.8	-1.17	0.15
JAKFIN Index	483.7	-8.3	-0.02	3.64
JAKINFR Index	694.4	-8.2	-0.01	-15.23
JAKMINE Index	2,521.9	-30.2	-0.01	-22.98
JAKCONS Index	1,273.8	-14.2	-0.01	16.37
JAKTRAD Index	575.1	-3.0	-0.01	21.30
JAKMIND Index	1,317.7	1.4	0.00	36.26
JAKBIND Index	390.7	4.0	0.01	0.89
JAKPROP Index	224.8	7.6	0.03	10.68
JAKAGRI Index	2,109.7	-42.5	-0.02	-7.64

### Commodities +/- (%) YTD (%)

CRB Index	305.77	2.9	0.96	-8.12
<b>Oil &amp; Gas</b>				
Crude Oil	100.14	2.4	2.42	9.59
Natural Gas	3.28	0.0	0.77	-25.56
COAL (Rotterdam)	111.80	0.4	0.36	-14.92
COAL (Amsterdam)	111.50	0.5	0.45	-11.47
COAL (Australia,wk)	109.55	0.0	0.00	-10.50
<b>Industrial Metals</b>				
Aluminium	1,995.00	-14.5	-0.72	-18.88
Nickel	18,305	-145	-0.79	-26.04
Tin	19,550	-300	-1.51	-27.32
<b>Precious Metal</b>				
Gold	1,663.10	-5.1	-0.31	17.00
Silver	31.21	0.3	0.84	0.95
<b>Soft Commodities</b>				
CPO (Malaysia)	3,001.00	5.0	0.17	-21.32
CPO (Netherlands)	1,010.00	10.0	1.00	-21.40
Rubber	3,334.62	-61.6	-1.81	-33.23
Corn	594.50	0.5	0.08	-5.48
Wheat	600.50	6.3	1.05	-24.39
Soybeans	1,118.50	6.5	0.58	-19.75
Rice (Indonesia)	8,000.00	150.0	1.91	12.68

### Winners

Stock	Price	(%)	Stock	Price	(%)
JKON	1,210	24.74	AALI	20,900	-4.13
PTPP	500	23.46	BBNI	3,825	-3.77
CTRA	620	10.71	BUMI	2,150	-3.37
BIPI	193	7.82	ADRO	1,880	-2.59
APLN	345	7.81	BBRI	6,550	-2.24
BSDE	960	4.35	BBCA	7,850	-1.88
SMGR	10,250	3.54	UNVR	17,300	-1.70
INTP	15,900	2.58	BMRI	6,500	-1.52
BRAU	420	2.44	TLKM	7,150	-1.38
AMRT	4,600	2.22	GGRM	62,000	-1.35

### Losers

Stock	Price	(%)	Stock	Price	(%)
ASII	329,895		ELTY	862,654	
SMGR	219,710		BIPI	562,307	
BBRI	211,538		KIJA	459,001	
BMRI	162,204		ENRG	259,493	
INTP	122,496		BKSL	243,963	
TLKM	111,233		PTPP	242,161	
BBNI	102,477		ADHI	206,755	
BUMI	100,649		BNBR	190,988	
CMNP	99,805		INPC	175,203	
ADRO	95,962		BSDE	165,376	

### Regional Indices +/- (%) YTD (%)

MXWO	MSCI World	1,159.4	-9.5	-0.82	-9.43
SPX	S&P 500	1,225.7	-10.7	-0.87	-2.54
<b>US</b>					
Dow Jones Industrial		11,954.9	-66.4	-0.55	3.26
Nasdaq	US	2,579.3	-33.0	-1.26	-2.77
<b>Europe</b>					
EURO 50	Europe	237.3	1.3	0.53	-13.96
FTSE	London	5,490.2	62.3	1.15	-6.95
DAX	Germany	5,774.3	-11.2	-0.19	-16.49
CAC	France	3,078.7	-10.9	-0.35	-19.08
SMI	Swiss	5,759.7	12.6	0.22	-10.51
<b>BRIC</b>					
BOVESPA	Brazil	57,494.9	148.0	0.26	-17.04
MICEX	Russia	1,378.6	28.6	2.12	-18.33
SENSEX	India	16,002.5	132.2	0.83	-21.97
NIFTY	India	4,800.6	36.0	0.76	-21.74
SHCOMP	China	2,248.6	-43.0	-1.87	-19.92
SZCOMP	China	921.3	-28.5	-3.00	-28.63

### Developed ASIA

Nikkei	Japan	8,552.8	-101.0	-1.17	-16.39
TPX	Japan	740.7	-6.0	-0.80	-17.59
HIS	Hong kong	18,447.2	-128.5	-0.69	-19.92
KOSPI	S. Korea	1,864.1	-35.7	-1.88	-9.11
TAIEX	Taiwan	6,896.3	-52.7	-0.76	-23.14
FSSTI	Singapore	2,685.7	-16.0	-0.59	-15.81

### ASEAN

SET	Thailand	1,030.6	-3.4	-0.33	-0.21
PCOMP	Philippines	4,282.6	6.3	0.15	1.94
KLCI	Malaysia	1,465.4	-1.7	-0.12	-3.52
VNINDEX	Vietnam	371.8	-3.6	-0.95	-23.30

### Currency +/- (%) YTD (%)

EURUSD	Euro	1.304	-0.015	-1.14	-2.59
GBPUSD	United Kingdom	1.548	-0.011	-0.67	-0.85
USDCHE	Switzerland	0.946	0.008	0.90	1.11
USDCAD	Canada	1.034	0.007	0.70	3.64
AUDUSD	Australia	1.002	-0.006	-0.56	-2.11
NZDUSD	New Zealand	0.757	-0.006	-0.81	-3.00
USDJPY	Japan	78.0	0.060	0.08	-3.85
USDCNY	China	6.366	0.005	0.08	-3.65
USDHKD	Hongkong	7.779	-0.005	-0.06	0.07
USDSGD	Singapore	1.306	0.005	0.41	1.74
Rupiah	Indonesia	9,105.0	54.000	0.60	1.21

### Value (Rpbn)

Value (Rpbn)	Volume (Lot)	Freq (x)
ASII 329,895	ELTY 862,654	CASS 10,526
SMGR 219,710	BIPI 562,307	INPC 7,219
BBRI 211,538	KIJA 459,001	MRAT 4,543
BMRI 162,204	ENRG 259,493	PTPP 3,920
INTP 122,496	BKSL 243,963	BIPI 3,412
TLKM 111,233	PTPP 242,161	ADHI 3,396
BBNI 102,477	ADHI 206,755	IGAR 3,017
BUMI 100,649	BNBR 190,988	ADRO 2,658
CMNP 99,805	INPC 175,203	GTBO 2,621
ADRO 95,962	BSDE 165,376	BBRI 2,599

Code	Last	Ytd Chg(%)	H-5 Chg (%)	Rekomendasi	STO	RSI	MACD	Bollinger Band		Support			Resistance			H-5	
								Top	Bottom	1	2	3	1	2	3	Highest	Lowest
AALI	20,900	-22.01	-6.07	StrongBuy	11.3	44.9	194.1	22,600	20,600	20,700	20,500	20,050	21,350	21,800	22,000	22,500	20,900
ACES	3,900	36.84	2.63	StrongSell	100.0	60.7	79.7	3,975	3,825	3,875	3,850	3,825	3,925	3,950	3,975	3,900	3,800
ADRO	1,880	-29.72	-4.57	StrongBuy	5.5	41.8	(10.9)	2,020	1,840	1,860	1,840	1,810	1,910	1,940	1,960	2,025	1,870
AISA	570	-26.92	1.79	Trading	47.1	38.3	(13.0)	580	565	560	545	540	580	585	600	590	540
ANTM	1,630	-34.14	-1.81	OverSold	23.5	46.0	(7.2)	1,670	1,620	1,620	1,610	1,600	1,640	1,650	1,660	1,680	1,610
ASII	74,950	37.78	4.61	StrongSell	99.0	67.2	1,342.9	76,200	72,100	74,000	73,050	72,550	75,450	75,950	76,900	75,000	70,900
ASRI	455	49.18	1.11	OverBought	60.0	56.5	3.3	465	440	447	439	432	462	469	477	470	435
BBCA	7,850	21.71	-0.63	Trading	46.7	47.7	0.4	8,100	7,800	7,800	7,750	7,650	7,950	8,050	8,100	8,050	7,800
BBNI	3,825	0.66	0.00	Trading	54.2	49.6	12.9	4,000	3,800	3,775	3,725	3,625	3,925	4,025	4,075	4,025	3,800
BBRI	6,550	26.57	-1.50	Trading	47.1	45.2	(2.8)	6,800	6,550	6,500	6,400	6,350	6,650	6,700	6,800	6,800	6,450
BDMN	4,275	-22.27	-1.72	Trading	47.4	35.1	(108.9)	4,475	4,250	4,200	4,100	4,000	4,400	4,500	4,600	4,425	4,200
BISI	920	-50.80	5.75	OverBought	66.7	54.4	(15.6)	930	875	890	855	830	950	975	1,010	940	860
BKSL	270	150.00	5.88	OverBought	75.0	57.5	1.3	273	260	259	247	239	279	287	299	275	245
BMRI	6,500	0.78	-1.52	Trading	43.8	43.4	(75.5)	6,750	6,450	6,450	6,400	6,300	6,600	6,700	6,750	6,700	6,450
BSDE	960	9.09	7.87	TakeProfit	75.0	61.1	(2.7)	980	865	920	875	850	990	1,015	1,060	970	870
BTEL	265	12.77	-3.64	OverBought	61.5	44.8	(1.7)	275	260	259	252	249	269	272	279	275	255
BUMI	2,150	-31.20	1.18	StrongSell	82.4	50.1	(7.4)	2,250	2,150	2,125	2,075	2,025	2,225	2,275	2,325	2,225	2,075
BWPT	1,170	-10.69	-0.85	OverSold	33.3	52.1	11.1	1,220	1,160	1,160	1,150	1,140	1,180	1,190	1,200	1,210	1,160
CPIN	2,300	28.49	-1.08	Trading	40.0	39.1	(67.1)	2,375	2,275	2,275	2,250	2,225	2,325	2,350	2,375	2,425	2,250
ELTY	113	-29.81	6.60	OverBought	63.6	56.6	(1.6)	115	102	109	104	102	116	118	123	113	103
EXCL	4,550	-13.33	2.25	OverBought	60.9	40.2	(125.2)	4,600	4,525	4,500	4,450	4,425	4,575	4,600	4,650	4,625	4,425
GGRM	62,000	51.04	-1.35	OverSold	23.0	48.1	651.3	63,650	61,600	61,100	60,200	59,500	62,700	63,400	64,300	64,650	60,850
HEXA	8,600	18.62	1.18	TakeProfit	68.8	63.2	134.9	8,700	8,500	8,600	8,600	8,550	8,650	8,700	8,700	8,650	8,350
HRUM	7,200	-23.81	-2.04	OverSold	34.4	43.3	(146.7)	7,400	7,050	7,150	7,050	7,000	7,300	7,350	7,450	7,500	7,000
INCO	3,100	-37.69	-0.80	OverBought	61.5	43.2	(49.1)	3,200	3,100	3,050	3,000	2,950	3,150	3,200	3,250	3,175	3,050
INDF	4,625	-6.57	-3.14	StrongBuy	17.4	35.5	(86.2)	4,875	4,575	4,575	4,500	4,425	4,725	4,800	4,875	4,850	4,575
INDY	2,125	-58.33	-3.41	Accumulate	36.8	39.4	(66.1)	2,250	2,100	2,100	2,075	2,050	2,150	2,175	2,200	2,250	2,100
INTP	15,900	-0.93	3.92	OverBought	60.9	59.3	111.2	16,100	15,200	15,550	15,200	14,950	16,150	16,400	16,750	16,000	15,100
ISAT	5,350	-1.83	-5.31	OverSold	32.1	50.5	84.0	5,700	5,150	5,250	5,100	4,950	5,550	5,700	5,850	5,750	5,250
ITMG	37,750	-30.48	-2.58	Accumulate	20.8	35.9	(1,132.0)	39,100	37,150	37,450	37,100	36,700	38,200	38,600	38,950	39,300	37,500
JPFA	4,175	31.50	-2.91	Accumulate	22.2	35.7	(133.0)	4,250	4,125	4,125	4,050	4,025	4,225	4,250	4,325	4,375	4,075
JSMR	4,200	18.31	8.39	StrongSell	94.1	69.6	66.5	4,375	3,950	4,175	4,150	4,100	4,250	4,300	4,325	4,250	3,775
KLBF	3,425	3.01	-2.84	StrongBuy	17.4	44.4	(2.2)	3,525	3,375	3,400	3,350	3,325	3,475	3,500	3,550	3,575	3,375
LSIP	2,200	-13.39	-2.22	Trading	50.0	42.5	13.6	2,350	2,200	2,175	2,125	2,075	2,275	2,325	2,375	2,325	2,175
MAIN	920	-70.32	-1.08	Trading	50.0	38.3	(20.1)	940	905	910	895	890	930	935	950	950	890
MAPI	5,050	81.98	-3.81	StrongBuy	13.0	43.6	27.0	5,450	5,000	5,000	4,950	4,800	5,200	5,350	5,400	5,500	5,050
MBAI	12,750	-18.79	4.51	StrongSell	100.0	53.2	(142.6)	12,950	12,500	12,750	12,750	12,750	12,750	12,750	12,750	12,750	12,200
PGAS	3,150	-29.61	0.00	Trading	57.1	56.7	48.3	3,225	3,150	3,100	3,050	3,025	3,175	3,200	3,250	3,200	3,075
PTBA	17,050	-28.81	-0.87	Trading	50.9	48.1	(93.4)	17,300	16,900	16,900	16,750	16,600	17,200	17,350	17,500	17,450	16,600
RALS	590	-97.17	3.51	OverBought	75.0	45.5	(14.1)	595	575	580	565	560	600	605	620	590	560
SGRO	2,950	-9.23	-1.67	OverSold	27.3	45.0	(2.5)	3,050	2,950	2,925	2,900	2,850	3,000	3,050	3,075	3,050	2,925
SIPD	55	-25.68	3.77	OverBought	71.4	49.7	(1.0)	56	53	54	52	51	57	58	60	56	51
SMCB	2,150	-3.37	8.04	StrongSell	92.4	77.0	67.8	2,225	2,100	2,100	2,050	2,000	2,200	2,250	2,300	2,175	1,950
SMGR	10,250	4.06	7.33	TakeProfit	75.7	69.7	218.0	10,400	9,450	9,900	9,500	9,200	10,600	10,900	11,300	10,500	9,450
SMRA	1,170	8.33	11.43	StrongSell	88.2	63.2	6.6	1,230	1,080	1,140	1,110	1,090	1,190	1,210	1,240	1,180	1,050
SSIA	550	-38.89	27.91	StrongSell	81.4	78.7	35.7	575	490	530	505	490	570	585	610	580	420
TINS	1,710	-40.00	-0.58	Trading	40.0	39.0	(35.7)	1,730	1,700	1,700	1,690	1,680	1,720	1,730	1,740	1,740	1,680
TLKM	7,150	-10.63	-2.72	OverSold	33.3	40.1	(51.6)	7,350	7,150	7,100	7,050	6,950	7,250	7,350	7,400	7,400	7,100
UNTR	24,600	1.23	-2.96	OverSold	23.1	49.2	100.9	25,600	24,200	24,350	24,100	23,900	24,800	25,000	25,250	25,600	24,250
UNVR	17,300	7.79	-3.89	StrongBuy	11.9	52.4	357.6	18,000	17,150	17,200	17,050	16,900	17,500	17,650	17,800	18,050	17,200

**S1** = Support 1      **S2** = Support 2      **S3** = Support 3  
**R1** = Resisten 1      **R2** = Resisten 2      **R2** = Resisten 2  
**STO** = Stochastic Oscillator  
**RSI** = Relative Strength Index  
**MACD** = Moving Average Convergence Divergence  
**H-5** = 5 hari sebelumnya

## RESEARCH TEAM

---

<b>Michele Gabriela</b>	Equity Analyst	(michele.gabriela@trimegah.com)
<b>T Hedy Arifien</b>	Technical Analyst	(heldy@trimegah.com)
<b>Rovandi</b>	Research Assistant	(rovandi@trimegah.com)

## EQUITY CAPITAL MARKET TEAM

---

<b>Nathanael Benny Prasetyo</b>	Head of Retail ECM	(benny.prasetyo@trimegah.com)
<b>Windra Djulnaily</b>	Pluit, Jakarta	(windra.djulnaily@trimegah.com)
<b>Ariawan Anwar</b>	Artha Graha, Jakarta	(ariawan.anwar@trimegah.com)
<b>Ferry Zabur</b>	Kelapa Gading, Jakarta	(ferry.zabur@trimegah.com)
<b>Wirjawan Joesoef</b>	Mangga Dua, Jakarta	(iwan@trimegah.com)
<b>Lukman Abdul Azis</b>	Kebon Jeruk, Jakarta	(lukman@trimegah.com)
<b>Untung Wijaya</b>	Semarang, Jawa Tengah	(untung.wijaya@trimegah.com)
<b>Sonny Muljadi</b>	Surabaya, Jawa Timur	(sonny.muljadi@trimegah.com)
<b>Ni luh Ketut Sri Agustini</b>	Denpasar, Bali	(sri.agustini@trimegah.com)
<b>Philip Fernando Suwandi</b>	Makassar, Sulawesi Selatan	(philip.fs@trimegah.com)
<b>agus.jatmiko</b>	Balikpapan, Kalimantan Timur	(agus.jatmiko@trimegah.com)
<b>Asep Saepudin</b>	Bandung, Jawa Barat	(asep.saepudin@trimegah.com)
<b>Ariffianto</b>	Cirebon, Jawa Barat	(ariffianto@trimegah.com)
<b>Very Wijaya</b>	Medan, Sumatera Utara	(very.wijaya@trimegah.com)
<b>Tantie Rivi Watie</b>	Pekanbaru, Riau	(tantierw@trimegah.com)
<b>Agus Bambang Suseno</b>	Solo, Jawa Tengah	(agus.suseno@trimegah.com)
<b>Untung Wijaya</b>	Yogyakarta, Jawa Tengah	(untung.wijaya@trimegah.com)
<b>Donny Kristanto Setiadi</b>	Palembang, Sumatra Selatan	(donny.kristanto@trimegah.com)
<b>Rr. Putri Ayu Erikusuma</b>	Malang, Jawa Timur	(putri.ayu@trimegah.com)

**PT Trimegah Securities Tbk**  
18<sup>th</sup> Fl, Artha Graha Building  
Jl. Jend. Sudirman Kav. 52-53  
Jakarta 12190, INDONESIA  
Tel : (6221) 2924 9088 Fax : (6221) 2924 9163

### DISCLAIMER

This report has been prepared by PT Trimegah Securities Tbk on behalf of itself and its affiliated companies and is provided for information purposes only. Under no circumstances is it to be used or considered as an offer to sell, or a solicitation of any offer to buy. This report has been produced independently and the forecasts, opinions and expectations contained herein are entirely those of Trimegah Securities.

While all reasonable care has been taken to ensure that information contained herein is not untrue or misleading at the time of publication, Trimegah Securities makes no representation as to its accuracy or completeness and it should not be relied upon as such. This report is provided solely for the information of clients of Trimegah Securities who are expected to make their own investment decisions without reliance on this report. Neither Trimegah Securities nor any officer or employee of Trimegah Securities accept any liability whatsoever for any direct or consequential loss arising from any use of this report or its contents. Trimegah Securities and/or persons connected with it may have acted upon or used the information herein contained, or the research or analysis on which it is based, before publication. Trimegah Securities may in future participate in an offering of the company's equity securities.