

IHSG

3.781,1

66,0

1,78%

Ulisan Pasar



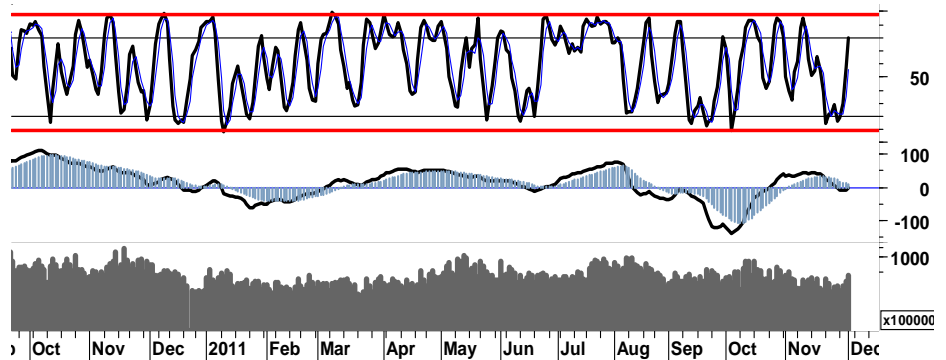
Optimisme para pelaku pasar yang terlihat mulai tumbuh, sebagaimana terjadi aksi beli pada sesi I perdagangan yang mendorong IHSG melesat masuk ke dalam area 3.800 dan menguji resistensi harga 3.820. Sebelum akhirnya IHSG kembali diwarnai oleh aksi profit taking yang menyeret keluar dari area 3.800, dan ditutup dengan penguatan 66point pada area support harga 3.781. Investor asingmembukukan nilai pembelian bersih sebesar Rp621,9miliar.

Pasca melesatnya indeks utama Eropa sebagaimana momentum positif yang berkenaan dengan penyelesaian krisis utang di Eropa mulai mereda, aksi profit taking pun mewarnai pergerakan DAX/CAC yang terkoreksi tipis sebesar -0,9%/-0,8%. Dilain pihak indeks bursa di Amerika bergerak variatif, dimana DJI, S&P500 yang mengalami koreksi masing-masing sebesar -0,2%, sementara Nasdaq bergerak menguat tipis 0,2%.

Secara umum IHSG masih berada pada kondisi

Bullish (uptrend channel jangka pendek), dan masih tersedia ruang untuk bergerak positif menguji kembali penetrasi 3.810 yang sempat tertunda.

Waspada aksi profit taking diperkirakan dapat kembali terjadi pada perdagangan hari ini. IHSG pada perdagangan hari ini, kami perkirakan akan bergerak dalam rentang harga 3.730 - 3.825



S1	S2	R1	R2
3,730	3,675	3,825	3,865

## Saham Pilihan

Saham	Harga (Rp)	Rekomendasi	Stochastic	RSI	BB Top	BB Bottom	S1	S2	R1	R2
BISI	880	Trading	47.06	38.67	890	850	870	860	900	910
BMRI	6,650	Trading	56.00	47.83	6,750	6,350	6,550	6,450	6,850	6,950
ITMG	40,150	Trading	47.37	45.20	40,500	37,150	39,300	38,450	41,350	42,200
PTBA	17,300	Trading	59.26	49.34	17,500	16,550	17,150	16,950	17,950	18,150
TLKM	7,300	OverSold	30.43	43.84	7,450	7,150	7,250	7,200	7,600	7,650
UNTR	24,800	Trading	55.68	52.26	25,150	23,150	24,400	23,950	25,450	25,900

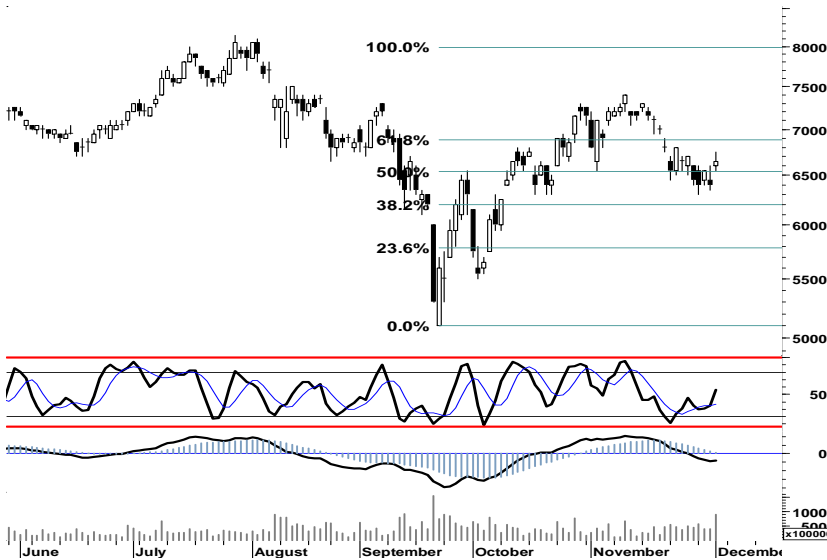


Ditutup pada area pivot 880, menempatkan BISI pada posisi berimbang.

Signal positif yang diperoleh dari fast moving oscillator, diharapkan mampu membawa BISI keluar dari area trading negatif pada basis support 860.

Kami perkirakan BISI akan mencoba bergerak pada area 850 - 900.

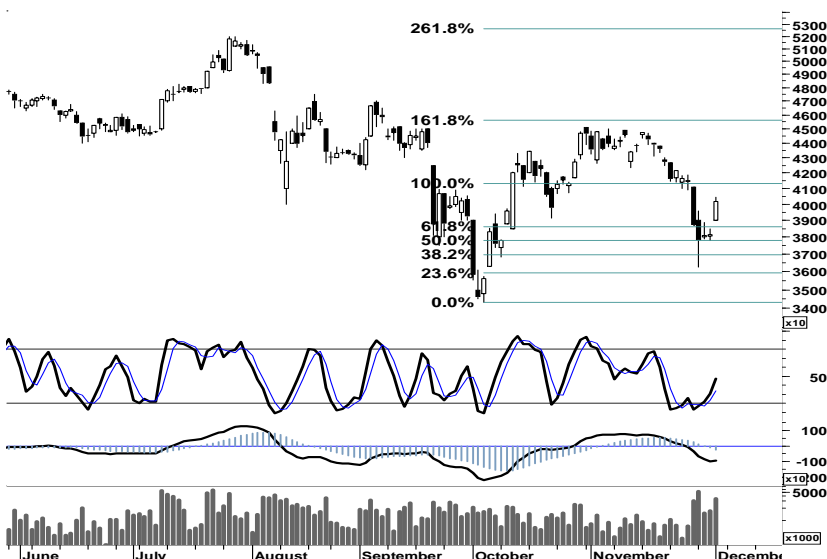
S1	S2	R1	R2
870	860	900	910



Signal positif stochastic pada 50% fibonacci support, diharapkan mampu mendorong penguatan BMRI menguji resistensi pada celah harga 6.950.

Waspada adanya ancaman uji support 6.300, apabila BMRI gagal melakukan penetrasi resistensi 6.850.

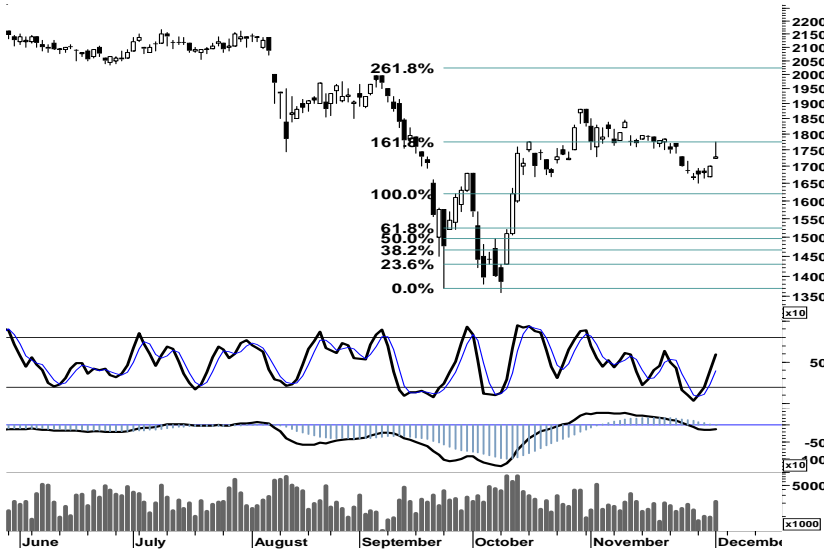
S1	S2	R1	R2
6,550	6,450	6,850	6,950



Secara umum, peluang ITMG untuk dapat melanjutkan rally masih terbuka cukup lebar. Sebagaimana tergambar pada sisa ruang dalam siklus trend resisten, dan juga tendensi arah positif stochastic pada area trading.

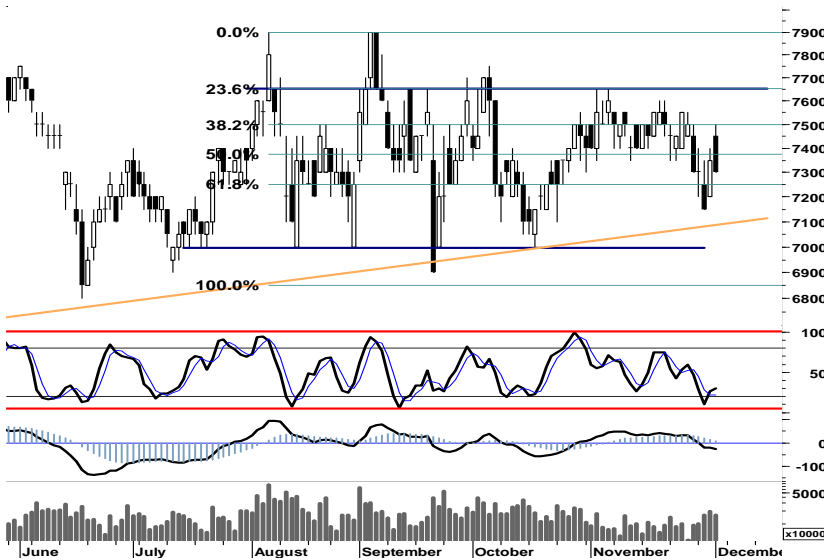
Dengan demikian, kami perkirakan ITMG masih akan bergerak mix menguji arah resistensi 41.350.

S1	S2	R1	R2
39,300	38,450	41,350	42,200



Waspadaai celah harga yang terbentuk pada support 16.900, apabila PTBA gagal melakukan penetrasi resistensi 17.750.

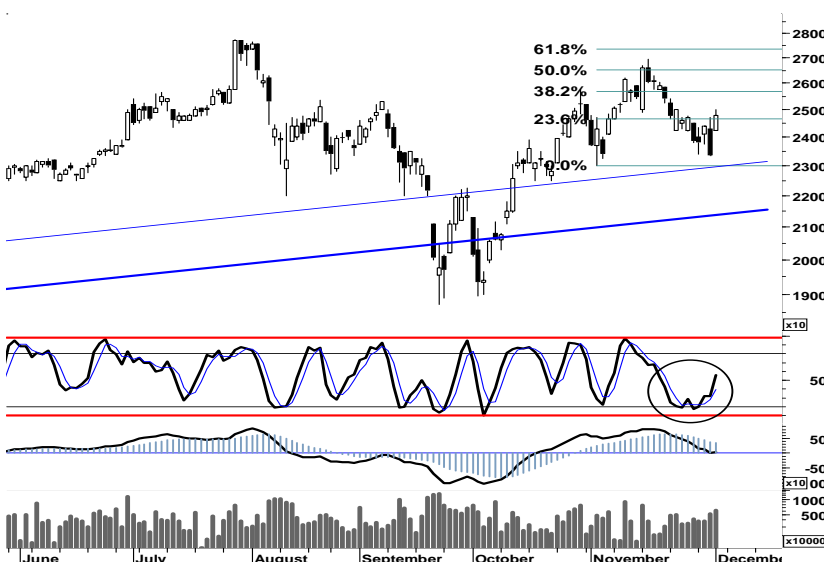
S1	S2	R1	R2
17,150	16,950	17,950	18,150



Tekanan jual pada akhir sesi kemarin, menahan laju pergerakan TLKM menguji penetrasi resisten 7.500 pada 38,2% Fibonacci Retracement.

Diharapkan posisi neutral stochastic (5) dengan kecenderungan arah positif, mampu memberikan dorongan bagi TLKM untuk bergerak mix-positif dalam rentang harga 7.350 - 7.550.

S1	S2	R1	R2
7,250	7,200	7,600	7,650



Masih tersedia ruang bagi UNTR untuk menguji arah positif dengan target resistensi terdekat di level 25.450.

Waspadaai euforia market yang akan cenderung diwarnai oleh aksi profit taking.

S1	S2	R1	R2
24,400	23,950	25,450	25,900

## TRADE DATA

### JCI (IHSG) 3,781.1 66.0 1.78%

YTD (Rp)	2.1%	Volume (m) :	4,584
YTD (USD)	1.9%	Nilai (Rpbn) :	3,328
Moving Avg 20day	3,753	Mkt Cap (Rptr) :	3,439
Moving Avg 50day	3,653	Market P/E (x) :	16.2
Moving Avg 200day	3,750	Market Div. Yield (%) :	2.4

### Indonesia & Sectors +/- (%) YTD (%)

MSCI Indonesia	4,726.6	94.8	2.05	3.96
JII	527.3	6.8	1.31	-1.05
LQ45	669.1	12.7	1.93	1.17
JAKFIN Index	492.7	9.7	0.02	5.58
JAKINFR Index	706.2	12.1	0.02	-13.80
JAKMINE Index	2,559.6	67.4	0.03	-21.82
JAKCONS Index	1,324.8	4.2	0.00	21.02
JAKTRAD Index	569.9	19.3	0.03	20.20
JAKMIND Index	1,269.2	8.5	0.01	31.25
JAKBIND Index	379.8	6.5	0.02	-1.91
JAKPROP Index	208.0	4.6	0.02	2.42
JAKAGRI Index	2,186.2	11.9	0.01	-4.30

### Commodities +/- (%) YTD (%)

CRB Index	313.31	-0.5	-0.16	-5.86
<b>Oil &amp; Gas</b>				
Crude Oil	100.20	-0.2	-0.16	9.65
Natural Gas	3.65	0.1	2.76	-17.19
COAL (Rotterdam)	112.50	-0.3	-0.27	-14.38
COAL (Amsterdam)	112.00	-0.2	-0.18	-11.08
COAL (Australia,wk)	110.85	0.0	0.00	-9.44
<b>Industrial Metals</b>				
Alumunium	2,148.00	37.3	1.76	-12.66
Nickel	16,750	-750	-4.29	-32.32
Tin	20,100	-800	-3.83	-25.28
<b>Precious Metal</b>				
Gold	1,739.80	-5.7	-0.33	22.40
Silver	32.71	-0.0	-0.07	5.82
<b>Soft Commodities</b>				
CPO (Malaysia)	3,062.00	62.0	2.07	-19.72
CPO (Netherlands)	1,040.00	5.0	0.48	-19.07
Rubber	3,418.28	184.6	5.71	-31.55
Corn	601.50	0.3	0.04	-4.37
Wheat	614.25	18.5	3.11	-22.66
Soybeans	1,128.00	-3.3	-0.29	-19.07
Rice (Indonesia)	7,750.00	0.0	0.00	9.15

### Regional Indices +/- (%) YTD (%)

MXWO	MSCI Word	1,184.5	-0.1	-0.01	-7.47
SPX	S&P 500	1,244.6	-2.4	-0.19	-1.04
<b>US</b>					
Dow Jones Industrial		12,020.0	-25.6	-0.21	3.82
Nasdaq	US	2,626.2	5.9	0.22	-1.01
<b>Europe</b>					
EURO 50	Europe	238.5	-1.6	-0.66	-13.53
FTSE	London	5,489.3	-16.1	-0.29	-6.96
DAX	German	6,035.9	-53.0	-0.87	-12.70
CAC	France	3,130.0	-24.7	-0.78	-17.74
SMI	Swiss	5,681.6	29.3	0.52	-11.72
<b>BRIC</b>					
BOVESPA	Brazil	58,143.4	1,268.4	2.23	-16.10
MICEX	Russia	1,505.3	5.7	0.38	-10.82
SENSEX	India	16,483.5	360.0	2.23	-19.63
NIFTY	India	4,936.9	104.8	2.17	-19.52
SHCOMP	China	2,386.9	53.4	2.29	-15.00
SZCOMP	China	1,014.2	20.2	2.03	-21.43

### Developed ASIA

Nikkei	Japan	8,597.4	162.8	1.93	-15.95
TPX	Japan	740.0	11.6	1.59	-17.67
HIS	Hong kong	19,002.3	1,012.9	5.63	-17.51
KOSPI	S.Korea	1,916.2	68.7	3.72	-6.57
TAIEX	Taiwan	7,178.7	274.6	3.98	-19.99
FSSTI	Singapore	2,761.9	59.4	2.20	-13.42

### ASEAN

SET	Thailand	1,019.2	23.8	2.39	-1.32
PCOMP	Philippines	4,290.6	79.6	1.89	2.13
KLCI	Malaysia	1,485.3	13.2	0.89	-2.22
VNINDEX	Vietnam	380.1	-0.6	-0.15	-21.57

### Currency +/- (%) YTD (%)

EURUSD	Euro	1.346	0.002	0.11	0.58
GBPUSD	United Kingdom	1.569	-0.001	-0.09	0.50
USDCHF	Switzerland	0.916	0.003	0.28	-2.07
USDCAD	Canada	1.014	-0.004	-0.34	1.59
AUDUSD	Australia	1.024	-0.004	-0.38	0.11
NZDUSD	New Zealand	0.779	-0.001	-0.14	-0.10
USDJPY	Japan	77.7	0.080	0.10	-4.22
USDCNY	China	6.367	-0.013	-0.20	-3.64
USDHKD	Hongkong	7.769	0.002	0.02	-0.05
USDSGD	Singapore	1.282	0.000	0.02	-0.12
Rupiah	Indonesia	8,998.0	-115.000	-1.26	0.02

### Winners

Stock	Price	(%)	Stock	Price	(%)
ISAT	5,900	10.28	BACA	127	-20.63
UNTR	24,800	6.21	RALS	580	-3.33
ITMG	40,150	5.24	ADMF	11,150	-2.62
PGAS	3,225	4.88	UNVR	17,800	-2.20
BBNI	3,950	3.95	BDMN	4,325	-1.70
BMRI	6,650	3.91	IMAS	12,800	-1.54
BBRI	6,700	3.08	JSMR	3,825	-1.29
GGRM	66,100	1.69	LSIP	2,350	-1.05
BBCA	8,000	1.27	GEMS	2,750	-0.90
ASII	71,500	0.85	TLKM	7,300	-0.68

### Losers

### Value

Value (Rpbn)	Volume (Lot)	Freq	(x)
BMRI 601,480	TMPI 779,008	TMPI	13,580
ASII 304,090	ENRG 750,704	BMRI	4,800
BBRI 279,349	KIJA 390,283	BUMI	3,665
BUMI 226,700	BKSL 326,894	MNCN	3,263
PGAS 198,884	BIPI 254,443	BBRI	2,820
HRUM 152,750	ELTY 222,540	PGAS	2,701
ADRO 149,572	BUMI 216,827	ADRO	2,585
ITMG 140,197	PNLF 208,435	ENRG	2,574
BBCA 139,093	BORN 192,816	ASII	2,386
SMGR 135,959	BMRI 180,395	IGAR	2,333

Code	Last	Ytd Chg(%)	H-5 Chg (%)	Rekomendasi	STO	RSI	MACD	Bollinger Band		Support			Resistance			H-5	
								Top	Bottom	1	2	3	1	2	3	Highest	Lowest
AALI	22,600	-15.67	8.65	StrongSell	90.6	59.8	383.4	23,650	20,450	22,500	22,400	22,200	22,800	23,000	23,100	22,900	20,500
ACES	3,800	33.33	0.00	OverBought	77.8	58.8	97.2	3,975	3,650	3,775	3,750	3,675	3,875	3,950	3,975	3,900	3,600
ADRO	1,960	-26.73	2.62	OverBought	73.7	52.2	(8.8)	1,980	1,870	1,940	1,920	1,900	1,980	2,000	2,020	1,980	1,830
AISA	700	-10.26	1.45	OverBought	69.2	56.9	3.8	710	660	690	675	670	710	715	730	700	650
ANTM	1,680	-32.12	3.70	OverBought	79.2	55.0	(6.6)	1,700	1,590	1,660	1,640	1,620	1,700	1,720	1,740	1,690	1,580
ASII	71,500	31.43	3.03	StrongSell	82.5	58.3	736.4	73,300	68,150	71,150	70,800	70,100	72,200	72,900	73,250	72,550	67,000
BBCA	8,000	24.03	4.58	StrongSell	80.6	54.7	(36.2)	8,250	7,450	7,950	7,900	7,800	8,100	8,200	8,250	8,100	7,450
BBNI	3,950	3.95	6.76	StrongSell	97.2	56.6	(17.7)	4,050	3,625	3,925	3,900	3,875	3,975	4,000	4,025	3,950	3,550
BBRI	6,700	29.47	0.75	Trading	52.0	53.9	9.5	6,800	6,400	6,700	6,650	6,600	6,800	6,850	6,900	6,800	6,350
BDMN	4,325	-21.36	-1.70	Trading	52.0	33.7	(119.9)	4,475	4,325	4,275	4,225	4,100	4,450	4,575	4,625	4,500	4,275
BISI	880	-52.94	-1.12	Trading	47.1	38.7	(28.8)	890	850	870	860	850	890	900	910	900	840
BMRI	6,650	3.10	-0.75	Trading	56.0	47.8	(77.1)	6,750	6,350	6,550	6,450	6,350	6,750	6,850	6,950	6,750	6,300
BSDE	900	2.27	-1.10	Trading	52.2	47.4	(8.6)	920	845	860	820	800	920	940	980	910	820
BTEL	285	21.28	7.55	StrongSell	84.0	56.9	(2.9)	296	259	275	265	255	295	305	315	295	245
BUMI	2,075	-33.60	0.00	OverSold	35.1	46.3	(44.5)	2,100	1,975	2,050	2,000	1,950	2,150	2,200	2,250	2,150	1,980
BWPT	1,200	-8.40	5.26	StrongSell	83.3	60.3	8.4	1,240	1,120	1,190	1,180	1,170	1,210	1,220	1,230	1,210	1,130
ELTY	107	-33.54	0.00	Trading	43.8	43.8	(2.3)	108	104	106	104	102	110	112	114	110	103
EXCL	4,725	-10.00	2.16	OverBought	66.7	43.2	(123.1)	4,775	4,550	4,700	4,675	4,650	4,750	4,775	4,800	4,750	4,500
GGRM	66,100	61.02	8.36	StrongSell	85.1	69.2	1,454.8	68,600	59,650	65,300	64,500	63,650	66,950	67,800	68,600	67,000	60,000
HEXA	8,450	16.55	5.62	StrongSell	92.0	60.0	90.7	8,550	8,100	8,350	8,250	8,150	8,550	8,650	8,750	8,500	7,950
HRUM	7,000	-25.93	-7.89	Accumulate	21.4	39.2	(182.1)	7,400	6,550	6,950	6,850	6,750	7,150	7,250	7,350	7,650	6,700
INCO	3,125	-37.19	-0.79	Trading	45.5	43.4	(60.7)	3,150	3,050	3,100	3,075	3,025	3,175	3,225	3,250	3,200	3,000
INDF	4,875	-1.52	3.72	OverBought	72.0	48.6	(110.8)	4,925	4,600	4,825	4,775	4,750	4,900	4,925	4,975	4,875	4,600
INDY	2,250	-55.88	4.65	OverBought	78.6	47.1	(90.4)	2,325	2,050	2,200	2,150	2,100	2,300	2,350	2,400	2,300	2,000
INTP	15,000	-6.54	0.33	Trading	56.0	49.9	(15.8)	15,350	14,500	14,800	14,550	14,100	15,500	15,950	16,200	15,700	14,500
ISAT	5,900	8.26	14.56	TakeProfit	71.0	70.6	76.6	6,050	4,850	5,650	5,400	5,250	6,050	6,200	6,450	5,950	5,100
ITMG	40,150	-26.06	-3.02	Trading	47.4	45.2	(836.4)	40,500	37,150	39,300	38,450	37,850	40,750	41,350	42,200	41,900	36,250
JSMR	3,825	7.75	0.66	OverBought	75.0	46.1	(10.3)	3,925	3,775	3,800	3,750	3,700	3,900	3,950	4,000	3,900	3,750
KLBF	3,550	6.77	5.19	OverBought	71.4	59.5	18.9	3,650	3,400	3,550	3,525	3,500	3,600	3,625	3,650	3,600	3,350
LSIP	2,350	-7.48	1.08	StrongSell	80.0	58.2	61.9	2,400	2,325	2,350	2,325	2,300	2,400	2,425	2,450	2,400	2,300
MAPI	5,250	89.19	0.00	Trading	42.1	54.5	99.3	5,400	5,200	5,200	5,100	5,000	5,400	5,500	5,600	5,450	5,150
PGAS	3,225	-27.93	10.26	StrongSell	94.1	65.7	40.0	3,325	2,875	3,175	3,100	3,075	3,275	3,300	3,375	3,225	2,850
PTBA	17,300	-27.77	2.67	Trading	59.3	49.3	(100.4)	17,500	16,550	17,150	16,950	16,650	17,650	17,950	18,150	17,750	16,500
RALS	580	-32.56	1.75	OverBought	73.9	40.7	(17.0)	620	570	555	530	495	615	650	675	620	540
SGRO	3,025	-6.92	2.54	OverBought	65.0	52.0	6.4	3,075	2,975	3,000	2,950	2,900	3,100	3,150	3,200	3,100	2,900
SMCB	1,920	-13.71	5.49	StrongSell	86.8	59.3	2.9	1,970	1,830	1,910	1,900	1,890	1,930	1,940	1,950	1,930	1,800
SMGR	9,400	-4.57	6.82	StrongSell	85.0	57.8	46.3	9,650	8,750	9,350	9,300	9,200	9,500	9,600	9,650	9,550	8,650
SMRA	1,050	-2.78	0.96	OverBought	72.0	43.9	(17.4)	1,090	1,010	1,040	1,030	1,010	1,070	1,090	1,100	1,080	990
TINS	1,760	-38.25	2.33	OverBought	72.2	43.5	(34.3)	1,780	1,710	1,750	1,740	1,720	1,780	1,800	1,810	1,780	1,700
TLKM	7,300	-8.75	-2.67	OverSold	30.4	43.8	(32.7)	7,450	7,150	7,250	7,200	7,050	7,450	7,600	7,650	7,550	7,150
UNTR	24,800	2.06	0.40	Trading	55.7	52.3	60.4	25,150	23,150	24,400	23,950	23,650	25,150	25,450	25,900	25,000	23,350
UNVR	17,800	10.90	2.30	TakeProfit	72.9	65.5	504.1	18,400	17,500	17,350	16,850	16,150	18,550	19,250	19,750	18,750	16,800

S1 = Support 1      S2 = Support 2      S3 = Support 3  
 R1 = Resisten 1      R2 = Resisten 2      R2 = Resisten 2  
 STO = Stochastic Oscillator  
 RSI = Relative Strength Index  
 MACD = Moving Average Convergence Divergence  
 H-5 = 5 hari sebelumnya

## RESEARCH TEAM

---

<b>Andrian Tanuwijaya</b>	Equity Analyst	(andrian.tanuwijaya@trimegah.com)
<b>Hanel Topada Era Tania</b>	Equity Analyst	(hanel.tania@trimegah.com)
<b>Paul Raymond Widjaja</b>	Equity Analyst	(paul.widjaja@trimegah.com)
<b>Michele Gabriela</b>	Equity Analyst	(michele.gabriela@trimegah.com)
<b>T Hedy Arifien</b>	Technical Analyst	(hedy@trimegah.com)
<b>Rovandi</b>	Research Assistant	(rovandi@trimegah.com)

## EQUITY CAPITAL MARKET TEAM

---

<b>Nathanael Benny Prasetyo</b>	Head of Retail ECM	(benny.prasetyo@trimegah.com)
<b>Windra Djulnaily</b>	Pluit, Jakarta	(windra.djulnaily@trimegah.com)
<b>Ariawan Anwar</b>	Artha Graha, Jakarta	(ariawan.anwar@trimegah.com)
<b>Ferry Zabur</b>	Kelapa Gading, Jakarta	(ferry.zabur@trimegah.com)
<b>Wirjawan Joesoef</b>	Mangga Dua, Jakarta	(iwan@trimegah.com)
<b>Lukman Abdul Azis</b>	Kebon Jeruk, Jakarta	(lukman@trimegah.com)
<b>Untung Wijaya</b>	Semarang, Jawa Tengah	(untung.wijaya@trimegah.com)
<b>Sonny Muljadi</b>	Surabaya, Jawa Timur	(sonny.muljadi@trimegah.com)
<b>Ni luh Ketut Sri Agustini</b>	Denpasar, Bali	(sri.agustini@trimegah.com)
<b>Philip Fernando Suwandi</b>	Makassar, Sulawesi Selatan	(philip.fs@trimegah.com)
<b>agus.jatmiko</b>	Balikpapan, Kalimantan Timur	(agus.jatmiko@trimegah.com)
<b>Asep Saepudin</b>	Bandung, Jawa Barat	(asep.saepudin@trimegah.com)
<b>Ariffianto</b>	Cirebon, Jawa Barat	(ariffianto@trimegah.com)
<b>Very Wijaya</b>	Medan, Sumatera Utara	(very.wijaya@trimegah.com)
<b>Tantie Rivi Watie</b>	Pekanbaru, Riau	(tantierw@trimegah.com)
<b>Agus Bambang Suseno</b>	Solo, Jawa Tengah	(agus.suseno@trimegah.com)
<b>Untung Wijaya</b>	Yogyakarta, Jawa Tengah	(untung.wijaya@trimegah.com)
<b>Donny Kristanto Setiadi</b>	Palembang, Sumatra Selatan	(donny.kristanto@trimegah.com)
<b>Rr. Putri Ayu Erikusuma</b>	Malang, Jawa Timur	(putri.ayu@trimegah.com)

**PT Trimegah Securities Tbk**  
18<sup>th</sup> Fl, Artha Graha Building  
Jl. Jend. Sudirman Kav. 52-53  
Jakarta 12190, INDONESIA  
Tel : (6221) 2924 9088 Fax : (6221) 2924 9163

## DISCLAIMER

This report has been prepared by PT Trimegah Securities Tbk on behalf of itself and its affiliated companies and is provided for information purposes only. Under no circumstances is it to be used or considered as an offer to sell, or a solicitation of any offer to buy. This report has been produced independently and the forecasts, opinions and expectations contained herein are entirely those of Trimegah Securities.

While all reasonable care has been taken to ensure that information contained herein is not untrue or misleading at the time of publication, Trimegah Securities makes no representation as to its accuracy or completeness and it should not be relied upon as such. This report is provided solely for the information of clients of Trimegah Securities who are expected to make their own investment decisions without reliance on this report. Neither Trimegah Securities nor any officer or employee of Trimegah Securities accept any liability whatsoever for any direct or consequential loss arising from any use of this report or its contents. Trimegah Securities and/or persons connected with it may have acted upon or used the information herein contained, or the research or analysis on which it is based, before publication. Trimegah Securities may in future participate in an offering of the company's equity securities.