

IHSG 3.620,7 -2,1 -0,06%

Ulasan Pasar



Rangkaian sentimen negatif external masih mencoba menekan pergerakan IHSG pada perdagangan di akhir pekan kemarin dengan mencatatkan nilai pelemahan tipis -0,06% dengan ditutup pada level 3.620.

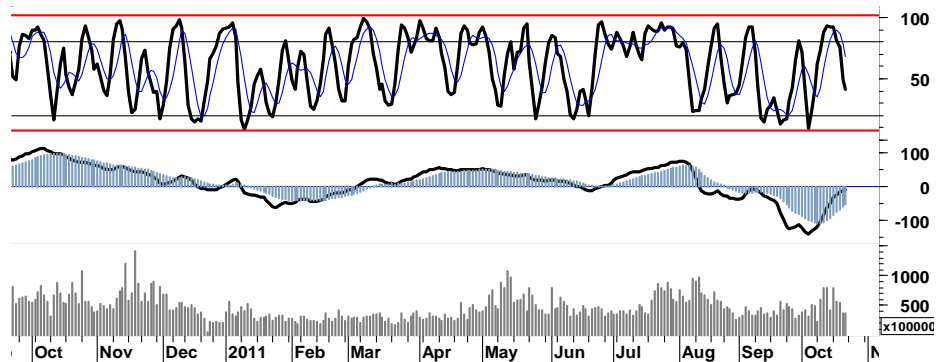
Pada saat yang bersamaan, para pelaku asing melakukan trading dengan mencatatkan nilai penjualan bersih sebesar Rp300,50miliar.

Sebagaimana kami katakan menjelang akhir pekan lalu, IHSG diharapkan mampu bertahan dalam zona Fibon Ratio 38,2% dan 50% atau setara dengan 3.602 dan 3.691 berbasis support normal di level 3.580.

Dilain kesempatan, sentimen positif dimana optimisme muncul dari ekspektasi perumusan penyelesaian krisis utang Eropa yang sedang dilakukan oleh para regulator serta pemimpin di Eropa. Hal tersebut merupakan katalis positif yang mengakibatkan pergerakan indeks di Eropa berhasil menguat. DAX maupun CAC membukukan nilai positif masing-masing sebesar

3.5% dan 2,8%, yang serta merta diikuti oleh bursa-bursa utama di Amerika DJI, S&P500 serta Nasdaq ditutup menguat masing-masing sebesar 2,3%, 1,9% serta 1,5%.

Indikasi positif MACD dan alur distribusi yang mencoba merambah zona hijau, merupakan beberapa indikator lain yang diharapkan turut memberikan dorongan bagi IHSG yang masih memiliki peluang untuk bertahan pada basis support 3.580; stop-loss support 3.520. Dengan demikian pada perdagangan di awal pekan ini merupakan peluang bagi IHSG untuk melakukan technical rebound menguji penetrasi resistensi 3.670, serta memanfaatkan peluang untuk bergerak dalam rentang harga 3.620 - 3.720.



S1	S2	R1	R2
3,595	3,570	3,645	3,670

Saham Pilihan

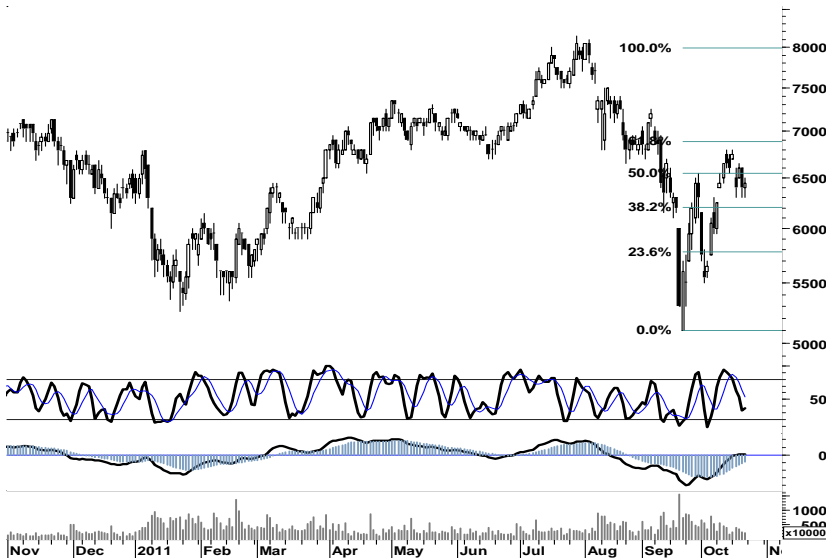
Saham	Harga (Rp)	Rekomendasi	Stochastic	RSI	BB Top	BB Bottom	S1	S2	R1	R2
ASII	66,100	Trading	49.04	51.89	69,900	65,400	65,200	64,250	68,450	69,400
BMRI	6,450	OverSold	36.67	50.19	6,800	6,250	6,350	6,250	6,650	6,750
ELTY	115	OverSold	21.95	46.73	124	109	113	111	119	121
EXCL	5,000	StrongBuy	14.29	49.35	5,325	4,825	4,950	4,875	5,125	5,200
SMGR	8,750	Trading	59.46	54.55	9,150	8,450	8,650	8,550	8,850	8,950
UNTR	22,800	OverSold	34.52	53.70	23,600	22,500	22,550	22,300	23,300	23,550



Basis support 65.500 pada perdagangan akhir pekan kemarin, berhasil menahan laju tekanan terhadap saham ASII.

Diharapkan sentimen positif eksternal dapat memberikan angin segar pada ASII untuk menguji resistensi 69.000, setidaknya melakukan penetrasi 68.450.

S1	S2	R1	R2
65,200	64,250	68,450	69,400 x



Dengan tetap mewaspadai celah support 6.250 ataupun retracement 38,2% support 6.150, sentimen positif regional diharapkan mampu membawa BMRI menguji penetrasi celah resisten 6.750/6.700.

S1	S2	R1	R2
6,350	6,250	6,650	6,750



Dalam perimbangan kondisi di pivot support serta mulai terbatanya ruang tekanan pada stochastic oscillator, membuka peluang bagi ELTY untuk bertumpu pada retracement support 50% di level 113 selanjutnya melakukan penetrasi resistensi 118.

S1	S2	R1	R2
113	111	119	121

EXCL

5,000

StrongBuy



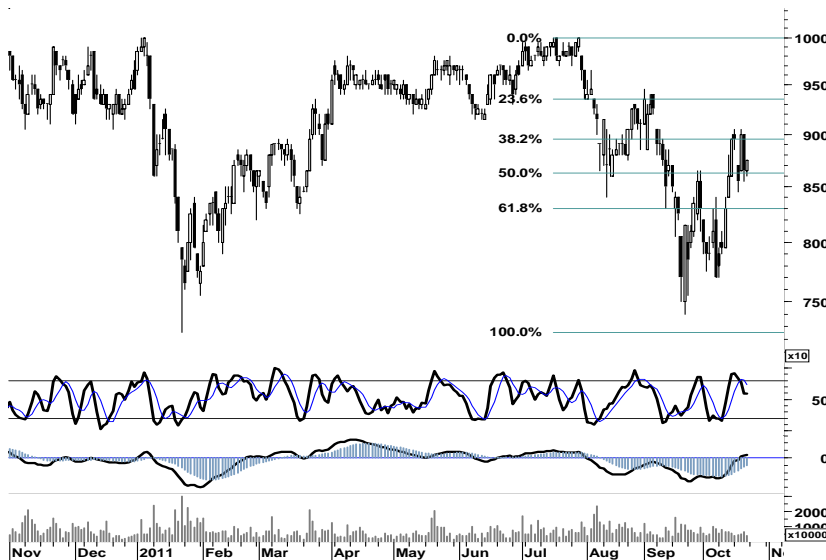
Secara umum ancaman bearish masih mewarnai pergerakan pada saham EXCL. Terbatasnya ruang tekanan pada stochastic, diharapkan mampu mendorong EXCL untuk melakukan technical rebound serta menembus resistensi 5.050 pada retracement 23,6% menuju resistensi selanjutnya di level 5.350.

S1	S2	R1	R2
4,950	4,875	5,125	5,200

SMGR

8,750

Trading



Retracement support 50% di 8.600 yang sekaligus merupakan neckline double bottom, diharapkan mampu mendorong SMGR mencapai resistensi pada celah harga 9.200.

S1	S2	R1	R2
8,650	8,550	8,850	8,950

UNTR

22,800

OverSold



Ditutup pada kondisi berimbang pivot, seiring munculnya minat beli pada akhir sesi perdagangan jum'at lalu diharapkan mampu memberikan dukungan sentimen positif terhadap UNTR.

Setidaknya pada perdagangan di awal pekan ini, support 22.550 kami perkirakan mampu menjadi titik balik support bagi UNTR untuk bergerak dalam interval harga 23.000 - 23.900.

S1	S2	R1	R2
22,550	22,300	23,300	23,550

TRADE DATA

JCI (IHSG) 3,620.7 -2.1 -0.06%

YTD (Rp)	-2.2%	Volume (m) :	4,171
YTD (USD)	-1.2%	Nilai (Rpbn) :	3,328
Moving Avg 20day	3,520	Mkt Cap (Rpbn) :	3,439
Moving Avg 50day	3,710	Market P/E (x) :	16.2
Moving Avg 200day	3,719	Market Div. Yield (%) :	2.4

Indonesia & Sectors +/- (%) YTD (%)

MSCI Indonesia	4,514.6	-10.7	-0.24	-0.70
JII	503.5	-1.9	-0.38	-5.53
LQ45	640.2	-1.0	-0.16	-3.20
JAKFIN Index	481.5	0.5	0.00	3.17
JAKINFR Index	684.7	1.7	0.00	-16.42
JAKMINE Index	2,569.8	6.7	0.00	-21.51
JAKCONS Index	1,216.1	-0.5	-0.00	11.09
JAKTRAD Index	504.7	0.5	0.00	6.46
JAKMIND Index	1,186.3	-26.5	-0.02	22.67
JAKBIND Index	369.8	0.9	0.00	-4.51
JAKPROP Index	214.1	1.4	0.01	5.39
JAKAGRI Index	1,995.4	18.0	0.01	-12.65

Commodities +/- (%) YTD (%)

CRB Index	311.08	3.4	1.11	-6.53
Oil & Gas				
Crude Oil	87.40	2.1	2.46	-4.36
Natural Gas	3.63	-0.0	-0.03	-17.62
COAL (Rotterdam)	116.45	2.1	1.84	-11.38
COAL (Amsterdam)	115.08	0.8	0.73	-8.63
COAL (Australia,wk)	120.15	0.0	0.00	-1.84
Industrial Metals				
Aluminium	2,113.25	40.3	1.94	-14.07
Nickel	18,800	795	4.42	-24.04
Tin	21,675	475	2.24	-19.42
Precious Metal				
Gold	1,636.10	23.2	1.44	15.10
Silver	31.19	0.9	3.01	0.92
Soft Commodities				
CPO (Malaysia)	2,881.00	21.0	0.73	-24.46
CPO (Netherlands)	1,005.00	10.0	1.01	-21.79
Rubber	3,613.84	7.1	0.20	-27.63
Corn	649.25	-0.3	-0.04	3.22
Wheat	632.00	1.3	0.20	-20.43
Soybeans	1,212.25	-12.8	-1.04	-13.02
Rice (Indonesia)	7,700.00	0.0	0.00	8.45

Winners

Stock	Price	(%)	Stock	Price	(%)
BUMI	2,200	4.76	TFCO	520	-8.77
SMRA	1,140	4.59	DSSA	13,100	-4.38
LSIP	2,050	2.50	ASII	66,100	-2.51
UNVR	15,950	1.92	ITMG	39,750	-2.09
SMGR	8,750	1.16	GGRM	54,200	-2.08
BDMN	4,925	1.03	KLBF	3,350	-1.47
EXCL	5,000	1.01	BBNI	3,825	-1.29
CPIN	2,550	0.99	UNTR	22,800	-0.65
BMRI	6,450	0.78	BYAN	19,200	-0.52
ADRO	1,910	0.53	MYOH	87	-2.30

Losers

Regional Indices +/- (%) YTD (%)

MXWO	MSCI World	1,194.3	27.4	2.35	-6.70
SPX	S&P 500	1,238.3	22.9	1.88	-1.54
US					
Dow Jones Industrial		11,808.8	267.0	2.31	2.00
Nasdaq	US	2,637.5	38.8	1.49	-0.58
Europe					
EURO 50	Europe	238.9	5.9	2.51	-13.37
FTSE	London	5,488.7	104.0	1.93	-6.97
DAX	Germany	5,971.0	204.5	3.55	-13.64
CAC	France	3,171.3	87.3	2.83	-16.65
SMI	Swiss	5,753.5	95.9	1.69	-10.60
BRIC					
BOVESPA	Brazil	55,255.2	1,245.3	2.31	-20.27
MICEX	Russia	1,447.0	28.2	1.98	-14.28
SENSEX	India	16,785.6	-151.3	-0.89	-18.16
NIFTY	India	5,050.0	-41.9	-0.82	-17.68
SHCOMP	China	2,317.3	-14.1	-0.60	-17.48
SZCOMP	China	959.1	-15.7	-1.61	-25.70

Developed ASIA

Nikkei	Japan	8,678.9	-3.3	-0.04	-15.15
TPX	Japan	744.2	-1.8	-0.24	-17.20
HIS	Hong kong	18,025.7	42.6	0.24	-21.75
KOSPI	S. Korea	1,838.4	33.3	1.84	-10.37
TAIEX	Taiwan	7,254.5	10.2	0.14	-19.15
FSSTI	Singapore	2,712.4	18.4	0.68	-14.97

ASEAN

SET	Thailand	916.3	7.2	0.80	-11.27
PCOMP	Philippines	4,166.6	-4.0	-0.10	-0.82
KLCI	Malaysia	1,438.8	-2.4	-0.16	-5.27
VNINDEX	Vietnam	411.0	7.3	1.81	-15.19

Currency +/- (%) YTD (%)

EURUSD	Euro	1.390	0.012	0.84	3.83
GBPUSD	United Kingdom	1.595	0.016	1.03	2.18
USDCHF	Switzerland	0.883	-0.011	-1.26	-5.64
USDCAD	Canada	1.007	-0.009	-0.87	0.86
AUDUSD	Australia	1.038	0.015	1.42	1.40
NZDUSD	New Zealand	0.803	0.010	1.27	2.94
USDJPY	Japan	76.3	-0.510	-0.66	-5.95
USDCNY	China	6.384	-0.000	-0.01	-3.38
USDHKD	Hongkong	7.782	0.002	0.03	0.11
USDSGD	Singapore	1.273	-0.002	-0.13	-0.81
Rupiah	Indonesia	8,908.0	30.000	0.34	-0.98

Value

Value (Rpbn)	Volume (Lot)	Freq (x)
ASII 307,545	ENRG 1,793,227	PICO 6,887
BBRI 227,255	STAR 405,631	STAR 5,477
BUMI 186,825	AMAG 301,847	APIC 4,996
ENRG 146,875	BKSL 295,343	ENRG 4,437
BMRI 141,676	ELTY 288,394	TMPI 4,082
BBCA 135,584	ASRI 234,989	AMAG 3,067
PGAS 86,491	CFIN 193,135	ASII 2,841
ADRO 85,684	BUMI 174,290	BBRI 2,761
TLKM 82,323	APIC 171,079	BUMI 2,302
GGRM 55,291	BNBR 139,522	ADRO 2,293

Code	Last	Ytd Chg(%)	H-5 Chg (%)	Rekomendasi	STO	RSI	MACD	Bollinger Band		Support			Resistance			H-5	
								Top	Bottom	1	2	3	1	2	3	Highest	Lowest
AALI	19,250	-28.17	2.39	OverBought	70.0	50.6	(336.6)	19,750	18,800	19,100	18,950	18,800	19,400	19,550	19,700	19,650	18,500
ACES	3,400	19.30	0.00	StrongBuy	16.7	56.1	35.8	3,450	3,375	3,400	3,375	3,375	3,425	3,425	3,450	3,475	3,375
ADRO	1,910	-28.60	0.53	Trading	58.1	52.1	(0.7)	2,000	1,850	1,890	1,870	1,850	1,930	1,950	1,970	1,990	1,840
AISA	670	-14.10	-1.47	OverSold	35.7	49.1	(10.9)	685	635	655	640	625	685	700	715	690	640
ANTM	1,690	-31.72	2.42	Trading	44.2	54.9	(3.6)	1,760	1,630	1,680	1,660	1,650	1,710	1,720	1,740	1,790	1,610
ASII	66,100	21.51	-1.27	Trading	49.0	51.9	865.1	69,900	65,400	65,200	64,250	63,100	67,300	68,450	69,400	69,500	65,400
BBCA	7,650	18.60	-3.77	OverSold	29.4	47.8	3.3	8,050	7,450	7,550	7,450	7,300	7,800	7,950	8,050	8,100	7,500
BBNI	3,825	0.66	2.68	StrongSell	81.5	54.4	8.0	3,925	3,800	3,800	3,750	3,700	3,900	3,950	4,000	3,900	3,675
BBRI	6,300	21.74	-3.82	OverSold	25.0	52.7	79.9	6,700	6,100	6,200	6,100	6,000	6,400	6,500	6,600	6,750	6,150
BDMN	4,925	-10.45	-2.48	OverSold	33.3	54.2	45.3	5,175	4,775	4,850	4,750	4,700	5,000	5,050	5,150	5,200	4,800
BISI	980	-47.59	0.00	OverSold	29.6	46.5	(31.6)	1,025	945	965	950	935	995	1,010	1,025	1,040	950
BMRI	6,450	0.00	-2.27	OverSold	36.7	50.2	13.3	6,800	6,250	6,350	6,250	6,150	6,550	6,650	6,750	6,800	6,300
BSDE	920	4.55	2.22	OverBought	65.2	55.1	4.9	955	890	900	875	850	950	975	1,000	950	870
BTEL	290	23.40	-1.69	Trading	46.7	36.9	(11.7)	300	284	287	284	282	292	294	297	305	280
BUMI	2,200	-29.60	-2.22	Trading	48.2	50.8	(54.8)	2,300	2,025	2,125	2,050	2,000	2,250	2,300	2,375	2,350	1,980
BWPT	1,150	-12.21	8.49	TakeProfit	79.5	60.4	0.6	1,170	1,110	1,140	1,130	1,110	1,170	1,190	1,200	1,170	1,040
ELTY	115	-28.57	-3.36	OverSold	22.0	46.7	(3.2)	124	109	113	111	109	117	119	121	126	112
EXCL	5,000	-4.76	-2.91	StrongBuy	14.3	49.4	24.8	5,325	4,825	4,950	4,875	4,825	5,075	5,125	5,200	5,450	4,925
GGRM	54,200	32.03	-5.08	OverSold	22.4	48.5	599.4	56,800	53,800	53,400	52,550	51,000	55,800	57,350	58,200	58,950	54,050
HEXA	7,300	0.69	-0.68	Trading	47.1	47.5	(79.2)	7,450	7,300	7,300	7,300	7,250	7,350	7,400	7,400	7,450	7,200
HRUM	7,450	-21.16	-3.25	OverSold	21.1	48.9	(41.1)	7,950	7,100	7,350	7,250	7,150	7,550	7,650	7,750	7,950	7,300
INCO	3,150	-36.68	1.61	StrongBuy	18.2	48.8	(41.9)	3,450	2,975	3,125	3,100	3,050	3,200	3,250	3,275	3,475	3,100
INDF	5,450	10.10	-1.80	OverBought	60.6	53.4	13.5	5,650	5,300	5,350	5,250	5,150	5,550	5,650	5,750	5,700	5,150
INDY	2,475	-51.47	-4.81	OverSold	23.4	44.5	(55.6)	2,850	2,300	2,400	2,325	2,250	2,550	2,625	2,700	2,850	2,400
INTP	14,250	-11.21	-3.72	OverSold	36.8	52.8	179.8	14,900	13,950	13,900	13,550	13,200	14,600	14,950	15,300	15,150	13,900
ISAT	4,900	-10.09	-2.00	OverSold	26.5	43.1	(131.9)	4,975	4,825	4,875	4,850	4,825	4,925	4,950	4,975	5,100	4,800
ITMG	39,750	-26.80	-4.33	StrongBuy	18.8	46.2	(185.1)	43,600	38,450	38,900	38,050	36,950	40,850	41,950	42,800	43,450	39,150
JSMR	3,850	8.45	1.32	Trading	59.4	52.9	(25.1)	3,950	3,650	3,825	3,775	3,725	3,925	3,975	4,025	3,925	3,625
KLBF	3,350	0.75	-0.74	Trading	48.0	50.7	20.1	3,475	3,325	3,325	3,300	3,250	3,400	3,450	3,475	3,525	3,300
LSIP	2,050	-19.29	1.23	OverSold	23.8	51.5	(19.5)	2,125	1,975	2,025	1,975	1,950	2,100	2,125	2,175	2,175	2,000
MAPI	4,650	67.57	-5.10	OverSold	35.8	53.0	99.4	5,000	4,575	4,575	4,475	4,350	4,800	4,925	5,025	5,150	4,600
PGAS	2,900	-35.20	8.41	StrongSell	93.8	57.9	12.2	3,025	2,675	2,875	2,850	2,825	2,925	2,950	2,975	2,900	2,625
PTBA	16,800	-29.85	-1.75	Trading	44.9	51.5	(44.6)	17,750	16,350	16,700	16,600	16,450	16,950	17,100	17,200	17,750	16,700
RALS	660	-23.26	-2.94	Trading Sell	31.3	40.3	(18.9)	695	640	20,870	20,870	20,870	20,870	20,870	20,870	700	650
SGRO	2,975	-8.46	2.59	Trading	57.1	51.8	(50.7)	3,050	2,875	2,925	2,875	2,850	3,000	3,025	3,075	3,025	2,850
SMCB	1,850	-16.85	-2.63	Trading	53.3	51.6	(0.0)	1,930	1,820	1,820	1,790	1,760	1,880	1,910	1,940	1,940	1,780
SMGR	8,750	-11.17	-2.23	Trading	59.5	54.5	64.8	9,150	8,450	8,650	8,550	8,500	8,800	8,850	8,950	9,050	8,450
SMRA	1,140	5.56	0.00	Trading	56.7	54.2	(5.3)	1,180	1,090	1,120	1,090	1,080	1,160	1,170	1,200	1,170	1,080
TINS	1,830	-35.79	-0.54	OverSold	38.5	49.1	(36.6)	1,920	1,780	1,820	1,810	1,790	1,850	1,870	1,880	1,920	1,780
TLKM	7,250	-9.38	2.11	OverBought	70.0	49.1	(39.7)	7,350	7,150	7,250	7,200	7,150	7,350	7,400	7,450	7,350	7,000
UNTR	22,800	-6.17	-1.08	OverSold	34.5	53.7	154.5	23,600	22,500	22,550	22,300	22,050	23,050	23,300	23,550	23,900	22,500
UNVR	15,950	-0.62	1.59	Trading	56.4	52.0	(106.1)	16,100	15,450	15,700	15,450	15,200	16,200	16,450	16,700	16,200	15,250

S1 = Support 1 S2 = Support 2 S3 = Support 3
 R1 = Resisten 1 R2 = Resisten 2 R2 = Resisten 2
 STO = Stochastic Oscillator
 RSI = Relative Strength Index
 MACD = Moving Average Convergence Divergence
 H-5 = 5 hari sebelumnya

RESEARCH TEAM

Andrian Tanuwijaya	Equity Analyst	(andrian.tanuwijaya@trimegah.com)
Hanel Topada Era Tania	Equity Analyst	(hanel.tania@trimegah.com)
Paul Raymond Widjaja	Equity Analyst	(paul.widjaja@trimegah.com)
Michele Gabriela	Equity Analyst	(michele.gabriela@trimegah.com)
T Hedy Arifien	Technical Analyst	(hedy@trimegah.com)
Rovandi	Research Assistant	(rovandi@trimegah.com)

EQUITY CAPITAL MARKET TEAM

Nathanael Benny Prasetyo	Head of Retail ECM	(benny.prasetyo@trimegah.com)
Windra Djulnaily	Pluit, Jakarta	(windra.djulnaily@trimegah.com)
Ariawan Anwar	Artha Graha, Jakarta	(ariawan.anwar@trimegah.com)
Ferry Zabur	Kelapa Gading, Jakarta	(ferry.zabur@trimegah.com)
Wirjawan Joesoef	Mangga Dua, Jakarta	(iwan@trimegah.com)
Lukman Abdul Azis	Kebon Jeruk, Jakarta	(lukman@trimegah.com)
Untung Wijaya	Semarang, Jawa Tengah	(untung.wijaya@trimegah.com)
Sonny Muljadi	Surabaya, Jawa Timur	(sonny.muljadi@trimegah.com)
Ni luh Ketut Sri Agustini	Denpasar, Bali	(sri.agustini@trimegah.com)
Philip Fernando Suwandi	Makassar, Sulawesi Selatan	(philip.fs@trimegah.com)
agus.jatmiko	Balikpapan, Kalimantan Timur	(agus.jatmiko@trimegah.com)
Asep Saepudin	Bandung, Jawa Barat	(asep.saepudin@trimegah.com)
Ariffianto	Cirebon, Jawa Barat	(ariffianto@trimegah.com)
Very Wijaya	Medan, Sumatera Utara	(very.wijaya@trimegah.com)
Tantie Rivi Watie	Pekanbaru, Riau	(tantierw@trimegah.com)
Agus Bambang Suseno	Solo, Jawa Tengah	(agus.suseno@trimegah.com)
Untung Wijaya	Yogyakarta, Jawa Tengah	(untung.wijaya@trimegah.com)
Donny Kristanto Setiadi	Palembang, Sumatra Selatan	(donny.kristanto@trimegah.com)
Rr. Putri Ayu Erikusuma	Malang, Jawa Timur	(putri.ayu@trimegah.com)

PT Trimegah Securities Tbk
18th Fl, Artha Graha Building
Jl. Jend. Sudirman Kav. 52-53
Jakarta 12190, INDONESIA
Tel : (6221) 2924 9088 Fax : (6221) 2924 9163

DISCLAIMER

This report has been prepared by PT Trimegah Securities Tbk on behalf of itself and its affiliated companies and is provided for information purposes only. Under no circumstances is it to be used or considered as an offer to sell, or a solicitation of any offer to buy. This report has been produced independently and the forecasts, opinions and expectations contained herein are entirely those of Trimegah Securities.

While all reasonable care has been taken to ensure that information contained herein is not untrue or misleading at the time of publication, Trimegah Securities makes no representation as to its accuracy or completeness and it should not be relied upon as such. This report is provided solely for the information of clients of Trimegah Securities who are expected to make their own investment decisions without reliance on this report. Neither Trimegah Securities nor any officer or employee of Trimegah Securities accept any liability whatsoever for any direct or consequential loss arising from any use of this report or its contents. Trimegah Securities and/or persons connected with it may have acted upon or used the information herein contained, or the research or analysis on which it is based, before publication. Trimegah Securities may in future participate in an offering of the company's equity securities.