

Ulasan Pasar

IHSG kemarin memang berhasil ditutup menembus trend turunnya. Akan tetapi, IHSG masih ditutup dibawah resisten dari kisaran mendatar (flat range) 2.020 - 2.060. Dilihat posisi bursa regional yang cenderung terkoreksi, IHSG sepertinya sulit untuk bertahan diatas trend naiknya, mengingat untuk bertahan, IHSG juga harus ditutup diatas 2.056 (titik terendah kemarin) untuk mempertahankan trend naiknya. Jadi, yang perlu kita lihat hari ini adalah: apakah IHSG masih bertahan di kisaran 2.020 - 2.060. Jika suport 2.020 ditembus, berarti kisaran 1.980 - 1.990 akan menjadi tujuan awalnya.

BEI 2.065,8

Change :	0,28%
Transaction Volume (m) :	5.761,8
Transaction Value (Rpbn) :	3.303,8
Mkt Cap (Rptr) :	1.622,1
Market P/E (x) :	13,1
Market Div. Yield (%) :	3,4

Global Indices		Chg	(%)
Dow Jones	8.280,7	-223,3	-2,6
Nasdaq	1.796,5	-49,2	-2,7
Nikkei	9.876,2	-63,8	-0,6
ST Times	2.320,8	-31,7	-1,3
FTSE	4.234,3	-106,4	-2,5
Hang Seng	18.178,1	-200,7	-1,1

Dual Listing (NYSE)		Chg	(%)
ISAT	24,7 5.049,3	0,4	1,8%
TLKM	31,8 8.106,6	0,1	0,2%

Commodity Price		Chg	(%)
Crude OIL (NYMEX)	66,7	-2,6	-3,7%
Gold (LME Spot)	931,0	-10,3	-1,1%
Nickel (LME 3M)	16.450	-45	-0,3%
Tins (LME 3M)	14.300	-200	-1,4%
CPO (Rotterdam CIF)	658	-5,0	-0,8%
Rubber (Tokyo 1M)	1.639	35,8	2,2%
Coal (Weekly 26/6)	68,7	0,0	0,0%

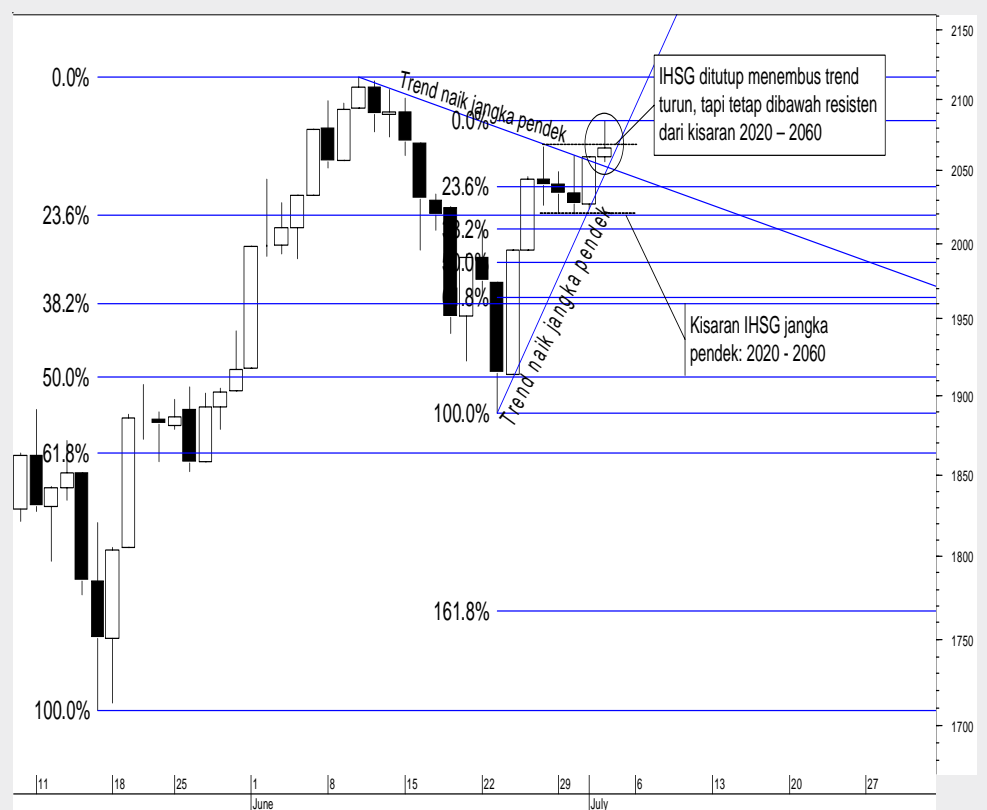
Market Movers		Chg	(%)
DOID	1.110	190	17,1%
TLKM	8.200	300	3,7%
BBCA	3.725	125	3,4%
UNVR	10.000	300	3,0%
BBRI	6.600	150	2,3%
ASII	23.250	-500	-2,2%
BUMI	1.840	-40	-2,2%
SMGR	5.050	-150	-3,0%
BDMN	4.575	-200	-4,4%
PWON	270	-80	-29,6%

Kurs			
BI Rate	-		7,00%
US\$	-	IDR	10.213,00
Yen	-	IDR	106,45
SGD	-	IDR	7.027,45
EUR	-	IDR	14.301,26

Corporate Action

ASRI	Cum Deviden	3-Jul-09
IPO	Inovisi Infracom	3-Jul-09
SONA	RUPSLB	3-Jul-09
MITI	RUPSLB	7-Jul-09
BLTA	Cum Deviden	7-Jul-09

Chart : BEI

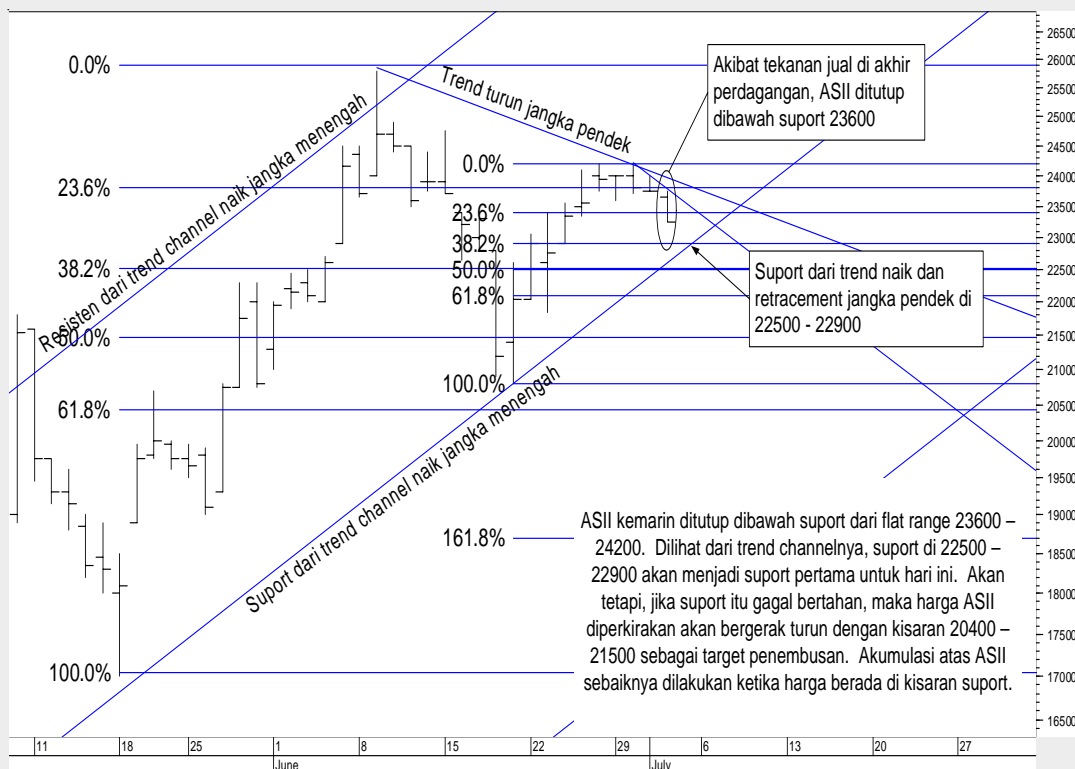


Saham Pilihan Hari Ini

Kode	Hrg	Support	Resistant	Rek.	Alasan		
Shm	02/7	I	II	I	II		
ASII	23.250	22.850	22.450	23.650	24.050	BuyOW	Berpeluang gerak pada kisaran 20.400 - 22.900.
LSIP	5.850	5.650	5.450	6.050	6.250	BuyOW	Berpeluang gerak pada kisaran 4.350 - 5.400.
ANTM	2.075	1.975	1.875	2.175	2.275	TrdSell	Berpeluang gerak pada kisaran 2.025 - 2.150.
BUMI	1.840	1.800	1.760	1.880	1.920	TrdSell	Berpeluang gerak pada kisaran 1.800 - 1.900.
UNVR	10.000	9.800	9.600	10.200	10.400	SellOS	Waspadaai celah harga 9.700

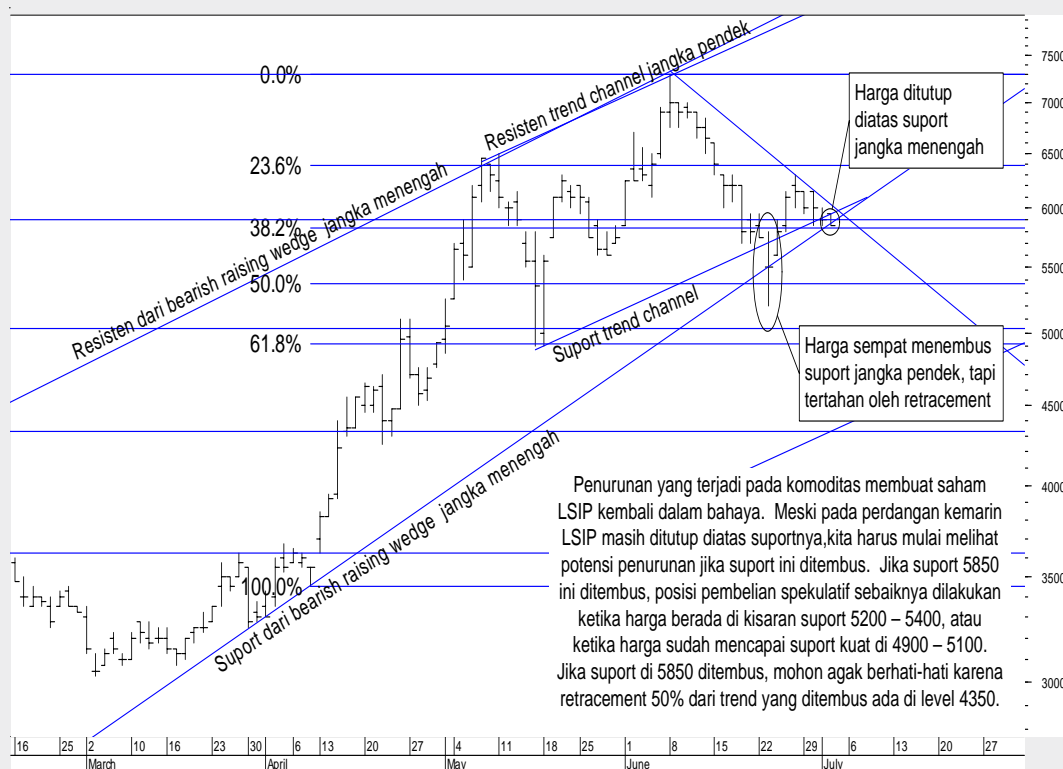
ASII : BuyOW

Last Price : 23.250



LSIP : BuyOW

Last Price : 5.850



RESEARCH TEAM

Arhya Satyagraha
Deputy Head of Research
(arhya@trimegah.com)

Stanley Tjiandra
Equity Analyst
(stanley@trimegah.com)

Steve Matuari
Equity Analyst
(steve.matuari@trimegah.com)

Reny Eka Putri
Quantitative Analyst
(reny.putri@trimegah.com)

Rovandi
Research Assistant
(rovandi@trimegah.com)

Novia Valencia
Equity Analyst
(novia.valencia@trimegah.com)

T. Hedy Arifien
Market Analyst
(hedy@trimegah.com)

EQUITY CAPITAL MARKET TEAM

Henry F. Jusuf
Head of Equities
(henry@trimegah.com)

Dedy Efian
Pluit, Jakarta
(dedy.efian@trimegah.com)

Yuliaty
Mangga Dua, Jakarta
(yuliaty@trimegah.com)

Nathanael Benny Prasetyo
Surabaya, Jawa Timur
(benny.prasetyo@trimegah.com)

Juita Buduha
Makasar, Sulawesi Selatan
(juita.buduha@trimegah.com)

Windra Djulnaily
Palembang, Sumatra Selatan
(windra.djulnaily@trimegah.com)

Ferry Zabur
Kelapa Gading, Jakarta
(ferry.zabur@trimegah.com)

Wirjawan Joesoef
Kebon Jeruk, Jakarta
(iwan@trimegah.com)

Rusdy
Medan, Sumatera Utara
(rusdy@trimegah.com)

Edwin Jayandaru
Malang, Jawa Timur
(edwin.jayandaru@trimegah.com)

Tantie Rivi Watie
Pekanbaru, Riau
(tantierw@trimegah.com)

Edy Susanto
Artha Graha, Jakarta
(edy.susanto@trimegah.com)

Tutik Suciati
Semarang, Jawa Tengah
(tuty.s@trimegah.com)

Niluh Ketut Sri Agustini
Denpasar, Bali
(sri.agustini@trimegah.com)

Asep Saepudin
Bandung, Jawa Barat
(asep.saepudin@trimegah.com)

Andreas Dewanto
Solo, Jawa Tengah
(andreas.dewanto@trimegah.com)

PT Trimegah Securities Tbk
19th Fl, Artha Graha Building
Jl. Jend. Sudirman Kav. 52-53
Jakarta 12190, INDONESIA
Tel : (6221) 515 2727 Fax : (6221) 515 4580

DISCLAIMER

This report has been prepared by PT Trimegah Securities Tbk on behalf of itself and its affiliated companies and is provided for information purposes only. Under no circumstances is it to be used or considered as an offer to sell, or a solicitation of any offer to buy. This report has been produced independently and the forecasts, opinions and expectations contained herein are entirely those of Trimegah Securities.

While all reasonable care has been taken to ensure that information contained herein is not untrue or misleading at the time of publication, Trimegah Securities makes no representation as to its accuracy or completeness and it should not be relied upon as such. This report is provided solely for the information of clients of Trimegah Securities who are expected to make their own investment decisions without reliance on this report. Neither Trimegah Securities nor any officer or employee of Trimegah Securities accept any liability whatsoever for any direct or consequential loss arising from any use of this report or its contents. Trimegah Securities and/or persons connected with it may have acted upon or used the information herein contained, or the research or analysis on which it is based, before publication. Trimegah Securities may in future participate in an offering of the company's equity securities.