

BEI 2.059,9

Change :	1,63%
Transaction Volume (m) :	6.043,3
Transaction Value (Rpbn) :	5.950,7
Mkt Cap (Rptr) :	1.617,7
Market P/E (x) :	12,9
Market Div. Yield (%) :	3,4

Global Indices		Chg	(%)
Dow Jones	8.504,1	57,1	0,7
Nasdaq	1.845,7	10,7	0,6
Nikkei	9.939,9	-18,5	-0,2
ST Times	2.352,6	19,4	0,8
FTSE	4.340,7	91,5	2,2
Hang Seng	18.378,7	0,0	0,0

Dual Listing (NYSE)		Chg	(%)
ISAT	24,3 4.966,3	-0,2	-0,6%
TLKM	31,7 8.101,7	1,7	5,7%

Commodity Price		Chg	(%)
Crude OIL (NYMEX)	69,3	-0,6	-0,8%
Gold (LME Spot)	941,3	13,9	1,5%
Nickel (LME 3M)	16.495	1.120	7,3%
Tins (LME 3M)	14.500	350	2,5%
CPO (Rotterdam CIF)	663	0,0	0,0%
Rubber (Tokyo 1M)	1.603	-20,4	-1,3%
Coal (Weekly 26/6)	68,7	0,0	0,0%

Market Movers		Chg	(%)
TLKM	7.900	400	5,1%
UNVR	9.700	450	4,6%
PGAS	3.250	100	3,1%
BBRI	6.450	150	2,3%
BBCA	3.600	75	2,1%
BDMN	4.775	-50	-1,0%
GGRM	12.350	-200	-1,6%
INTP	7.550	-200	-2,6%
DOID	920	-40	-4,3%
MEGA	2.025	-525	-25,9%

Kurs			
BI Rate	-		7,00%
US\$	-	IDR	10.223,00
Yen	-	IDR	105,77
SGD	-	IDR	7.079,64
EUR	-	IDR	14.457,37

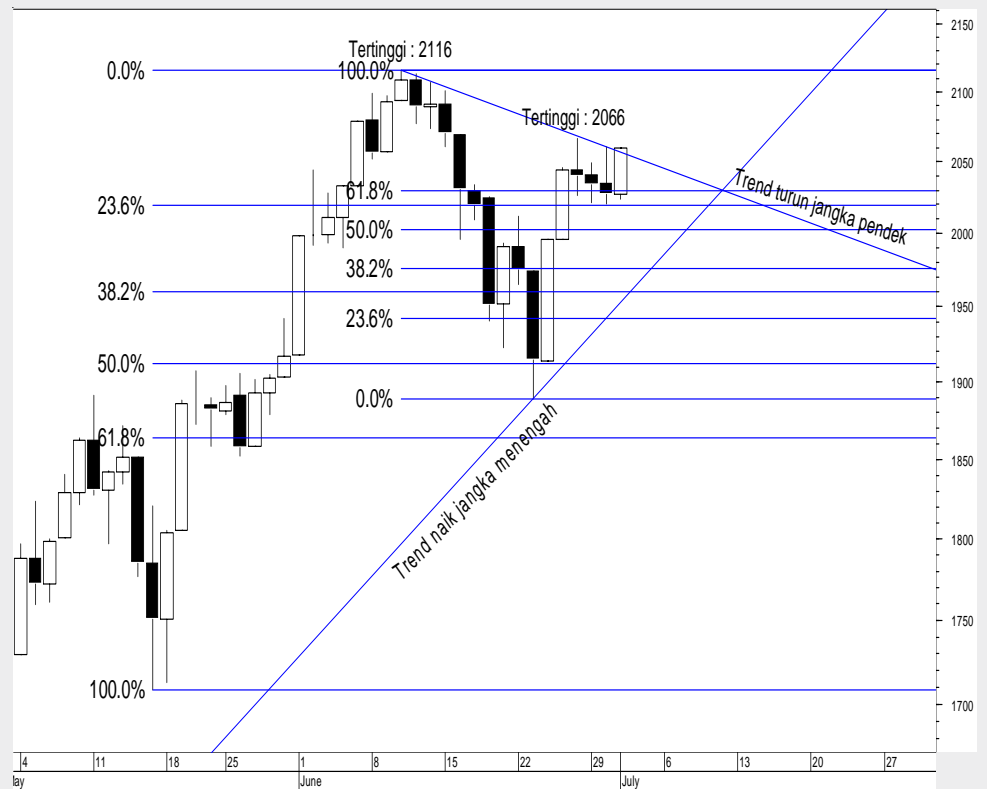
Corporate Action

ISAT	Cum Deviden	02-Jul-09
INDF	Cum Deviden	02-Jul-09
AKPI	Cum Deviden	02-Jul-09
ASRI	Cum Deviden	03-Jul-09
BLTA	Cum Deviden	07-Jul-09

Ulasan Pasar

Kondisi bursa regional Asia yang cenderung bergerak flat-naik pada pagi hari ini akan mengantarkan IHSG untuk menguji resisten di 2.060 - 2.066. Dilihat dari pergerakan flat IHSG di kisaran 2.020 - 2.060 pada beberapa hari terakhir, penembusan atas resisten ini akan membuka potensi kenaikan hingga kisaran 2.100 - 2.116. Disisi lain, level 2.020 tetap menjadi suport untuk hari ini. Posisi spekulatif bisa dilakukan ketika IHSG mendekati suport ini, dengan resiko jika suport ini ditembus, maka akan terbuka potensi pelemahan menuju kisaran 1.970 - 1.980. Bagaimana peluang penembusan atas resisten 2.060 - 2.066? Agak berat juga. Resisten ini hanya bisa tembus jika terjadi pergerakan 'luar biasa' pada saham-saham perbankan mengingat saham TLKM yang menjadi penggerak IHSG kemarin, sudah mendekati resisten kuatnya.

Chart : BEI



Saham Pilihan Hari Ini

Kode	Hrg	Support		Resistant		Rek.	Alasan
		I	II	I	II		
Shm	01/7						
TLKM	7,900	7,700	7,500	8,100	8,300	SellOS	Berpeluang gerak pada kisaran 8.000 - 8.100.
BMTR	365	345	325	385	405	SpBuy	Berpeluang gerak pada kisaran 330 - 450.
PGAS	3,250	3,050	2,850	3,450	3,650	TrdSell	Berpeluang gerak pada kisaran 3.150 - 3.350.
BBRI	6,450	6,250	6,050	6,650	6,850	SpBuy	Berpeluang gerak pada kisaran 6.400 - 6.500.
INKP	1,860	1,820	1,780	1,900	1,940	TrdBuy	Berpeluang gerak pada kisaran 1.850 - 1.950.

TLKM

Last Price : 7.900



BMTR

Last Price : 365



RESEARCH TEAM

Arhya Satyagraha

Deputy Head of Research
(arhya@trimegah.com)

Stanley Tjiandra

Equity Analyst
(stanley@trimegah.com)

Steve Matuari

Equity Analyst
(steve.matuari@trimegah.com)

Reny Eka Putri

Quantitative Analyst
(reny.putri@trimegah.com)

Rovandi

Research Assistant
(rovandi@trimegah.com)

Novia Valencia

Equity Analyst
(novia.valencia@trimegah.com)

T. Hedy Arifien

Market Analyst
(hedy@trimegah.com)

EQUITY CAPITAL MARKET TEAM

Henry F. Jusuf

Head of Equities
(henry@trimegah.com)

Dedy Efian

Pluit, Jakarta
(dedy.efian@trimegah.com)

Ferry Zabur

Kelapa Gading, Jakarta
(ferry.zabur@trimegah.com)

Edy Susanto

Artha Graha, Jakarta
(edy.susanto@trimegah.com)

Yuliaty

Mangga Dua, Jakarta
(yuliaty@trimegah.com)

Wirjawan Joesoef

Kebon Jeruk, Jakarta
(iwan@trimegah.com)

Tutik Suciati

Semarang, Jawa Tengah
(tuty.s@trimegah.com)

Nathanael Benny Prasetyo

Surabaya, Jawa Timur
(benny.prasetyo@trimegah.com)

Rusdy

Medan, Sumatera Utara
(rusdy@trimegah.com)

Niluh Ketut Sri Agustini

Denpasar, Bali
(sri.agustini@trimegah.com)

Juita Buduha

Makasar, Sulawesi Selatan
(juita.buduha@trimegah.com)

Edwin Jayandaru

Malang, Jawa Timur
(edwin.jayandaru@trimegah.com)

Asep Saepudin

Bandung, Jawa Barat
(asep.saepudin@trimegah.com)

Windra Djulnaily

Palembang, Sumatra Selatan
(windra.djulnaily@trimegah.com)

Tantie Rivi Watie

Pekanbaru, Riau
(tantierw@trimegah.com)

Andreas Dewanto

Solo, Jawa Tengah
(andreas.dewanto@trimegah.com)

PT Trimegah Securities Tbk

19th Fl, Artha Graha Building
Jl. Jend. Sudirman Kav. 52-53
Jakarta 12190, INDONESIA

Tel : (6221) 515 2727 Fax : (6221) 515 4580

DISCLAIMER

This report has been prepared by PT Trimegah Securities Tbk on behalf of itself and its affiliated companies and is provided for information purposes only. Under no circumstances is it to be used or considered as an offer to sell, or a solicitation of any offer to buy. This report has been produced independently and the forecasts, opinions and expectations contained herein are entirely those of Trimegah Securities.

While all reasonable care has been taken to ensure that information contained herein is not untrue or misleading at the time of publication, Trimegah Securities makes no representation as to its accuracy or completeness and it should not be relied upon as such. This report is provided solely for the information of clients of Trimegah Securities who are expected to make their own investment decisions without reliance on this report. Neither Trimegah Securities nor any officer or employee of Trimegah Securities accept any liability whatsoever for any direct or consequential loss arising from any use of this report or its contents. Trimegah Securities and/or persons connected with it may have acted upon or used the information herein contained, or the research or analysis on which it is based, before publication. Trimegah Securities may in future participate in an offering of the company's equity securities.